

Product datasheet

Anti-West Nile Virus M glycoprotein antibody ab22070

★★★★★ [3 Abreviews](#) [6 References](#) [2 Images](#)

Overview

Product name	Anti-West Nile Virus M glycoprotein antibody
Description	Rabbit polyclonal to West Nile Virus M glycoprotein
Host species	Rabbit
Tested applications	Suitable for: IHC-P, WB
Species reactivity	Reacts with: West Nile virus
Immunogen	Synthetic peptide corresponding to West Nile Virus M glycoprotein aa 8-27. Sequence: GESTLANKKGAWLDSTKATR

 [Run BLAST with](#)

 [Run BLAST with](#)

General notes

The Life Science industry has been in the grips of a reproducibility crisis for a number of years. Abcam is leading the way in addressing this with our range of recombinant monoclonal antibodies and knockout edited cell lines for gold-standard validation. Please check that this product meets your needs before purchasing.

If you have any questions, special requirements or concerns, please send us an inquiry and/or contact our Support team ahead of purchase. Recommended alternatives for this product can be found below, along with publications, customer reviews and Q&As

Properties

Form	Liquid
Storage instructions	Shipped at 4°C. Upon delivery aliquot and store at -20°C. Avoid freeze / thaw cycles.
Storage buffer	Preservative: 0.02% Sodium azide Constituent: PBS
Purity	Protein G purified
Clonality	Polyclonal
Isotype	IgG

Applications

The Abpromise guarantee Our [Abpromise guarantee](#) covers the use of ab22070 in the following tested applications.

The application notes include recommended starting dilutions; optimal dilutions/concentrations should be determined by the end user.

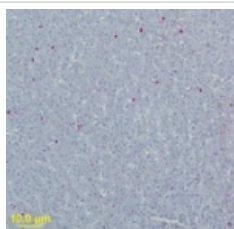
Application	Abreviews	Notes
IHC-P	★★★★★ (2)	Use a concentration of 1 µg/ml.
WB	★★★★★ (1)	Use a concentration of 0.5 - 2 µg/ml. Detects a band of approximately 8 kDa.

Target

Relevance

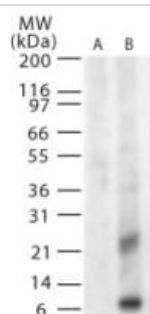
West Nile (WN), the most widespread among flaviviruses, was first isolated from the serum of a febrile woman in 1937 in the West Nile district of Uganda. West Nile virus was first detected in North America in 1999 and has subsequently spread throughout the United States and Canada and into Mexico and the Caribbean. In Africa, southern Europe, western Asia, and the United States, WNV has been isolated from mosquitoes of more than 40 species. In the United States, Canada, and Israel, WNV is responsible for significant avian mortality.

Images



Immunohistochemistry (Formalin/PFA-fixed paraffin-embedded sections) - Anti-West Nile Virus M glycoprotein antibody (ab22070)

IHC analysis of WNV-Envelope protein in bird liver using ab22070 at 1ug/ ml incubated for 30 minutes. A secondary conjugated to biotin was applied followed with streptavidin-AKP. The substrate was Fast Red chromagen. Image courtesy of Angela Ellis, University of Georgia College of Veterinary Medicine



Western blot - Anti-West Nile Virus M glycoprotein antibody (ab22070)

Western blot analysis of West Nile Virus glycoprotein M in (A) untransfected and (B) transfected cells using ab22070 at 1 ug/ml.
Western blot analysis of West Nile Virus glycoprotein M in (A) untransfected and (B) transfected cells using ab22070 at 1 ug/ml.

Please note: All products are "FOR RESEARCH USE ONLY. NOT FOR USE IN DIAGNOSTIC PROCEDURES"

Our Abpromise to you: Quality guaranteed and expert technical support

- Replacement or refund for products not performing as stated on the datasheet
- Valid for 12 months from date of delivery
- Response to your inquiry within 24 hours

- We provide support in Chinese, English, French, German, Japanese and Spanish
- Extensive multi-media technical resources to help you
- We investigate all quality concerns to ensure our products perform to the highest standards

If the product does not perform as described on this datasheet, we will offer a refund or replacement. For full details of the Abpromise, please visit <https://www.abcam.com/abpromise> or contact our technical team.

Terms and conditions

- Guarantee only valid for products bought direct from Abcam or one of our authorized distributors