

Anti-WHAMM antibody ab122572

[2 References](#) [5 Images](#)

Overview

Product name	Anti-WHAMM antibody
Description	Rabbit polyclonal to WHAMM
Host species	Rabbit
Tested applications	Suitable for: IHC-P, WB, ICC
Species reactivity	Reacts with: Human
Immunogen	antigen sequence: RALSSSSQAA THQNLGFRAP VKDDQPRPLV CESPAPERPD SLESFSCPGS MDEVLASLRH GRAPLRKVEV PAVRPPHASI NEHILAAIR, corresponding to internal sequence amino acids 660-748 of Human WHAMM. Run BLAST with Expasy Run BLAST with NCBI
Positive control	IHC-P: Human endometrium, placenta, and lymph node tissues; ICC: A431 cells; WB: U-138 MG cell lysate.
General notes	<p>The Life Science industry has been in the grips of a reproducibility crisis for a number of years. Abcam is leading the way in addressing this with our range of recombinant monoclonal antibodies and knockout edited cell lines for gold-standard validation. Please check that this product meets your needs before purchasing.</p> <p>If you have any questions, special requirements or concerns, please send us an inquiry and/or contact our Support team ahead of purchase. Recommended alternatives for this product can be found below, along with publications, customer reviews and Q&As</p>

Properties

Form	Liquid
Storage instructions	Shipped at 4°C. Store at -20°C or -80°C. Avoid freeze / thaw cycle. Store undiluted.
Storage buffer	pH: 7.20 Preservative: 0.02% Sodium azide Constituents: 59% PBS, 40% Glycerol (glycerin, glycerine)
Purity	Immunogen affinity purified
Clonality	Polyclonal
Isotype	IgG

Applications

The Abpromise guarantee

Our **Abpromise guarantee** covers the use of ab122572 in the following tested applications.

The application notes include recommended starting dilutions; optimal dilutions/concentrations should be determined by the end user.

Application	Abreviews	Notes
IHC-P		1/200 - 1/500. Perform heat mediated antigen retrieval with citrate buffer pH 6 before commencing with IHC staining protocol.
WB		Use a concentration of 0.04 - 0.4 µg/ml.
ICC		Use a concentration of 0.25 - 2 µg/ml.

Target

Function

Acts as a nucleation-promoting factor (NPF) that stimulates Arp2/3-mediated actin polymerization both at the Golgi apparatus and along tubular membranes. Involved as a regulator of Golgi positioning and morphology. Participates in vesicle transport between the reticulum endoplasmic and the Golgi complex.

Tissue specificity

Expressed in brain, lung, heart, colon and kidney (at protein level).

Sequence similarities

Contains 2 WH2 domains.

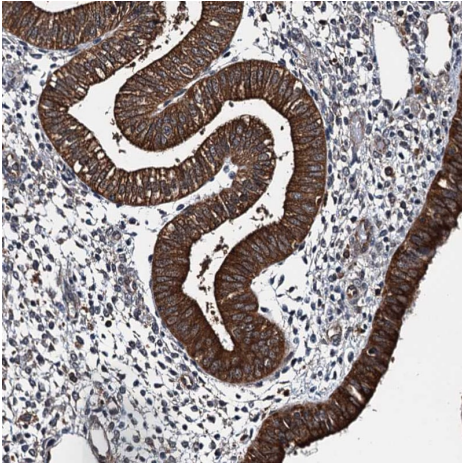
Domain

The N-terminal region associates with membranes, the coiled-coil region binds to microtubules and the WH2 domains promotes actin nucleation.

Cellular localization

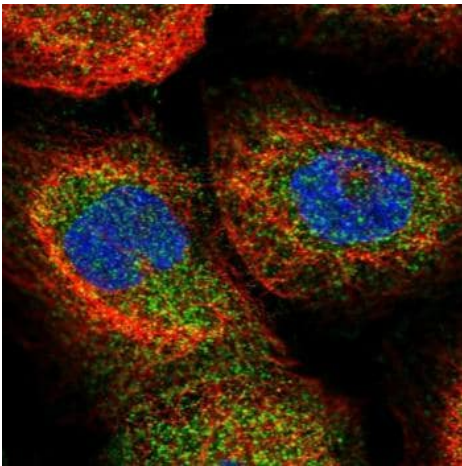
Cytoplasm. Endoplasmic reticulum-Golgi intermediate compartment. Cytoplasmic vesicle membrane. Golgi apparatus > cis-Golgi network. Localized to a perinuclear compartment near the microtubule-organizing center (MTOC). Also detected on tubulo-vesicular structures in the cell periphery that frequently localized along microtubules.

Images



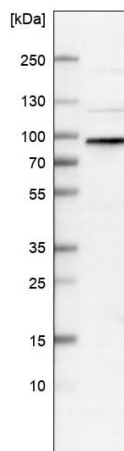
Immunohistochemistry (Formalin/PFA-fixed paraffin-embedded sections) - Anti-WHAMM antibody (ab122572)

Immunohistochemistry (Formalin/PFA-fixed paraffin-embedded sections) analysis of human endometrium tissue labelling WHAMM with ab122572 at 1/200 dilution. Heat mediated antigen retrieval performed with citrate buffer pH 6 before commencing with IHC staining protocol.



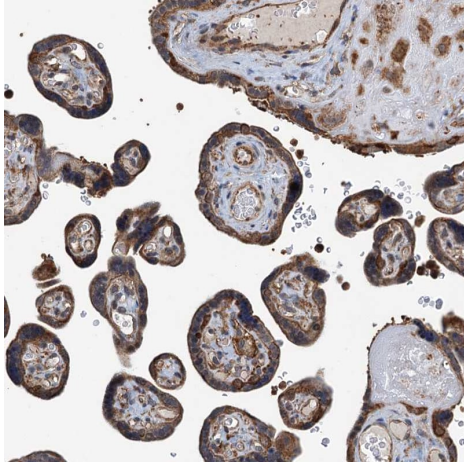
Immunocytochemistry - Anti-WHAMM antibody (ab122572)

ab122572, at 4 µg/ml, staining WHAMM in PFA/Triton X-100 fixed/permeabilized A431 cells by Immunofluorescence (green).



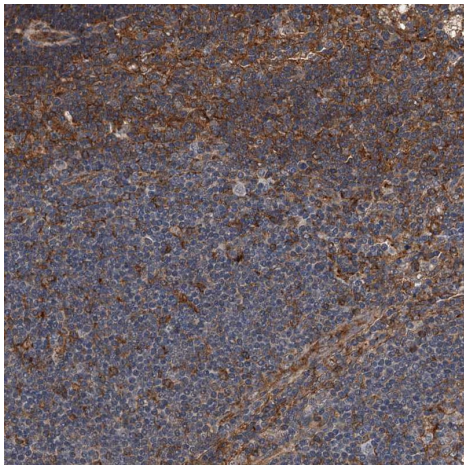
Western blot - Anti-WHAMM antibody (ab122572)

Anti-WHAMM antibody (ab122572) at 0.4 µg/ml + U-138 MG (human brain glioblastoma cell line) cell lysate



Immunohistochemistry (Formalin/PFA-fixed paraffin-embedded sections) - Anti-WHAMM antibody (ab122572)

Immunohistochemistry (Formalin/PFA-fixed paraffin-embedded sections) analysis of human placenta tissue labelling WHAMM with ab122572 at 1/200 dilution. Heat mediated antigen retrieval performed with citrate buffer pH 6 before commencing with IHC staining protocol.



Immunohistochemistry (Formalin/PFA-fixed paraffin-embedded sections) - Anti-WHAMM antibody (ab122572)

Immunohistochemistry (Formalin/PFA-fixed paraffin-embedded sections) analysis of human lymph node tissue labelling WHAMM with ab122572 at 1/200 dilution. Heat mediated antigen retrieval performed with citrate buffer pH 6 before commencing with IHC staining protocol.

Please note: All products are "FOR RESEARCH USE ONLY. NOT FOR USE IN DIAGNOSTIC PROCEDURES"

Our Abpromise to you: Quality guaranteed and expert technical support

- Replacement or refund for products not performing as stated on the datasheet
- Valid for 12 months from date of delivery
- Response to your inquiry within 24 hours
- We provide support in Chinese, English, French, German, Japanese and Spanish
- Extensive multi-media technical resources to help you
- We investigate all quality concerns to ensure our products perform to the highest standards

If the product does not perform as described on this datasheet, we will offer a refund or replacement. For full details of the Abpromise,

please visit <https://www.abcam.com/abpromise> or contact our technical team.

Terms and conditions

- Guarantee only valid for products bought direct from Abcam or one of our authorized distributors