


## Product datasheet

# Anti-WHSC2/NELF-A antibody ab85852

[2 References](#) [3 Images](#)

### Overview

---

<b>Product name</b>	Anti-WHSC2/NELF-A antibody
<b>Description</b>	Rabbit polyclonal to WHSC2/NELF-A
<b>Host species</b>	Rabbit
<b>Tested applications</b>	<b>Suitable for:</b> WB, IP, IHC-P
<b>Species reactivity</b>	<b>Reacts with:</b> Human <b>Predicted to work with:</b> Mouse 
<b>Immunogen</b>	Synthetic peptide within Human WHSC2/NELF-A aa 499-549. The exact sequence is proprietary. Database link: <a href="#">Q9H3P2</a>
<b>Positive control</b>	WB: HeLa whole cell lysate. IP: HeLa whole cell lysate. IHC-P: Human Placenta tissue.
<b>General notes</b>	<p>The Life Science industry has been in the grips of a reproducibility crisis for a number of years. Abcam is leading the way in addressing this with our range of recombinant monoclonal antibodies and knockout edited cell lines for gold-standard validation. Please check that this product meets your needs before purchasing.</p> <p>If you have any questions, special requirements or concerns, please send us an inquiry and/or contact our Support team ahead of purchase. Recommended alternatives for this product can be found below, along with publications, customer reviews and Q&amp;As</p>

### Properties

---

<b>Form</b>	Liquid
<b>Storage instructions</b>	Shipped at 4°C. Store at +4°C short term (1-2 weeks). Upon delivery aliquot. Store at -20°C long term. Avoid freeze / thaw cycle.
<b>Storage buffer</b>	pH: 7 Preservative: 0.09% Sodium azide Constituent: Tris citrate/phosphate
<b>Purity</b>	Immunogen affinity purified
<b>Purification notes</b>	ab85852 was affinity purified using an epitope specific to WHSC2/NELF-A immobilized on solid support.
<b>Clonality</b>	Polyclonal
<b>Isotype</b>	IgG

## Applications

### The Abpromise guarantee

Our **Abpromise guarantee** covers the use of ab85852 in the following tested applications.

The application notes include recommended starting dilutions; optimal dilutions/concentrations should be determined by the end user.

Application	Abreviews	Notes
WB		1/2000 - 1/10000. Predicted molecular weight: 60 kDa.
IP		Use at 2-5 µg/mg of lysate.
IHC-P		1/500 - 1/2000. Perform heat mediated antigen retrieval with citrate buffer pH 6 before commencing with IHC staining protocol.

## Target

### Function

Essential component of the NELF complex, a complex that negatively regulates the elongation of transcription by RNA polymerase II. The NELF complex, which acts via an association with the DSIF complex and causes transcriptional pausing, is counteracted by the P-TEFb kinase complex. Probably required to interact with the RNA polymerase II complex.

### Tissue specificity

Ubiquitous. Expressed in heart, brain, placenta, liver, skeletal muscle, kidney and pancreas. Expressed at lower level in adult lung. Expressed in fetal brain, lung, liver and kidney.

### Sequence similarities

Belongs to the NELF-A family.  
Contains 1 HDAg-like domain.

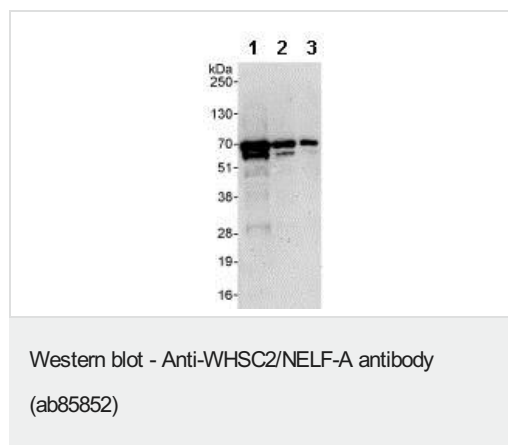
### Domain

The HDAg-like domain is essential for transcriptional repression, and mediates the interaction with the RNA polymerase II complex.

### Cellular localization

Nucleus.

## Images



**All lanes :** Anti-WHSC2/NELF-A antibody (ab85852) at 0.1 µg/ml

**Lane 1 :** HeLa (human epithelial cell line from cervix adenocarcinoma) whole cell lysate at 50 µg

**Lane 2 :** HeLa whole cell lysate at 15 µg

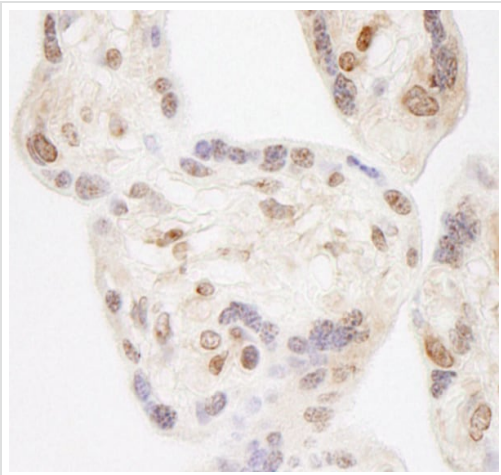
**Lane 3 :** HeLa whole cell lysate at 5 µg

Developed using the ECL technique.

**Predicted band size:** 60 kDa

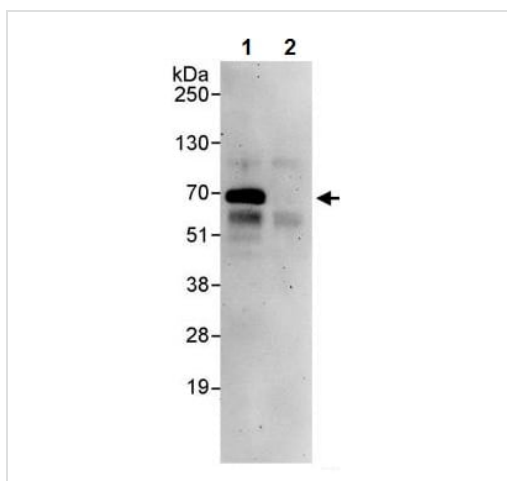
**Observed band size:** 60 kDa

**Exposure time:** 3 minutes



Immunohistochemistry (Formalin/PFA-fixed paraffin-embedded sections) - Anti-WHSC2/NELF-A antibody (ab85852)

Immunohistochemistry (Formalin/PFA-fixed paraffin-embedded sections) analysis of human placenta tissue labelling WHSC2 with ab85852 at 1/1000 (1µg/ml). Detection: DAB.



Immunoprecipitation - Anti-WHSC2/NELF-A antibody (ab85852)

WHSC2/NELF-A was immunoprecipitated from HeLa (human epithelial cell line from cervix adenocarcinoma) whole cell lysate (1 mg/IP; 20% of IP loaded/lane) using ab85852 at 3 µg/mg lysate. Western blot was performed from the immunoprecipitate using ab85852, at 1 µg/ml.

**Lane 1:** ab85852 IP in HeLa whole cell lysate.

**Lane 2:** Control IgG.

Detection: Chemiluminescence with exposure times of 3 minutes

**Please note:** All products are "FOR RESEARCH USE ONLY. NOT FOR USE IN DIAGNOSTIC PROCEDURES"

### Our Abpromise to you: Quality guaranteed and expert technical support

- Replacement or refund for products not performing as stated on the datasheet
- Valid for 12 months from date of delivery
- Response to your inquiry within 24 hours
- We provide support in Chinese, English, French, German, Japanese and Spanish
- Extensive multi-media technical resources to help you
- We investigate all quality concerns to ensure our products perform to the highest standards

If the product does not perform as described on this datasheet, we will offer a refund or replacement. For full details of the Abpromise, please visit <https://www.abcam.com/abpromise> or contact our technical team.

## Terms and conditions

---

- Guarantee only valid for products bought direct from Abcam or one of our authorized distributors