

Product datasheet

Anti-WIPI1 antibody [EPR8110] - BSA and Azide free ab248208

Recombinant RabMAb

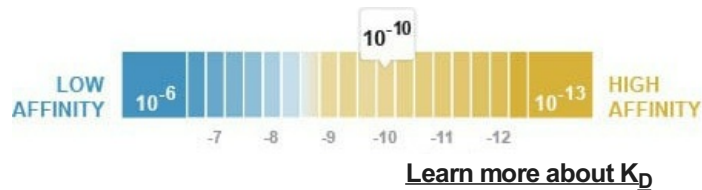
[4 Images](#)

Overview

Product name	Anti-WIPI1 antibody [EPR8110] - BSA and Azide free
Description	Rabbit monoclonal [EPR8110] to WIPI1 - BSA and Azide free
Host species	Rabbit
Tested applications	Suitable for: IHC-P, WB Unsuitable for: Flow Cyt, ICC/IF or IP
Species reactivity	Reacts with: Mouse, Rat, Human
Immunogen	Synthetic peptide. This information is proprietary to Abcam and/or its suppliers.
General notes	<p>ab248208 is the carrier-free version of ab128901.</p> <p>Our carrier-free antibodies are typically supplied in a PBS-only formulation, purified and free of BSA, sodium azide and glycerol. The carrier-free buffer and high concentration allow for increased conjugation efficiency.</p> <p>This conjugation-ready format is designed for use with fluorochromes, metal isotopes, oligonucleotides, and enzymes, which makes them ideal for antibody labelling, functional and cell-based assays, flow-based assays (e.g. mass cytometry) and Multiplex Imaging applications.</p> <p>Use our conjugation kits for antibody conjugates that are ready-to-use in as little as 20 minutes with <1 minute hands-on-time and 100% antibody recovery: available for fluorescent dyes, HRP, biotin and gold.</p> <p>This product is compatible with the Maxpar[®] Antibody Labeling Kit from Fluidigm, without the need for antibody preparation. Maxpar[®] is a trademark of Fluidigm Canada Inc.</p> <p>This product is a recombinant monoclonal antibody, which offers several advantages including:</p> <ul style="list-style-type: none">- High batch-to-batch consistency and reproducibility- Improved sensitivity and specificity- Long-term security of supply- Animal-free production <p>For more information see here.</p> <p>Our RabMAb[®] technology is a patented hybridoma-based technology for making rabbit monoclonal antibodies. For details on our patents, please refer to RabMAb[®] patents.</p>

Properties

Form	Liquid
Storage instructions	Shipped at 4°C. Store at +4°C. Do Not Freeze.
Dissociation constant (K_D)	K _D = 1.14 x 10 ⁻¹⁰ M



Storage buffer	pH: 7.2 Constituent: PBS
Carrier free	Yes
Purity	Protein A purified
Clonality	Monoclonal
Clone number	EPR8110
Isotype	IgG

Applications

The Abpromise guarantee Our **Abpromise guarantee** covers the use of ab248208 in the following tested applications. The application notes include recommended starting dilutions; optimal dilutions/concentrations should be determined by the end user.

Application	Abreviews	Notes
IHC-P		Use at an assay dependent concentration. Perform heat mediated antigen retrieval before commencing with IHC staining protocol.
WB		Use at an assay dependent concentration. Detects a band of approximately 49 kDa (predicted molecular weight: 49 kDa).

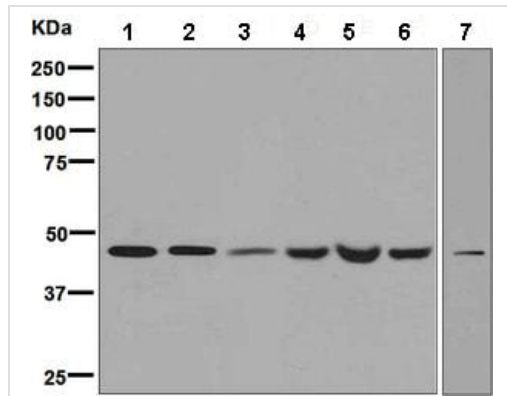
Application notes Is unsuitable for Flow Cyt, ICC/IF or IP.

Target

Function	May play a role in autophagy. May regulate the trafficking of proteins involved in the mannose-6-phosphate receptor (MPR) recycling pathway.
Tissue specificity	Ubiquitously expressed. Highly expressed in skeletal muscle, heart, testis, pancreas and placenta. Highly expressed in G361, Sk-mel-28, Sk-mel-13, WM852 and WM451 cells. Up-regulated in a variety of tumor tissues.
Sequence similarities	Belongs to the WD repeat SVP1 family. Contains 3 WD repeats.
Cellular localization	Golgi apparatus > trans-Golgi network. Endosome. Cytoplasmic vesicle > clathrin-coated vesicle. Trans elements of the Golgi and peripheral endosomes. Dynamically cycles through these compartments and is susceptible to conditions that modulate membrane flux. Enriched in clathrin-

coated vesicles.

Images



Western blot - Anti-WIP1 antibody [EPR8110] - BSA and Azide free (ab248208)

All lanes : Anti-WIP1 antibody [EPR8110] ([ab128901](#)) at 1/1000 dilution

Lane 1 : A375 cell lysate

Lane 2 : BxPC-3 cell lysate

Lane 3 : 293T (Human embryonic kidney epithelial cell) cell lysate

Lane 4 : C6 cell lysate

Lane 5 : RAW 264.7 cell lysate

Lane 6 : NIH/3T3 cell lysate

Lane 7 : JAR cell lysate

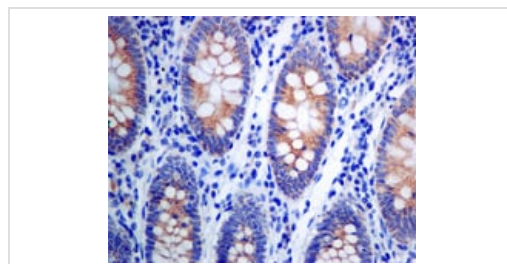
Lysates/proteins at 10 µg per lane.

Secondary

All lanes : Goat anti-Rabbit HRP at 1/2000 dilution

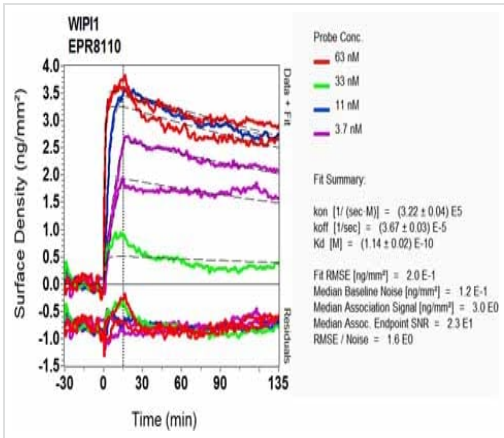
Predicted band size: 49 kDa

This data was developed using [ab128901](#), the same antibody clone in a different buffer formulation.



Immunohistochemistry (Formalin/PFA-fixed paraffin-embedded sections) - Anti-WIP1 antibody [EPR8110] - BSA and Azide free (ab248208)

This data was developed using [ab128901](#), the same antibody clone in a different buffer formulation. [ab128901](#) at 1/50 dilution staining WIP1 in Paraffin-embedded Human colon tissue by Immunohistochemistry. Perform heat mediated antigen retrieval before commencing with IHC staining protocol.



OI-RD Scanning - Anti-WIP1 antibody [EPR8110] - BSA and Azide free (ab248208)

This data was developed using [ab128901](#), the same antibody clone in a different buffer formulation. Equilibrium dissociation constant (K_D)

Learn more about K_D

[Click here to learn more about \$K_D\$](#)

Why choose a recombinant antibody?

Research with confidence
Consistent and reproducible results

Long-term and scalable supply
Recombinant technology

Success from the first experiment
Confirmed specificity

Ethical standards compliant
Animal-free production

Anti-WIP1 antibody [EPR8110] - BSA and Azide free (ab248208)

Please note: All products are "FOR RESEARCH USE ONLY. NOT FOR USE IN DIAGNOSTIC PROCEDURES"

Our Promise to you: Quality guaranteed and expert technical support

- Replacement or refund for products not performing as stated on the datasheet
- Valid for 12 months from date of delivery
- Response to your inquiry within 24 hours
- We provide support in Chinese, English, French, German, Japanese and Spanish
- Extensive multi-media technical resources to help you

- We investigate all quality concerns to ensure our products perform to the highest standards

If the product does not perform as described on this datasheet, we will offer a refund or replacement. For full details of the Abpromise, please visit <https://www.abcam.com/abpromise> or contact our technical team.

Terms and conditions

- Guarantee only valid for products bought direct from Abcam or one of our authorized distributors