




Product datasheet

Anti-WNK1 antibody ab233266

3 Images

Overview

Product name	Anti-WNK1 antibody
Description	Rabbit polyclonal to WNK1
Host species	Rabbit
Tested applications	Suitable for: WB, IHC-P
Species reactivity	Reacts with: Human, Pig Predicted to work with: Mouse 
Immunogen	Recombinant fragment (His-T7-tag) corresponding to Human WNK1 aa 1950-2250. Expressed in E. coli. N-terminal tags. Database link: Q9H4A3 <div>  Run BLAST with  Run BLAST with </div>
Positive control	WB: Recombinant human WNK1 protein. HEK-293T cell lysate. Pig liver and kidney tissue lysate. IHC-P: Human testis tissue.
General notes	<p>The Life Science industry has been in the grips of a reproducibility crisis for a number of years. Abcam is leading the way in addressing this with our range of recombinant monoclonal antibodies and knockout edited cell lines for gold-standard validation. Please check that this product meets your needs before purchasing.</p> <p>If you have any questions, special requirements or concerns, please send us an inquiry and/or contact our Support team ahead of purchase. Recommended alternatives for this product can be found below, along with publications, customer reviews and Q&As</p>

Properties

Form	Liquid
Storage instructions	Shipped at 4°C. Store at +4°C short term (1-2 weeks). Upon delivery aliquot. Store at -20°C long term. Avoid freeze / thaw cycle.
Storage buffer	pH: 7.40 Preservative: 0.02% Sodium azide Constituents: 44.12% PBS, 55.77% Glycerol (glycerin, glycerine)
Purity	Protein A purified
Purification notes	Antigen-specific affinity chromatography followed by Protein A affinity chromatography.
Clonality	Polyclonal

Isotype IgG

Applications

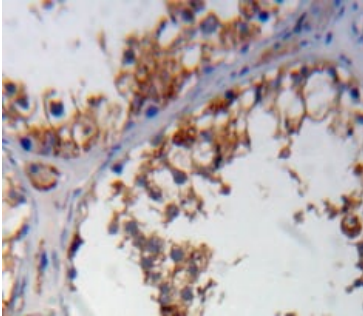
The Abpromise guarantee Our **Abpromise guarantee** covers the use of ab233266 in the following tested applications. The application notes include recommended starting dilutions; optimal dilutions/concentrations should be determined by the end user.

Application	Abreviews	Notes
WB		Use a concentration of 1 - 5 µg/ml.
IHC-P		Use a concentration of 5 - 20 µg/ml.

Target

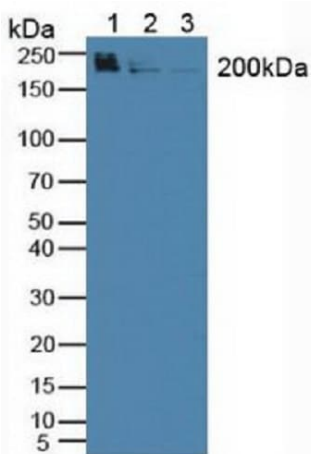
Function	Serine/threonine kinase which plays an important role in the regulation of electrolyte homeostasis, cell signaling, survival, and proliferation. Acts as an activator and inhibitor of sodium-coupled chloride cotransporters and potassium-coupled chloride cotransporters respectively. Activates SCNN1A, SCNN1B, SCNN1D and SGK1. Controls sodium and chloride ion transport by inhibiting the activity of WNK4, by either phosphorylating the kinase or via an interaction between WNK4 and the autoinhibitory domain of WNK1. WNK4 regulates the activity of the thiazide-sensitive Na-Cl cotransporter, SLC12A3, by phosphorylation. WNK1 may also play a role in actin cytoskeletal reorganization. Phosphorylates NEDD4L. Acts as a scaffold to inhibit SLC4A4, SLC26A6 as well as CFTR activities and surface expression, recruits STK39 which mediates the inhibition.
Tissue specificity	Widely expressed, with highest levels observed in the testis, heart, kidney and skeletal muscle. Isoform 3 is kidney-specific and specifically expressed in the distal convoluted tubule (DCT) and connecting tubule (CNT) of the nephron.
Involvement in disease	Pseudohypoaldosteronism 2C Neuropathy, hereditary sensory and autonomic, 2A
Sequence similarities	Belongs to the protein kinase superfamily. Ser/Thr protein kinase family. WNK subfamily. Contains 1 protein kinase domain.
Post-translational modifications	O-glycosylated. Ubiquitinated in vitro by the BCR(KLHL3) complex and in vivo by a BCR(KLHL2) complex, leading to proteasomal degradation.
Cellular localization	Cytoplasm.

Images



Immunohistochemistry (Formalin/PFA-fixed paraffin-embedded sections) - Anti-WNK1 antibody (ab233266)

Formalin-fixed, paraffin-embedded human testis tissue stained for WNK1 with ab233266 at 20 µg/ml in immunohistochemical analysis. DAB staining.



Western blot - Anti-WNK1 antibody (ab233266)

All lanes : Anti-WNK1 antibody (ab233266) at 2 µg/ml

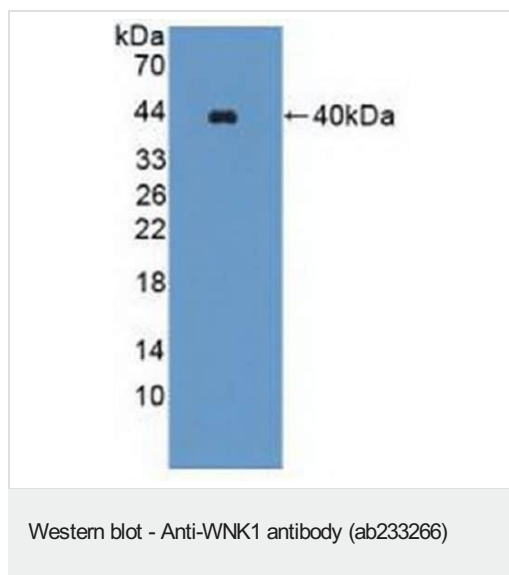
Lane 1 : HEK-293T (Human epithelial cell line from embryonic kidney transformed with large T antigen) cell lysate

Lane 2 : Pig liver tissue lysate

Lane 3 : Pig kidney tissue lysate

Secondary

All lanes : HRP-linked Guinea pig anti-Rabbit at 1/2000 dilution



Anti-WNK1 antibody (ab233266) at 2 µg/ml + Recombinant human WNK1 protein

Please note: All products are "FOR RESEARCH USE ONLY. NOT FOR USE IN DIAGNOSTIC PROCEDURES"

Our Abpromise to you: Quality guaranteed and expert technical support

- Replacement or refund for products not performing as stated on the datasheet
- Valid for 12 months from date of delivery
- Response to your inquiry within 24 hours
- We provide support in Chinese, English, French, German, Japanese and Spanish
- Extensive multi-media technical resources to help you
- We investigate all quality concerns to ensure our products perform to the highest standards

If the product does not perform as described on this datasheet, we will offer a refund or replacement. For full details of the Abpromise, please visit <https://www.abcam.com/abpromise> or contact our technical team.

Terms and conditions

- Guarantee only valid for products bought direct from Abcam or one of our authorized distributors