


Product datasheet

Anti-Wnt11 antibody ab31962

★★★★★ [8 Abreviews](#) [18 References](#) [2 Images](#)

Overview

Product name	Anti-Wnt11 antibody
Description	Rabbit polyclonal to Wnt11
Host species	Rabbit
Specificity	<p>From Jan 2024, QC testing of replenishment batches of this polyclonal changed. All tested and expected application and reactive species combinations are still covered by our Abcam product promise. However, we no longer test all applications. For more information on a specific batch, please contact our Scientific Support who will be happy to help.</p> <p>This antibody detects recombinant human Wnt11 by Western Blotting. We have been unable to detect endogenous protein in cell lines with this antibody, possibly due to the low level of endogenous protein in the samples tested.</p>
Tested applications	Suitable for: ICC/IF, WB
Species reactivity	<p>Reacts with: Human</p> <p>Predicted to work with: Mouse, Rat, Rabbit, Cow </p>
Immunogen	<p>Synthetic peptide corresponding to Human Wnt11 aa 250-350 conjugated to keyhole limpet haemocyanin.</p> <p>(Peptide available as ab28716)</p>
Positive control	This antibody gave a positive result in IF in the following formaldehyde fixed cell lines: DU145.
General notes	<p>The Life Science industry has been in the grips of a reproducibility crisis for a number of years. Abcam is leading the way in addressing this with our range of recombinant monoclonal antibodies and knockout edited cell lines for gold-standard validation. Please check that this product meets your needs before purchasing.</p> <p>If you have any questions, special requirements or concerns, please send us an inquiry and/or contact our Support team ahead of purchase. Recommended alternatives for this product can be found below, along with publications, customer reviews and Q&As</p>

Properties

Form	Liquid
Storage instructions	Shipped at 4°C. Store at +4°C short term (1-2 weeks). Upon delivery aliquot. Store at -20°C or -80°C. Avoid freeze / thaw cycle.
Storage buffer	pH: 7.40

Preservative: 0.02% Sodium azide
Constituent: PBS

Batches of this product that have a concentration < 1mg/ml may have BSA added as a stabilising agent. If you would like information about the formulation of a specific lot, please contact our scientific support team who will be happy to help.

Purity	Immunogen affinity purified
Clonality	Polyclonal
Isotype	IgG

Applications

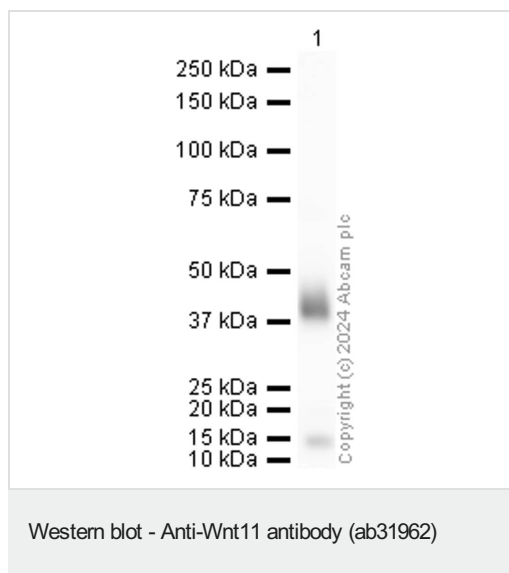
The Abpromise guarantee Our **Abpromise guarantee** covers the use of ab31962 in the following tested applications. The application notes include recommended starting dilutions; optimal dilutions/concentrations should be determined by the end user.

Application	Abreviews	Notes
ICC/IF		Use a concentration of 5 µg/ml.
WB	★★★★★ (5)	Use a concentration of 1 µg/ml. Detects a band of approximately 37 kDa (predicted molecular weight: 39 kDa).

Target

Function	Ligand for members of the frizzled family of seven transmembrane receptors. Probable developmental protein. May be a signaling molecule which affects the development of discrete regions of tissues. Is likely to signal over only few cell diameters.
Tissue specificity	Expressed in fetal lung, kidney, adult heart, liver, skeletal muscle, and pancreas.
Sequence similarities	Belongs to the Wnt family.
Post-translational modifications	Palmitoylation at Ser-215 is required for efficient binding to frizzled receptors. Palmitoylation is necessary for proper trafficking to cell surface.
Cellular localization	Secreted, extracellular space, extracellular matrix.

Images



Anti-Wnt11 antibody (ab31962) at 1 µg/ml + Human Wnt11
Recombinant Protein at 0.01 µg

Secondary

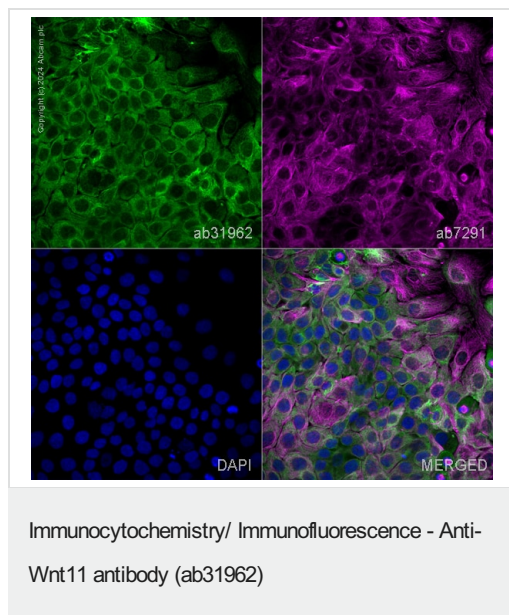
Goat polyclonal to Rabbit IgG - H&L - Pre-Adsorbed (HRP) at
1/50000 dilution

Performed under reducing conditions.

Predicted band size: 39 kDa

Observed band size: 39 kDa

Blocking Buffer: 2% BSA



ab31962 staining Wnt11 in HaCat cells. The cells were fixed with 4% paraformaldehyde (10 min), permeabilized with 0.1% PBS-Triton X-100 for 5 minutes and then blocked with 1% BSA/10% normal goat serum/0.3M glycine in 0.1% PBS-Tween for 1h. The cells were then incubated overnight at 4°C with ab31962 at 1µg/ml and **ab7291**, Mouse monoclonal [DM1A] to alpha Tubulin - Loading Control. Cells were then incubated with **ab150081**, Goat polyclonal Secondary Antibody to Rabbit IgG - H&L (Alexa Fluor® 488), pre-adsorbed at 1/1000 dilution (shown in green) and **ab150120**, Goat polyclonal Secondary Antibody to Mouse IgG - H&L (Alexa Fluor® 594), pre-adsorbed at 1/1000 dilution (shown in pseudocolour magenta). Nuclear DNA was labelled with DAPI (shown in blue). Image was acquired with a high-content analyser (Operetta CLS, Perkin Elmer) and a maximum intensity projection of confocal sections is shown.

Please note: All products are "FOR RESEARCH USE ONLY. NOT FOR USE IN DIAGNOSTIC PROCEDURES"

Our Abpromise to you: Quality guaranteed and expert technical support

- Replacement or refund for products not performing as stated on the datasheet
- Valid for 12 months from date of delivery
- Response to your inquiry within 24 hours

- We provide support in Chinese, English, French, German, Japanese and Spanish
- Extensive multi-media technical resources to help you
- We investigate all quality concerns to ensure our products perform to the highest standards

If the product does not perform as described on this datasheet, we will offer a refund or replacement. For full details of the Abpromise, please visit [**https://www.abcam.com/abpromise**](https://www.abcam.com/abpromise) or contact our technical team.

Terms and conditions

- Guarantee only valid for products bought direct from Abcam or one of our authorized distributors