


## Product datasheet

### Anti-Wnt6 antibody ab50030

★★★★★ [3 Abreviews](#) [10 References](#) [2 Images](#)

#### Overview

<b>Product name</b>	Anti-Wnt6 antibody
<b>Description</b>	Rabbit polyclonal to Wnt6
<b>Host species</b>	Rabbit
<b>Tested applications</b>	<b>Suitable for:</b> WB, ICC/IF
<b>Species reactivity</b>	<b>Reacts with:</b> Human <b>Predicted to work with:</b> Mouse 
<b>Immunogen</b>	Synthetic peptide corresponding to Human Wnt6 aa 250-350 conjugated to keyhole limpet haemocyanin. (Peptide available as <a href="#">ab50029</a> )
<b>Positive control</b>	This antibody gave a positive signal in the following whole cell lysates: HeLa (Human epithelial carcinoma cell line); Jurkat (Human T cell lymphoblast-like cell line); A431 (Human epithelial carcinoma cell line); HEK293 (Human embryonic kidney cell line); HepG2 (Human hepatocellular liver carcinoma cell line); MCF7 (Human breast adenocarcinoma cell line); SHSY-5Y (Human neuroblastoma cell line); U2OS (Human osteosarcoma cell line)
<b>General notes</b>	<p>The Life Science industry has been in the grips of a reproducibility crisis for a number of years. Abcam is leading the way in addressing this with our range of recombinant monoclonal antibodies and knockout edited cell lines for gold-standard validation. Please check that this product meets your needs before purchasing.</p> <p>If you have any questions, special requirements or concerns, please send us an inquiry and/or contact our Support team ahead of purchase. Recommended alternatives for this product can be found below, along with publications, customer reviews and Q&amp;As</p>

#### Properties

<b>Form</b>	Liquid
<b>Storage instructions</b>	Shipped at 4°C. Store at +4°C short term (1-2 weeks). Upon delivery aliquot. Store at -20°C or -80°C. Avoid freeze / thaw cycle.
<b>Storage buffer</b>	pH: 7.40 Preservative: 0.02% Sodium azide Constituent: PBS
Batches of this product that have a concentration < 1mg/ml may have BSA added as a stabilising	

agent. If you would like information about the formulation of a specific lot, please contact our scientific support team who will be happy to help.

<b>Purity</b>	Immunogen affinity purified
<b>Clonality</b>	Polyclonal
<b>Isotype</b>	IgG

## Applications

**The Abpromise guarantee** Our **Abpromise guarantee** covers the use of ab50030 in the following tested applications.

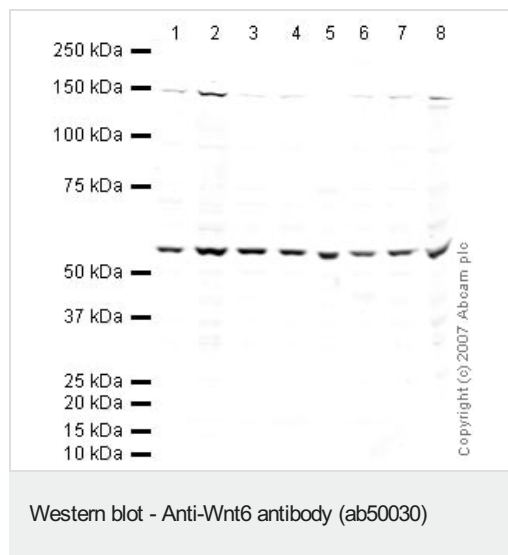
The application notes include recommended starting dilutions; optimal dilutions/concentrations should be determined by the end user.

Application	Abreviews	Notes
<b>WB</b>	★★★★★ (1)	Use a concentration of 1 µg/ml. Predicted molecular weight: 40 kDa.
<b>ICC/IF</b>		Use at an assay dependent concentration.

## Target

<b>Function</b>	Ligand for members of the frizzled family of seven transmembrane receptors. Probable developmental protein. May be a signaling molecule which affects the development of discrete regions of tissues. Is likely to signal over only few cell diameters.
<b>Sequence similarities</b>	Belongs to the Wnt family.
<b>Post-translational modifications</b>	Palmitoylation at Ser-228 is required for efficient binding to frizzled receptors. It is also required for subsequent palmitoylation at Cys-76. Palmitoylation is necessary for proper trafficking to cell surface.
<b>Cellular localization</b>	Secreted > extracellular space > extracellular matrix.

## Images



**All lanes** : Anti-Wnt6 antibody (ab50030) at 1 µg/ml

**Lane 1** : HeLa (Human epithelial carcinoma cell line) Whole Cell Lysate

**Lane 2** : Jurkat (Human T cell lymphoblast-like cell line) Whole Cell Lysate

**Lane 3** : A431 (Human epithelial carcinoma cell line) Whole Cell Lysate

**Lane 4** : HEK293 Human embryonic kidney cell line Whole Cell Lysate

**Lane 5** : HepG2 (Human hepatocellular liver carcinoma cell line) Whole Cell Lysate

**Lane 6** : MCF7 (Human breast adenocarcinoma cell line) Whole

Cell Lysate

**Lane 7 :** SHSY-5Y (Human neuroblastoma cell line) Whole Cell Lysate

**Lane 8 :** U2OS (Human osteosarcoma cell line) Whole Cell Lysate

Lysates/proteins at 10 µg per lane.

### Secondary

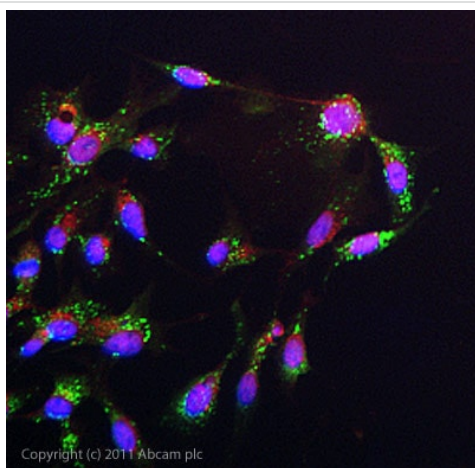
**All lanes :** IRDye 680 Conjugated Goat Anti-Rabbit IgG (H+L) at 1/10000 dilution

Performed under reducing conditions.

**Predicted band size:** 40 kDa

**Observed band size:** 55 kDa

Wnt6 has a predicted molecular weight of 40 kDa; however it has a number of potential glycosylation sites which may affect the migration of the protein (SwissProt data). Abcam currently sell two antibodies to this target, [ab49946](#) which detects a band at 78 kDa and ab50030 which detects a band at 55 kDa. Abcam welcomes customer feedback and would appreciate any comments regarding this product and the data presented above.



Immunocytochemistry/ Immunofluorescence - Anti-Wnt6 antibody (ab50030)

ICC/IF image of ab50030 stained HepG2 cells. The cells were 4% PFA fixed (10 min) and then incubated in 1%BSA / 10% normal goat serum / 0.3M glycine in 0.1% PBS-Tween for 1h to permeabilise the cells and block non-specific protein-protein interactions. The cells were then incubated with the antibody (ab50030, 1µg/ml) overnight at +4°C. The secondary antibody (green) was [ab96899](#) Dylight 488 goat anti-rabbit IgG (H+L) used at a 1/250 dilution for 1h. Alexa Fluor® 594 WGA was used to label plasma membranes (red) at a 1/200 dilution for 1h. DAPI was used to stain the cell nuclei (blue) at a concentration of 1.43µM.

**Please note:** All products are "FOR RESEARCH USE ONLY. NOT FOR USE IN DIAGNOSTIC PROCEDURES"

### **Our Abpromise to you: Quality guaranteed and expert technical support**

---

- Replacement or refund for products not performing as stated on the datasheet
- Valid for 12 months from date of delivery
- Response to your inquiry within 24 hours
  
- We provide support in Chinese, English, French, German, Japanese and Spanish
- Extensive multi-media technical resources to help you
- We investigate all quality concerns to ensure our products perform to the highest standards

If the product does not perform as described on this datasheet, we will offer a refund or replacement. For full details of the Abpromise, please visit <https://www.abcam.com/abpromise> or contact our technical team.

### **Terms and conditions**

---

- Guarantee only valid for products bought direct from Abcam or one of our authorized distributors