

## Product datasheet

# Anti-Wnt6 antibody [EPR9244] ab154144

Recombinant RabMAb

[3 References](#) [2 Images](#)

### Overview

<b>Product name</b>	Anti-Wnt6 antibody [EPR9244]
<b>Description</b>	Rabbit monoclonal [EPR9244] to Wnt6
<b>Host species</b>	Rabbit
<b>Tested applications</b>	<b>Suitable for:</b> WB <b>Unsuitable for:</b> Flow Cyt, ICC/IF, IHC-P or IP
<b>Species reactivity</b>	<b>Reacts with:</b> Mouse, Rat, Human
<b>Immunogen</b>	Synthetic peptide corresponding to Human Wnt6.
<b>Positive control</b>	HeLa, Jurkat, SH-SY5Y, C6, RAW 264.7, PC12, NIH 3T3 and Neuro 2a cell lysates.
<b>General notes</b>	<p>This product is a recombinant monoclonal antibody, which offers several advantages including:</p> <ul style="list-style-type: none"><li>- High batch-to-batch consistency and reproducibility</li><li>- Improved sensitivity and specificity</li><li>- Long-term security of supply</li><li>- Animal-free production</li></ul> <p>For more information <a href="#">see here</a>.</p> <p>Our RabMAb<sup>®</sup> technology is a patented hybridoma-based technology for making rabbit monoclonal antibodies. For details on our patents, please refer to <a href="#">RabMAb<sup>®</sup> patents</a>.</p>

### Properties

<b>Form</b>	Liquid
<b>Storage instructions</b>	Shipped at 4°C. Store at -20°C.
<b>Storage buffer</b>	pH: 7.2 Preservative: 0.01% Sodium azide Constituents: 9% PBS, 40% Glycerol (glycerin, glycerine), 0.05% BSA, 50% Tissue culture supernatant
<b>Purity</b>	Tissue culture supernatant
<b>Clonality</b>	Monoclonal
<b>Clone number</b>	EPR9244
<b>Isotype</b>	IgG

## Applications

**The Abpromise guarantee** Our **Abpromise guarantee** covers the use of ab154144 in the following tested applications. The application notes include recommended starting dilutions; optimal dilutions/concentrations should be determined by the end user.

Application	Abreviews	Notes
WB		1/1000 - 1/10000. Predicted molecular weight: 40 kDa.

**Application notes** Is unsuitable for Flow Cyt, ICC/IF, IHC-P or IP.

## Target

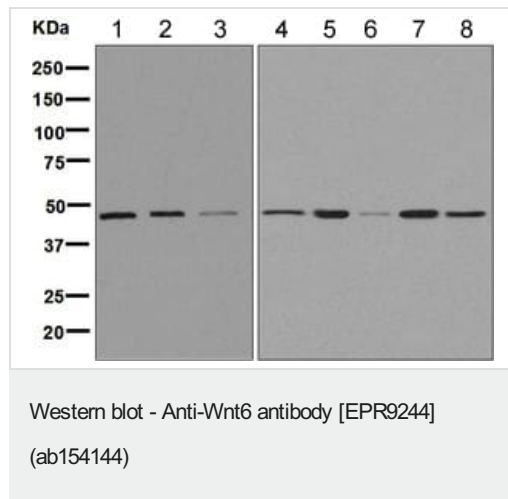
**Function** Ligand for members of the frizzled family of seven transmembrane receptors. Probable developmental protein. May be a signaling molecule which affects the development of discrete regions of tissues. Is likely to signal over only few cell diameters.

**Sequence similarities** Belongs to the Wnt family.

**Post-translational modifications** Palmitoylation at Ser-228 is required for efficient binding to frizzled receptors. It is also required for subsequent palmitoylation at Cys-76. Palmitoylation is necessary for proper trafficking to cell surface.

**Cellular localization** Secreted > extracellular space > extracellular matrix.

## Images



**All lanes** : Anti-Wnt6 antibody [EPR9244] (ab154144) at 1/1000 dilution

**Lane 1** : HeLa cell lysate

**Lane 2** : Jurkat cell lysate

**Lane 3** : SH-SY5Y cell lysate

**Lane 4** : C6 cell lysate

**Lane 5** : RAW 264.7 cell lysate

**Lane 6** : PC12 cell lysate

**Lane 7** : NIH 3T3 cell lysate

**Lane 8** : Neuro 2a cell lysate

Lysates/proteins at 10 µg per lane.

### Secondary

**All lanes** : Goat anti-rabbit HRP at 1/2000 dilution

**Predicted band size:** 40 kDa

Why choose a recombinant antibody?



**Research with confidence**  
Consistent and reproducible results

**Long-term and scalable supply**  
Recombinant technology

**Success from the first experiment**  
Confirmed specificity

**Ethical standards compliant**  
Animal-free production

Anti-Wnt6 antibody [EPR9244] (ab154144)

**Please note:** All products are "FOR RESEARCH USE ONLY. NOT FOR USE IN DIAGNOSTIC PROCEDURES"

### Our Abpromise to you: Quality guaranteed and expert technical support

---

- Replacement or refund for products not performing as stated on the datasheet
- Valid for 12 months from date of delivery
- Response to your inquiry within 24 hours
- We provide support in Chinese, English, French, German, Japanese and Spanish
- Extensive multi-media technical resources to help you
- We investigate all quality concerns to ensure our products perform to the highest standards

If the product does not perform as described on this datasheet, we will offer a refund or replacement. For full details of the Abpromise, please visit <https://www.abcam.com/abpromise> or contact our technical team.

### Terms and conditions

---

- Guarantee only valid for products bought direct from Abcam or one of our authorized distributors