


## Product datasheet

### Anti-WRNIP1/WHIP antibody ab99316

★★★★★ [1 Abreviews](#) [1 References](#) [4 Images](#)

#### Overview

---

<b>Product name</b>	Anti-WRNIP1/WHIP antibody
<b>Description</b>	Rabbit polyclonal to WRNIP1/WHIP
<b>Host species</b>	Rabbit
<b>Tested applications</b>	<b>Suitable for:</b> WB, IP, IHC-P
<b>Species reactivity</b>	<b>Reacts with:</b> Human <b>Predicted to work with:</b> Rat, Horse, Dog, Chimpanzee, Ferret, Rhesus monkey, Gorilla, Chinese hamster, Orangutan 
<b>Immunogen</b>	Synthetic peptide corresponding to Human WRNIP1/WHIP aa 400-500. NP_064520.2 Database link: <a href="#">Q96S55</a>
<b>Positive control</b>	HeLa whole cell lysate
<b>General notes</b>	<p>The Life Science industry has been in the grips of a reproducibility crisis for a number of years. Abcam is leading the way in addressing this with our range of recombinant monoclonal antibodies and knockout edited cell lines for gold-standard validation. Please check that this product meets your needs before purchasing.</p> <p>If you have any questions, special requirements or concerns, please send us an inquiry and/or contact our Support team ahead of purchase. Recommended alternatives for this product can be found below, along with publications, customer reviews and Q&amp;As</p>

#### Properties

---

<b>Form</b>	Liquid
<b>Storage instructions</b>	Shipped at 4°C. Upon delivery aliquot and store at -20°C. Avoid freeze / thaw cycles.
<b>Storage buffer</b>	pH: 7 Preservative: 0.09% Sodium azide Constituent: Tris citrate/phosphate
<b>Purity</b>	Immunogen affinity purified
<b>Purification notes</b>	ab99316 was affinity purified using an epitope specific to WRNIP1/WHIP immobilized on solid support
<b>Clonality</b>	Polyclonal
<b>Isotype</b>	IgG

## Applications

### The Abpromise guarantee

Our **Abpromise guarantee** covers the use of ab99316 in the following tested applications.

The application notes include recommended starting dilutions; optimal dilutions/concentrations should be determined by the end user.

Application	Abreviews	Notes
WB	★★★★★ (1)	1/2000 - 1/10000. Predicted molecular weight: 69 kDa.
IP		Use at 2-5 µg/mg of lysate.
IHC-P		1/500 - 1/2000. Perform heat mediated antigen retrieval with citrate buffer pH 6 before commencing with IHC staining protocol.

## Target

### Function

Functions as a modulator for initiation or reinitiation events during DNA polymerase delta-mediated DNA synthesis. Has an intrinsic ATPase activity that functions as a sensor of DNA damage or of arrested replication forks and regulates the extent of DNA synthesis.

### Tissue specificity

Ubiquitously expressed.

### Sequence similarities

Belongs to the AAA ATPase family.  
Contains 1 UBZ-type zinc finger.

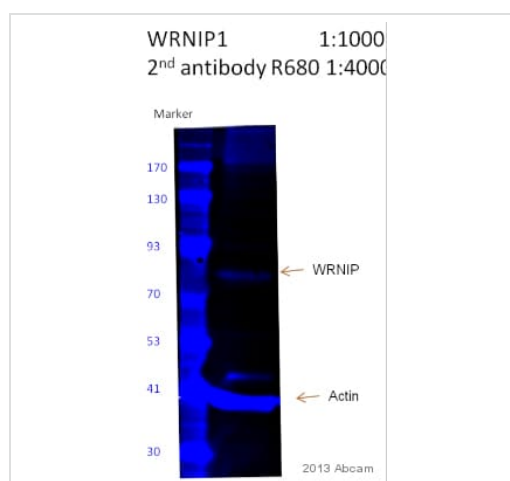
### Post-translational modifications

Sumoylated by SUMO1 and SUMO2/3.

### Cellular localization

Nucleus. Colocalizes with WRN in granular structures in the nucleus.

## Images



Western blot - Anti-WRNIP1/WHIP antibody (ab99316)

This image is courtesy of an anonymous Abreview

Anti-WRNIP1/WHIP antibody (ab99316) at 1/1000 dilution + Mouse T cell lysate at 80 µg

### Secondary

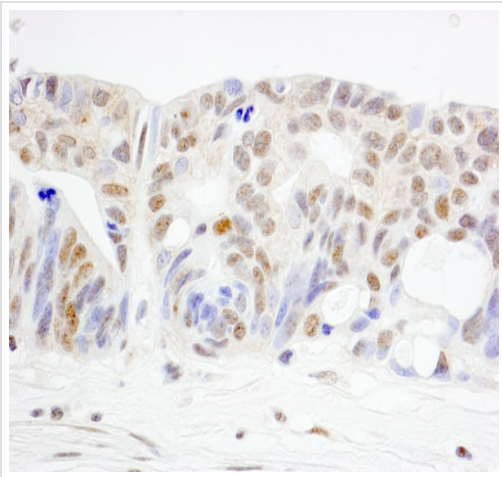
IRDye® 680-conjugated Goat anti-rabbit IgG polyclonal at 1/4000 dilution

Performed under reducing conditions.

**Predicted band size:** 69 kDa

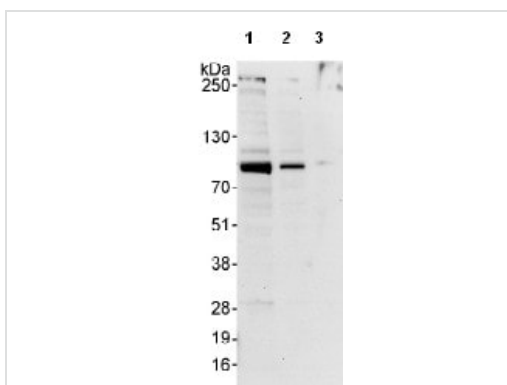
**Observed band size:** 75 kDa

**Exposure time:** 5 minutes



Immunohistochemistry (Formalin/PFA-fixed paraffin-embedded sections) - Anti-WRNIP1/WHIP antibody (ab99316)

Immunohistochemistry (Formalin/PFA-fixed paraffin-embedded sections) analysis of human ovarian carcinoma tissue labelling WRNIP1/WHIP with ab99316 at 1/1000 (1µg/ml). Detection: DAB.



Western blot - Anti-WRNIP1/WHIP antibody (ab99316)

**All lanes :** Anti-WRNIP1/WHIP antibody (ab99316) at 0.4 µg/ml

**Lane 1 :** HeLa whole cell lysate at 50 µg

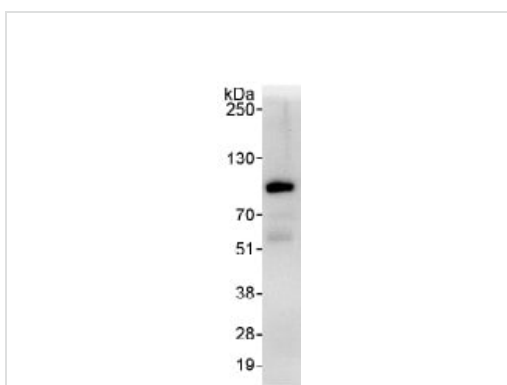
**Lane 2 :** HeLa whole cell lysate at 15 µg

**Lane 3 :** HeLa whole cell lysate at 5 µg

Developed using the ECL technique.

**Predicted band size:** 69 kDa

**Exposure time:** 30 seconds



Immunoprecipitation - Anti-WRNIP1/WHIP antibody (ab99316)

Detection of WRNIP1/WHIP by Western Blot of Immunoprecipitate. ab99316, at 1 µg/ml, staining WRNIP1/WHIP in HeLa whole cell lysate immunoprecipitated using ab99316 at 3µg/mg lysate (1 mg/IP; 20% of IP loaded/lane).

Detection: Chemiluminescence with exposure time of 30 seconds.

**Please note:** All products are "FOR RESEARCH USE ONLY. NOT FOR USE IN DIAGNOSTIC PROCEDURES"

## **Our Abpromise to you: Quality guaranteed and expert technical support**

---

- Replacement or refund for products not performing as stated on the datasheet
- Valid for 12 months from date of delivery
- Response to your inquiry within 24 hours
  
- We provide support in Chinese, English, French, German, Japanese and Spanish
- Extensive multi-media technical resources to help you
- We investigate all quality concerns to ensure our products perform to the highest standards

If the product does not perform as described on this datasheet, we will offer a refund or replacement. For full details of the Abpromise, please visit <https://www.abcam.com/abpromise> or contact our technical team.

## **Terms and conditions**

---

- Guarantee only valid for products bought direct from Abcam or one of our authorized distributors