

Product datasheet

Anti-WSX-1 antibody ab5997

[2 References](#) [3 Images](#)

Overview

| | |
|----------------------------|---|
| Product name | Anti-WSX-1 antibody |
| Description | Rabbit polyclonal to WSX-1 |
| Host species | Rabbit |
| Tested applications | Suitable for: WB, ICC/IF, IHC-P |
| Species reactivity | Reacts with: Human |
| Immunogen | Synthetic peptide corresponding to Human WSX-1 aa 44-59 (N terminal). Sequence: GSAGPLQCYGVGPLGD Run BLAST with Run BLAST with |
| Positive control | Human spleen tissue lysate. |
| General notes | <p>The Life Science industry has been in the grips of a reproducibility crisis for a number of years. Abcam is leading the way in addressing this with our range of recombinant monoclonal antibodies and knockout edited cell lines for gold-standard validation. Please check that this product meets your needs before purchasing.</p> <p>If you have any questions, special requirements or concerns, please send us an inquiry and/or contact our Support team ahead of purchase. Recommended alternatives for this product can be found below, along with publications, customer reviews and Q&As</p> |

Properties

| | |
|-----------------------------|--|
| Form | Liquid |
| Storage instructions | Shipped at 4°C. Store at +4°C short term (1-2 weeks). Store at -20°C long term. Avoid freeze / thaw cycle. |
| Storage buffer | pH: 7.2 Preservative: 0.02% Sodium azide Constituent: PBS |
| Purity | Immunogen affinity purified |
| Clonality | Polyclonal |
| Isotype | IgG |

Applications

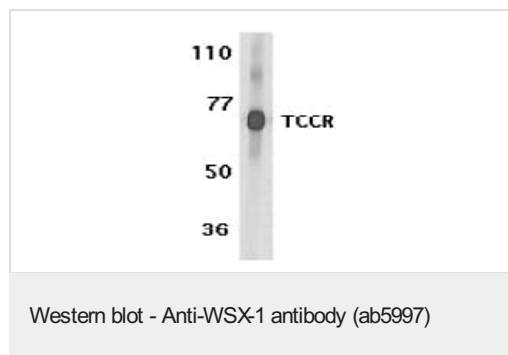
The Abpromise guarantee Our **Abpromise guarantee** covers the use of ab5997 in the following tested applications. The application notes include recommended starting dilutions; optimal dilutions/concentrations should be determined by the end user.

| Application | Abreviews | Notes |
|-------------|-----------|---|
| WB | | Use a concentration of 0.5 - 1 µg/ml. Detects a band of approximately 70 kDa. |
| ICC/IF | | Use a concentration of 20 µg/ml. |
| IHC-P | | Use a concentration of 10 µg/ml. |

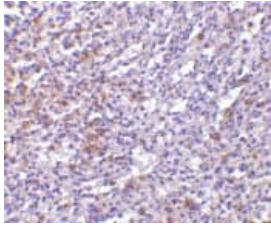
Target

| | |
|------------------------------|---|
| Function | Receptor for IL27. Requires IL6ST/gp130 to mediate signal transduction in response to IL27. This signaling system acts through STAT3 and STAT1. Involved in the regulation of Th1-type immune responses. Also appears to be involved in innate defense mechanisms. |
| Tissue specificity | Highly expressed in lymphoid tissues such as spleen, lymph nodes and peripheral blood leukocytes. Weakly expressed in other tissues examined including heart, brain, fetal and adult lung, liver, skeletal muscle, kidney, pancreas, prostate, testis, ovary, small intestine, kidney and colon. In the lymphoid system, higher level expression in CD4+ T-cell subsets than in CD8+ T-cell subsets. Also weaker expression in CD19+ B-cells and monocytes. |
| Sequence similarities | Belongs to the type I cytokine receptor family. Type 2 subfamily. Contains 3 fibronectin type-III domains. |
| Domain | The WSXWS motif appears to be necessary for proper protein folding and thereby efficient intracellular transport and cell-surface receptor binding. The box 1 motif is required for JAK interaction and/or activation. |
| Cellular localization | Membrane. |

Images



Western blot analysis of WSX-1 expression in human spleen tissue lysates with ab5997 at 1 µg/ml. Western blot analysis of WSX-1 expression in human spleen tissue lysates with ab5997 at 1 µg/ml.



ab5997 at 10 μ g/ml staining WSX-1 in human spleen tissue by IHC

Immunohistochemistry (Formalin/PFA-fixed paraffin-embedded sections) - Anti-WSX-1 antibody (ab5997)

Immunocytochemistry/ Immunofluorescence - Anti-WSX-1 antibody (ab5997)

Immunofluorescence of WSX-1 in A549 cells using ab5997 at 20 μ g/ml.

Please note: All products are "FOR RESEARCH USE ONLY. NOT FOR USE IN DIAGNOSTIC PROCEDURES"

Our Abpromise to you: Quality guaranteed and expert technical support

- Replacement or refund for products not performing as stated on the datasheet
- Valid for 12 months from date of delivery
- Response to your inquiry within 24 hours
- We provide support in Chinese, English, French, German, Japanese and Spanish
- Extensive multi-media technical resources to help you
- We investigate all quality concerns to ensure our products perform to the highest standards

If the product does not perform as described on this datasheet, we will offer a refund or replacement. For full details of the Abpromise, please visit <https://www.abcam.com/abpromise> or contact our technical team.

Terms and conditions

- Guarantee only valid for products bought direct from Abcam or one of our authorized distributors