


Product datasheet

Anti-XPO6 antibody ab72333

[2 References](#) [1 Image](#)

Overview

Product name	Anti-XPO6 antibody
Description	Rabbit polyclonal to XPO6
Host species	Rabbit
Tested applications	Suitable for: IP
Species reactivity	Reacts with: Human Predicted to work with: Mouse, Rat, Horse, Chicken, Guinea pig, Cow, Dog, Turkey, Pig, Xenopus laevis, Chimpanzee, Rhesus monkey, Gorilla, Orangutan, Xenopus tropicalis, Platypus 
Immunogen	Synthetic peptide from a region between residue 1075 and 1125 of human XPO6, NP_055986.1.
Positive control	Whole cell lysate from Hela cells.
General notes	<p>The Life Science industry has been in the grips of a reproducibility crisis for a number of years. Abcam is leading the way in addressing this with our range of recombinant monoclonal antibodies and knockout edited cell lines for gold-standard validation. Please check that this product meets your needs before purchasing.</p> <p>If you have any questions, special requirements or concerns, please send us an inquiry and/or contact our Support team ahead of purchase. Recommended alternatives for this product can be found below, along with publications, customer reviews and Q&As</p>

Properties

Form	Liquid
Storage instructions	Shipped at 4°C. Upon delivery aliquot and store at -20°C. Avoid freeze / thaw cycles.
Storage buffer	pH: 7 Preservative: 0.09% Sodium azide Constituents: 1.815% Tris, 1.764% Sodium citrate, 0.021% PBS
Purity	Immunogen affinity purified
Clonality	Polyclonal
Isotype	IgG

Applications

The Abpromise guarantee

Our **Abpromise guarantee** covers the use of ab72333 in the following tested applications.

The application notes include recommended starting dilutions; optimal dilutions/concentrations should be determined by the end user.

Application	Abreviews	Notes
IP		

Application notes

IP: Use at 2-5µg/mg of lysate.

Is unsuitable for WB. This antibody can be used for WB of enriched sources of XPO6 e.g. immunoprecipitated XPO6, but it has not performed satisfactorily on crude preparations (e.g. whole cell lysate).

Not yet tested in other applications.

Optimal dilutions/concentrations should be determined by the end user.

Target

Function

Mediates the nuclear export of actin and profilin-actin complexes in somatic cells.

Sequence similarities

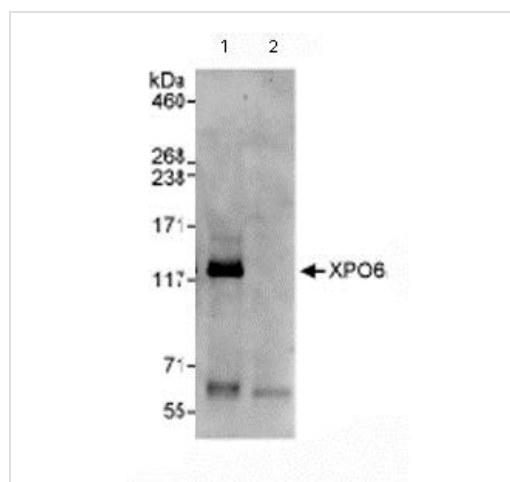
Belongs to the exportin family.

Contains 1 importin N-terminal domain.

Cellular localization

Nucleus. Cytoplasm. Shuttles between the nucleus and the cytoplasm.

Images



Immunoprecipitation - Anti-XPO6 antibody (ab72333)

Immunoprecipitation/ Western Blot of XPO6.

Lane 1: ab72333 at 3µg/mg whole cell lysate.

Lane 2: Control IgG.

ab72333 at 1µg/ml for WB.

Whole cell lysate from Hela cells at 1mg for IP, 20% of IP loaded.

Chemiluminescence with an exposure time of 30 seconds.

Please note: All products are "FOR RESEARCH USE ONLY. NOT FOR USE IN DIAGNOSTIC PROCEDURES"

Our Abpromise to you: Quality guaranteed and expert technical support

- Replacement or refund for products not performing as stated on the datasheet
- Valid for 12 months from date of delivery
- Response to your inquiry within 24 hours

- We provide support in Chinese, English, French, German, Japanese and Spanish
- Extensive multi-media technical resources to help you
- We investigate all quality concerns to ensure our products perform to the highest standards

If the product does not perform as described on this datasheet, we will offer a refund or replacement. For full details of the Abpromise, please visit <https://www.abcam.com/abpromise> or contact our technical team.

Terms and conditions

- Guarantee only valid for products bought direct from Abcam or one of our authorized distributors