


# Anti-XRCC1 antibody ab235196

[1 References](#) [2 Images](#)

### Overview

<b>Product name</b>	Anti-XRCC1 antibody
<b>Description</b>	Chicken polyclonal to XRCC1
<b>Host species</b>	Chicken
<b>Tested applications</b>	<b>Suitable for:</b> WB, ICC/IF
<b>Species reactivity</b>	<b>Reacts with:</b> Mouse, Human <b>Predicted to work with:</b> Rat, Chinese hamster 
<b>Immunogen</b>	Synthetic peptide. This information is proprietary to Abcam and/or its suppliers.
<b>Positive control</b>	WB: U-2 OS and Molt4 whole cell lysate. ICC/IF: U-2 OS cells.
<b>General notes</b>	<p>The Life Science industry has been in the grips of a reproducibility crisis for a number of years. Abcam is leading the way in addressing this with our range of recombinant monoclonal antibodies and knockout edited cell lines for gold-standard validation. Please check that this product meets your needs before purchasing.</p> <p>If you have any questions, special requirements or concerns, please send us an inquiry and/or contact our Support team ahead of purchase. Recommended alternatives for this product can be found below, along with publications, customer reviews and Q&amp;As</p>

### Properties

<b>Form</b>	Liquid
<b>Storage instructions</b>	Shipped at 4°C. Store at +4°C short term (1-2 weeks). Upon delivery aliquot. Store at -20°C long term. Avoid freeze / thaw cycle.
<b>Storage buffer</b>	Preservative: 0.01% Sodium azide Constituent: PBS
<b>Purity</b>	Affinity purified
<b>Clonality</b>	Polyclonal
<b>Isotype</b>	IgY

### Applications

The **Abpromise guarantee** Our **Abpromise guarantee** covers the use of ab235196 in the following tested applications.

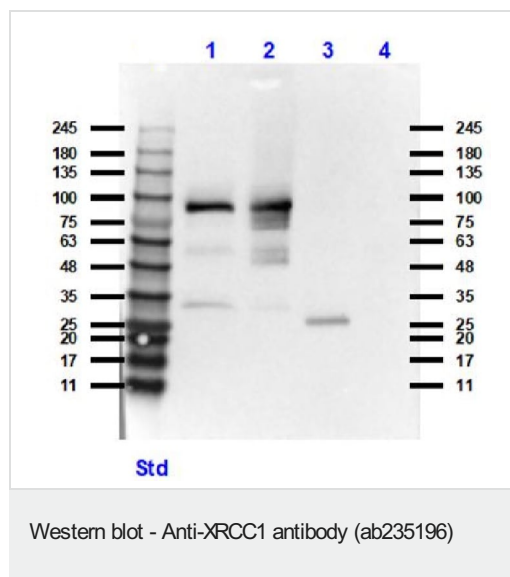
The application notes include recommended starting dilutions; optimal dilutions/concentrations should be determined by the end user.

Application	Abreviews	Notes
WB		Use at an assay dependent concentration. Predicted molecular weight: 69 kDa.
ICC/IF		Use at an assay dependent concentration.

## Target

<b>Function</b>	Corrects defective DNA strand-break repair and sister chromatid exchange following treatment with ionizing radiation and alkylating agents.
<b>Sequence similarities</b>	Contains 2 BRCT domains.
<b>Post-translational modifications</b>	Phosphorylation of Ser-371 causes dimer dissociation. Phosphorylation by CK2 promotes interaction with APTX and APLF. Sumoylated.
<b>Cellular localization</b>	Nucleus. Accumulates at sites of DNA damage.

## Images



**All lanes** : Anti-XRCC1 antibody (ab235196) at 5 µg/ml

**Lane 1** : U-2 OS whole cell lysate

**Lane 2** : Molt4 whole cell lysate

**Lane 3** : Human testis whole tissue lysate

**Lane 4** : Mouse liver whole tissue lysate

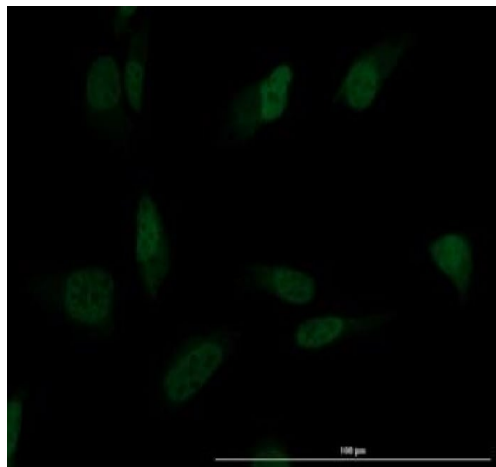
Lysates/proteins at 35 µg per lane.

### Secondary

**All lanes** : Goat anti-Chicken IgG [H&L] at 1/40000 dilution

**Predicted band size:** 69 kDa

**Exposure time:** 20 seconds



Immunocytochemistry/ Immunofluorescence - Anti-XRCC1 antibody (ab235196)

100% methanol-fixed, 0.3% Triton X-100 permeabilized U-2 OS (human bone osteosarcoma epithelial cell line) cells labeling XRCC1 using ab235196 at 10 µg/ml, overnight at +4°C. Followed by a Donkey anti-Chicken IgG DyLight™ 488 conjugated preadsorbed secondary antibody at 5 µg/ml, for 1 hour at RT.

**Please note:** All products are "FOR RESEARCH USE ONLY. NOT FOR USE IN DIAGNOSTIC PROCEDURES"

### Our Abpromise to you: Quality guaranteed and expert technical support

---

- Replacement or refund for products not performing as stated on the datasheet
- Valid for 12 months from date of delivery
- Response to your inquiry within 24 hours
- We provide support in Chinese, English, French, German, Japanese and Spanish
- Extensive multi-media technical resources to help you
- We investigate all quality concerns to ensure our products perform to the highest standards

If the product does not perform as described on this datasheet, we will offer a refund or replacement. For full details of the Abpromise, please visit <https://www.abcam.com/abpromise> or contact our technical team.

### Terms and conditions

---

- Guarantee only valid for products bought direct from Abcam or one of our authorized distributors