


Product datasheet

Anti-XRCC1 antibody ab9147

★★★★☆ [2 Abreviews](#) [15 References](#) [1 Image](#)

Overview

Product name	Anti-XRCC1 antibody
Description	Rabbit polyclonal to XRCC1
Host species	Rabbit
Specificity	This antibody recognises human XRCC1 (x-ray cross complementing factor -1), a base excision repair protein.
Tested applications	Suitable for: WB
Species reactivity	Reacts with: Human Predicted to work with: Rat, Horse, Guinea pig, Hamster, Cow, Dog, Pig, Chimpanzee, Ferret, Rhesus monkey, Gorilla, Orangutan 
Immunogen	Synthetic peptide (Human) conjugated to KLH - which represented a portion within the last 100 amino acids of the human X-ray Repair Cross Complementing Protein 1 (GenBank PID 11425942).
General notes	<p>Recently XRCC-1 has been shown to be physically associated with other DNA repair enzymes, including PARP, DNA ligase III and DNA polymerase beta.</p> <p>The Life Science industry has been in the grips of a reproducibility crisis for a number of years. Abcam is leading the way in addressing this with our range of recombinant monoclonal antibodies and knockout edited cell lines for gold-standard validation. Please check that this product meets your needs before purchasing.</p> <p>If you have any questions, special requirements or concerns, please send us an inquiry and/or contact our Support team ahead of purchase. Recommended alternatives for this product can be found below, along with publications, customer reviews and Q&As</p>

Properties

Form	Liquid
Storage instructions	Shipped at 4°C. Upon delivery aliquot and store at -20°C. Avoid freeze / thaw cycles.
Storage buffer	pH: 7 Preservative: 0.1% Sodium azide Constituents: 0.021% PBS, 1.764% Sodium citrate, 1.815% Tris
Purity	Immunogen affinity purified
Purification notes	Antibodies were affinity purified using the peptide immobilized on solid support. Antibody

concentration was determined by extinction coefficient: absorbance at 280 nm of 1.4 equals 1.0 mg of IgG.

Clonality Polyclonal
Isotype IgG

Applications

The Abpromise guarantee Our **Abpromise guarantee** covers the use of ab9147 in the following tested applications. The application notes include recommended starting dilutions; optimal dilutions/concentrations should be determined by the end user.

Application	Abreviews	Notes
WB	★★★★★ (1)	1/1000 - 1/10000. Detects a band of approximately 90 kDa (predicted molecular weight: 70 kDa).

Target

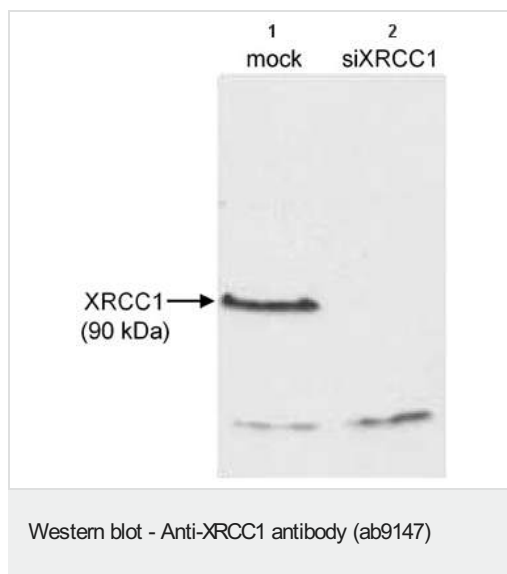
Function Corrects defective DNA strand-break repair and sister chromatid exchange following treatment with ionizing radiation and alkylating agents.

Sequence similarities Contains 2 BRCT domains.

Post-translational modifications Phosphorylation of Ser-371 causes dimer dissociation. Phosphorylation by CK2 promotes interaction with APTX and APLF. Sumoylated.

Cellular localization Nucleus. Accumulates at sites of DNA damage.

Images



All lanes : Anti-XRCC1 antibody (ab9147) at 1 µg/ml

Lane 1 : Whole cell extract (50mcg) from mock treated HeLa cells.

Lane 2 : Whole cell extract (50mcg) from siRNA treated HeLa cells.

Predicted band size: 70 kDa

Observed band size: 76,90 kDa

Detection: ECL.

Please note: All products are "FOR RESEARCH USE ONLY. NOT FOR USE IN DIAGNOSTIC PROCEDURES"

Our Abpromise to you: Quality guaranteed and expert technical support

- Replacement or refund for products not performing as stated on the datasheet
- Valid for 12 months from date of delivery
- Response to your inquiry within 24 hours

- We provide support in Chinese, English, French, German, Japanese and Spanish
- Extensive multi-media technical resources to help you
- We investigate all quality concerns to ensure our products perform to the highest standards

If the product does not perform as described on this datasheet, we will offer a refund or replacement. For full details of the Abpromise, please visit <https://www.abcam.com/abpromise> or contact our technical team.

Terms and conditions

- Guarantee only valid for products bought direct from Abcam or one of our authorized distributors