


Product datasheet

Anti-XRCC1 (phospho S518 + T519 + T523) antibody ab84417

[1 References](#) [3 Images](#)

Overview

Product name	Anti-XRCC1 (phospho S518 + T519 + T523) antibody
Description	Rabbit polyclonal to XRCC1 (phospho S518 + T519 + T523)
Host species	Rabbit
Tested applications	Suitable for: IHC-P
Species reactivity	Reacts with: Mouse, Human Predicted to work with: Chimpanzee, Gorilla 
Immunogen	Synthetic peptide corresponding to Human XRCC1 (phospho S518 + T519 + T523).
Positive control	IHC: Human breast carcinoma, Mouse squamous cell carcinoma.
General notes	<p>The Life Science industry has been in the grips of a reproducibility crisis for a number of years. Abcam is leading the way in addressing this with our range of recombinant monoclonal antibodies and knockout edited cell lines for gold-standard validation. Please check that this product meets your needs before purchasing.</p> <p>If you have any questions, special requirements or concerns, please send us an inquiry and/or contact our Support team ahead of purchase. Recommended alternatives for this product can be found below, along with publications, customer reviews and Q&As</p>

Properties

Form	Liquid
Storage instructions	Shipped at 4°C. Upon delivery aliquot and store at -20°C. Avoid freeze / thaw cycles.
Storage buffer	pH: 6.8 Preservative: 0.09% Sodium azide Constituents: 0.1% BSA, Tris buffered saline
Purity	Immunogen affinity purified
Clonality	Polyclonal
Isotype	IgG

Applications

The Abpromise guarantee

Our **Abpromise guarantee** covers the use of ab84417 in the following tested applications.

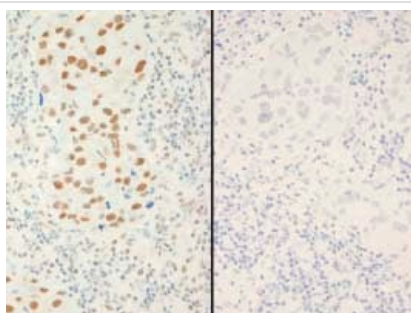
The application notes include recommended starting dilutions; optimal dilutions/concentrations should be determined by the end user.

Application	Abreviews	Notes
IHC-P		1/100 - 1/500. Perform heat mediated antigen retrieval with citrate buffer pH 6 before commencing with IHC staining protocol.

Target

Function	Corrects defective DNA strand-break repair and sister chromatid exchange following treatment with ionizing radiation and alkylating agents.
Sequence similarities	Contains 2 BRCT domains.
Post-translational modifications	Phosphorylation of Ser-371 causes dimer dissociation. Phosphorylation by CK2 promotes interaction with APTX and APLF. Sumoylated.
Cellular localization	Nucleus. Accumulates at sites of DNA damage.

Images



Immunohistochemistry (Formalin/PFA-fixed paraffin-embedded sections) - Anti-XRCC1 (phospho S518 + T519 + T523) antibody (ab84417)

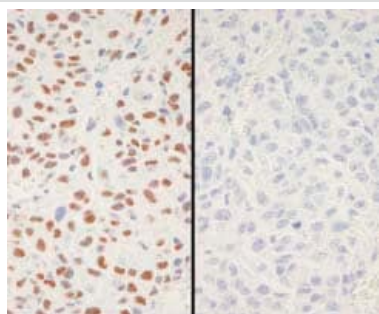
Detection of Human XRCC1 (phospho S518 + T519 + T523) by Immunohistochemistry.

Samples: FFPE serial sections of Human breast adenocarcinoma.

Mock phosphatase treated section (left) or calf intestinal phosphatase-treated section (right) immunostained for XRCC1 (phospho S518 + T519 + T523).

Antibody: ab84417 used at a dilution of 1/250.

Detection: DAB staining.

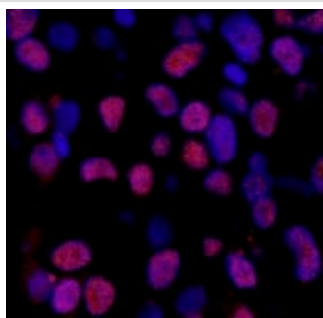


Immunohistochemistry (Formalin/PFA-fixed paraffin-embedded sections) - Anti-XRCC1 (phospho S518 + T519 + T523) antibody (ab84417)

Detection of Mouse XRCC1 (phospho S518 + T519 + T523) by Immunohistochemistry.

Samples: FFPE serial sections of Mouse squamous cell carcinoma. Mock phosphatase treated section (left) or calf intestinal phosphatase-treated section (right) immunostained for XRCC1 (phospho S518 + T519 + T523).

Antibody: ab84417 used at a dilution of 1/250. Detection: DAB staining.



Immunohistochemistry (Formalin/PFA-fixed paraffin-embedded sections) - Anti-XRCC1 (phospho S518 + T519 + T523) antibody (ab84417)

Detection of Human XRCC1 (phospho S518 + T519 + T523) by Immunofluorescence.

Sample: FFPE section of Human breast carcinoma.

Antibody: ab84417 used at a dilution of 1/100.

Detection: Red-fluorescent Alexa Fluor 555 goat anti-rabbit IgG used at a dilution of 1/500.

Please note: All products are "FOR RESEARCH USE ONLY. NOT FOR USE IN DIAGNOSTIC PROCEDURES"

Our Abpromise to you: Quality guaranteed and expert technical support

- Replacement or refund for products not performing as stated on the datasheet
- Valid for 12 months from date of delivery
- Response to your inquiry within 24 hours
- We provide support in Chinese, English, French, German, Japanese and Spanish
- Extensive multi-media technical resources to help you
- We investigate all quality concerns to ensure our products perform to the highest standards

If the product does not perform as described on this datasheet, we will offer a refund or replacement. For full details of the Abpromise, please visit <https://www.abcam.com/abpromise> or contact our technical team.

Terms and conditions

- Guarantee only valid for products bought direct from Abcam or one of our authorized distributors