



## Product datasheet

### Anti-XRCC6BP1/KUB3 antibody [OTI5F3] ab236425

4 Images

#### Overview

<b>Product name</b>	Anti-XRCC6BP1/KUB3 antibody [OTI5F3]
<b>Description</b>	Mouse monoclonal [OTI5F3] to XRCC6BP1/KUB3
<b>Host species</b>	Mouse
<b>Tested applications</b>	<b>Suitable for:</b> WB, IHC-P
<b>Species reactivity</b>	<b>Reacts with:</b> Human
<b>Immunogen</b>	Recombinant full length protein corresponding to Human XRCC6BP1/KUB3 aa 1 to the C-terminus. Produced in E.coli (NP_150592). Database link: <a href="#">Q9Y6H3</a>
	 <a href="#">Run BLAST with</a>  <a href="#">Run BLAST with</a>
<b>Positive control</b>	WB: pCMV6-ENTRY XRCC6BP1/KUB3 transfected HEK-293T cell lysate. IHC-P: Human ovary adenocarcinoma, endometrium adenocarcinoma and bladder tissue.
<b>General notes</b>	<p>The Life Science industry has been in the grips of a reproducibility crisis for a number of years. Abcam is leading the way in addressing this with our range of recombinant monoclonal antibodies and knockout edited cell lines for gold-standard validation. Please check that this product meets your needs before purchasing.</p> <p>If you have any questions, special requirements or concerns, please send us an inquiry and/or contact our Support team ahead of purchase. Recommended alternatives for this product can be found below, along with publications, customer reviews and Q&amp;As</p>

#### Properties

<b>Form</b>	Liquid
<b>Storage instructions</b>	Shipped at 4°C. Store at +4°C short term (1-2 weeks). Upon delivery aliquot. Store at -20°C long term. Avoid freeze / thaw cycle.
<b>Storage buffer</b>	pH: 7.30 Preservative: 0.02% Sodium azide Constituents: PBS, 1% BSA, 50% Glycerol
<b>Purity</b>	Affinity purified
<b>Purification notes</b>	Purified from cell culture supernatant.
<b>Clonality</b>	Monoclonal
<b>Clone number</b>	OTI5F3

Isotype

IgG1

## Applications

### The Abpromise guarantee

Our **Abpromise guarantee** covers the use of ab236425 in the following tested applications.

The application notes include recommended starting dilutions; optimal dilutions/concentrations should be determined by the end user.

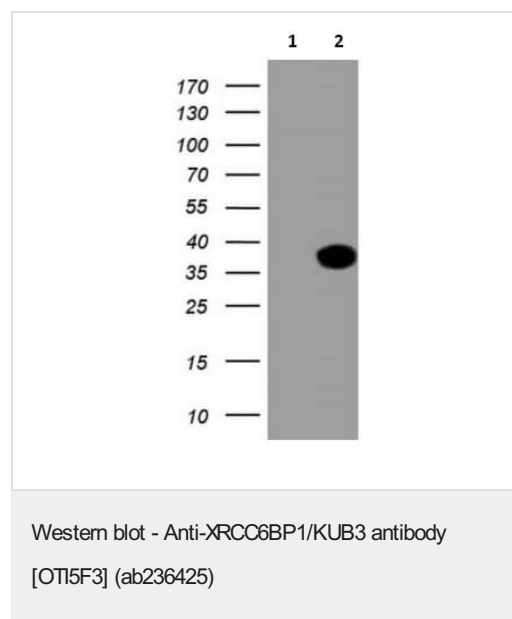
Application	Abreviews	Notes
WB		1/500. Predicted molecular weight: 28 kDa.
IHC-P		1/150. Perform heat-induced epitope retrieval by 1 mM EDTA in 10 mM Tris buffer (pH 8.5) at 120°C for 3 minutes.

## Target

### Relevance

XRCC6BP1 may be involved in double-strand break repair via nonhomologous end joining.

## Images



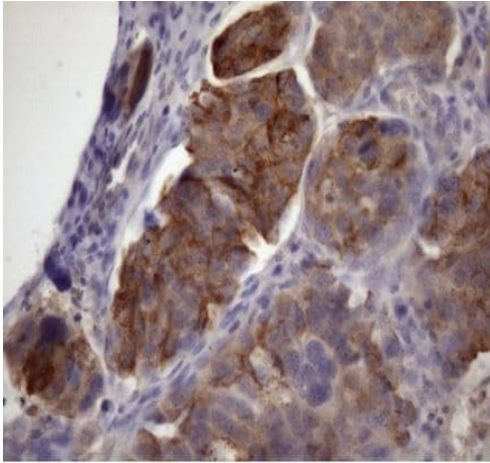
**All lanes :** Anti-XRCC6BP1/KUB3 antibody [OT15F3] (ab236425) at 1/500 dilution

**Lane 1 :** pCMV6-ENTRY control transfected HEK-293T (human epithelial cell line from embryonic kidney transformed with large T antigen) cell lysate

**Lane 2 :** pCMV6-ENTRY XRCC6BP1/KUB3 transfected HEK-293T cell lysate

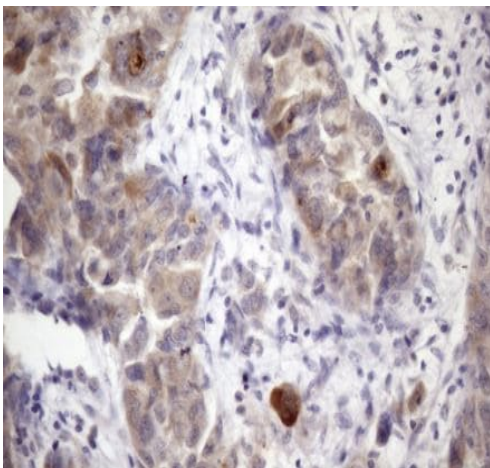
Lysates/proteins at 5 µg per lane.

**Predicted band size:** 28 kDa



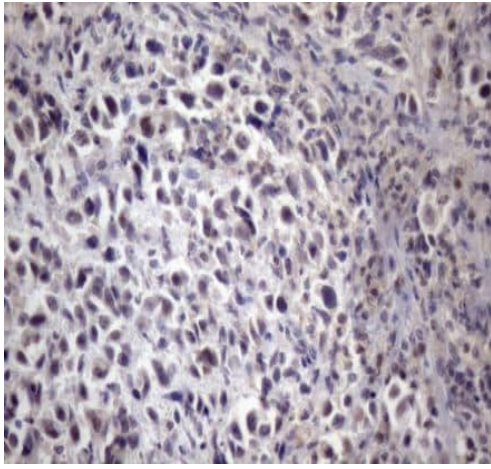
Paraffin-embedded human ovary adenocarcinoma tissue stained for XRCC6BP1/KUB3 using ab236425 at 1/150 dilution in immunohistochemical analysis.

Immunohistochemistry (Formalin/PFA-fixed paraffin-embedded sections) - Anti-XRCC6BP1/KUB3 antibody [OT15F3] (ab236425)



Paraffin-embedded human endometrium adenocarcinoma tissue stained for XRCC6BP1/KUB3 using ab236425 at 1/150 dilution in immunohistochemical analysis.

Immunohistochemistry (Formalin/PFA-fixed paraffin-embedded sections) - Anti-XRCC6BP1/KUB3 antibody [OT15F3] (ab236425)



Paraffin-embedded human bladder tissue stained for XRCC6BP1/KUB3 using ab236425 at 1/150 dilution in immunohistochemical analysis.

Immunohistochemistry (Formalin/PFA-fixed paraffin-embedded sections) - Anti-XRCC6BP1/KUB3 antibody [OT15F3] (ab236425)

**Please note:** All products are "FOR RESEARCH USE ONLY. NOT FOR USE IN DIAGNOSTIC PROCEDURES"

### Our Abpromise to you: Quality guaranteed and expert technical support

---

- Replacement or refund for products not performing as stated on the datasheet
- Valid for 12 months from date of delivery
- Response to your inquiry within 24 hours
- We provide support in Chinese, English, French, German, Japanese and Spanish
- Extensive multi-media technical resources to help you
- We investigate all quality concerns to ensure our products perform to the highest standards

If the product does not perform as described on this datasheet, we will offer a refund or replacement. For full details of the Abpromise, please visit <https://www.abcam.com/abpromise> or contact our technical team.

### Terms and conditions

---

- Guarantee only valid for products bought direct from Abcam or one of our authorized distributors