

Product datasheet

Anti-YB1 antibody [EP2706Y] ab76540

RabMAb

★★★★★ [1 Abreviews](#) [4 References](#) [2 Images](#)

Overview

Product name	Anti-YB1 antibody [EP2706Y]
Description	Rabbit monoclonal [EP2706Y] to YB1
Host species	Rabbit
Tested applications	Suitable for: Flow Cyt (Intra), WB Unsuitable for: ICC/IF or IHC-P
Species reactivity	Reacts with: Human
Immunogen	Synthetic peptide. This information is proprietary to Abcam and/or its suppliers.
Positive control	HeLa, 293T, Jurkat and MCF7 cell lysates; permeabilized HeLa cells.
General notes	<p>Our RabMAb[®] technology is a patented hybridoma-based technology for making rabbit monoclonal antibodies. For details on our patents, please refer to RabMAb[®] patents.</p> <p>The Life Science industry has been in the grips of a reproducibility crisis for a number of years. Abcam is leading the way in addressing this with our range of recombinant monoclonal antibodies and knockout edited cell lines for gold-standard validation. Please check that this product meets your needs before purchasing.</p> <p>If you have any questions, special requirements or concerns, please send us an inquiry and/or contact our Support team ahead of purchase. Recommended alternatives for this product can be found below, along with publications, customer reviews and Q&As</p> <p>Mouse, Rat: We have preliminary internal testing data to indicate this antibody may not react with these species. Please contact us for more information.</p>

Properties

Form	Liquid
Storage instructions	Shipped at 4°C. Upon delivery aliquot and store at -20°C. Avoid freeze / thaw cycles.
Storage buffer	pH: 7.20 Preservative: 0.05% Sodium azide Constituents: 0.1% BSA, 40% Glycerol (glycerin, glycerine), 9.85% Tris glycine, 50% Tissue culture supernatant
Purity	Protein A purified

Clonality	Monoclonal
Clone number	EP2706Y
Isotype	IgG

Applications

The Abpromise guarantee Our **Abpromise guarantee** covers the use of ab76540 in the following tested applications. The application notes include recommended starting dilutions; optimal dilutions/concentrations should be determined by the end user.

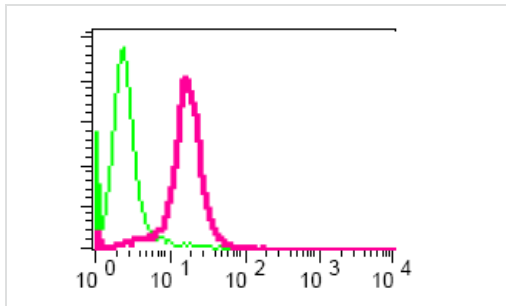
Application	Abreviews	Notes
Flow Cyt (Intra)		1/60. ab172730 - Rabbit monoclonal IgG, is suitable for use as an isotype control with this antibody.
WB	★★★★★ (1)	1/10000 - 1/20000. Predicted molecular weight: 36 kDa.

Application notes Is unsuitable for ICC/IF or IHC-P.

Target

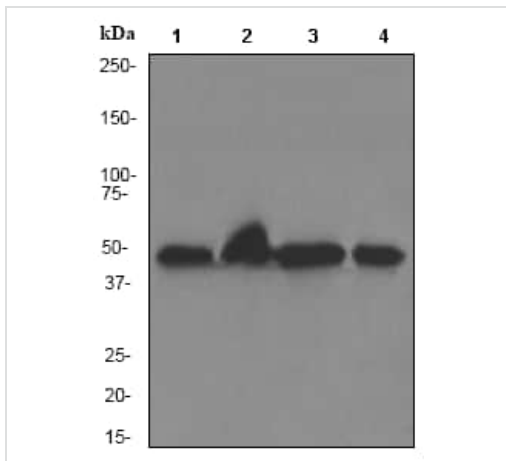
Function	<p>Mediates pre-mRNA alternative splicing regulation. Binds to splice sites in pre-mRNA and regulates splice site selection. Binds and stabilizes cytoplasmic mRNA. Contributes to the regulation of translation by modulating the interaction between the mRNA and eukaryotic initiation factors (By similarity). Regulates the transcription of numerous genes. Its transcriptional activity on the multidrug resistance gene MDR1 is enhanced in presence of the APEX1 acetylated form at 'Lys-6' and 'Lys-7'. Binds to promoters that contain a Y-box (5'-CTGATTGGCCAA-3'), such as MDR1 and HLA class II genes. Promotes separation of DNA strands that contain mismatches or are modified by cisplatin. Has endonucleolytic activity and can introduce nicks or breaks into double-stranded DNA (in vitro). May play a role in DNA repair. Component of the CRD-mediated complex that promotes MYC mRNA stability.</p> <p>The secreted form acts as an extracellular mitogen and stimulates cell migration and proliferation.</p>
Sequence similarities	Contains 1 CSD (cold-shock) domain.
Post-translational modifications	<p>Ubiquitinated by RBBP6; leading to a decrease of YBX1 transactivational ability.</p> <p>In the absence of phosphorylation the protein is retained in the cytoplasm.</p> <p>Cleaved by a 20S proteasomal protease in response to agents that damage DNA. Cleavage takes place in the absence of ubiquitination and ATP. The resulting N-terminal fragment accumulates in the nucleus.</p>
Cellular localization	<p>Cytoplasm. Nucleus. Cytoplasmic granule. Secreted. Localized in cytoplasmic mRNP granules containing untranslated mRNAs. Shuttles between nucleus and cytoplasm. Predominantly cytoplasmic in proliferating cells. Cytotoxic stress and DNA damage enhance translocation to the nucleus. Localized with DDX1, MBNL1 and TIAL1 in stress granules upon stress. Secreted by mesangial and monocytic cells after inflammatory challenges. Translocates from the cytoplasm to the nucleus after and colocalizes with APEX1 in nuclear speckles after genotoxic stress.</p>

Images



Flow Cytometry (Intracellular) - Anti-YB1 antibody
[EP2706Y] (ab76540)

Intracellular flow cytometric analysis of permeabilized HeLa cells using ab76540 at 1/60 dilution (red) or a rabbit IgG (negative) (green)



Western blot - Anti-YB1 antibody [EP2706Y]
(ab76540)

All lanes : Anti-YB1 antibody [EP2706Y] (ab76540) at 1/20000 dilution

Lane 1 : HeLa cell lysate

Lane 2 : 293T cell lysate

Lane 3 : Jurkat cell lysate

Lane 4 : MCF7 cell lysate

Lysates/proteins at 10 µg per lane.

Secondary

All lanes : goat anti-rabbit HRP at 1/1000 dilution

Predicted band size: 36 kDa

Observed band size: 47 kDa

Please note: All products are "FOR RESEARCH USE ONLY. NOT FOR USE IN DIAGNOSTIC PROCEDURES"

Our Abpromise to you: Quality guaranteed and expert technical support

- Replacement or refund for products not performing as stated on the datasheet
- Valid for 12 months from date of delivery
- Response to your inquiry within 24 hours
- We provide support in Chinese, English, French, German, Japanese and Spanish
- Extensive multi-media technical resources to help you
- We investigate all quality concerns to ensure our products perform to the highest standards

If the product does not perform as described on this datasheet, we will offer a refund or replacement. For full details of the Abpromise, please visit <https://www.abcam.com/abpromise> or contact our technical team.

Terms and conditions

- Guarantee only valid for products bought direct from Abcam or one of our authorized distributors