

Product datasheet

Anti-YB1 antibody [YBX1/2430] - BSA and Azide free ab268215

[2 Images](#)

Overview

Product name	Anti-YB1 antibody [YBX1/2430] - BSA and Azide free
Description	Mouse monoclonal [YBX1/2430] to YB1 - BSA and Azide free
Host species	Mouse
Tested applications	Suitable for: Protein Array, IHC-P
Species reactivity	Reacts with: Human
Immunogen	Recombinant full length protein within Human YB1 aa 1-324. The exact sequence is proprietary. Database link: P67809
Positive control	IHC-P: Human prostate carcinoma tissue.
General notes	<p>ab268215 is the carrier-free version of ab268094.</p> <p>Our carrier-free antibodies are typically supplied in a PBS-only formulation, purified and free of BSA, sodium azide and glycerol. The carrier-free buffer and high concentration allow for increased conjugation efficiency.</p> <p>This conjugation-ready format is designed for use with fluorochromes, metal isotopes, oligonucleotides, and enzymes, which makes them ideal for antibody labelling, functional and cell-based assays, flow-based assays (e.g. mass cytometry) and Multiplex Imaging applications.</p> <p>Use our conjugation kits for antibody conjugates that are ready-to-use in as little as 20 minutes with <1 minute hands-on-time and 100% antibody recovery: available for fluorescent dyes, HRP, biotin and gold.</p> <p>The Life Science industry has been in the grips of a reproducibility crisis for a number of years. Abcam is leading the way in addressing this with our range of recombinant monoclonal antibodies and knockout edited cell lines for gold-standard validation. Please check that this product meets your needs before purchasing.</p> <p>If you have any questions, special requirements or concerns, please send us an inquiry and/or contact our Support team ahead of purchase. Recommended alternatives for this product can be found below, along with publications, customer reviews and Q&As</p>

Properties

Form	Liquid
-------------	--------

Storage instructions	Shipped at 4°C. Store at +4°C short term (1-2 weeks). Upon delivery aliquot. Store at -20°C long term. Avoid freeze / thaw cycle.
Storage buffer	pH: 7.2 Constituent: PBS
Carrier free	Yes
Purity	Protein A/G purified
Purification notes	Purified from Bioreactor concentrate
Clonality	Monoclonal
Clone number	YBX1/2430
Isotype	IgG2b
Light chain type	kappa

Applications

The Abpromise guarantee Our **Abpromise guarantee** covers the use of ab268215 in the following tested applications. The application notes include recommended starting dilutions; optimal dilutions/concentrations should be determined by the end user.

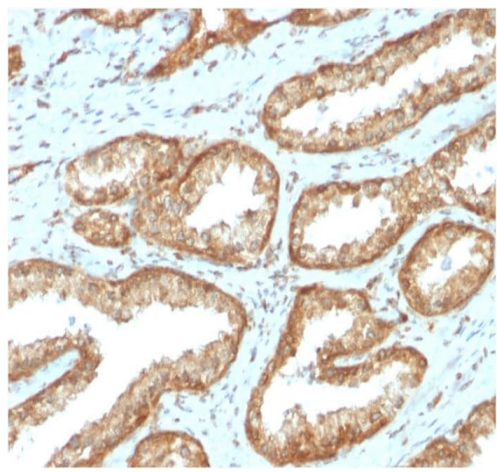
Application	Abreviews	Notes
Protein Array		Use at an assay dependent concentration.
IHC-P		Use a concentration of 1 - 2 µg/ml. Perform heat mediated antigen retrieval with Tris/EDTA buffer pH 9.0 before commencing with IHC staining protocol.

Target

Function	<p>Mediates pre-mRNA alternative splicing regulation. Binds to splice sites in pre-mRNA and regulates splice site selection. Binds and stabilizes cytoplasmic mRNA. Contributes to the regulation of translation by modulating the interaction between the mRNA and eukaryotic initiation factors (By similarity). Regulates the transcription of numerous genes. Its transcriptional activity on the multidrug resistance gene MDR1 is enhanced in presence of the APEX1 acetylated form at 'Lys-6' and 'Lys-7'. Binds to promoters that contain a Y-box (5'-CTGATTGGCCAA-3'), such as MDR1 and HLA class II genes. Promotes separation of DNA strands that contain mismatches or are modified by cisplatin. Has endonucleolytic activity and can introduce nicks or breaks into double-stranded DNA (in vitro). May play a role in DNA repair. Component of the CRD-mediated complex that promotes MYC mRNA stability.</p> <p>The secreted form acts as an extracellular mitogen and stimulates cell migration and proliferation.</p>
Sequence similarities	Contains 1 CSD (cold-shock) domain.
Post-translational modifications	<p>Ubiquitinated by RBBP6; leading to a decrease of YBX1 transactivational ability.</p> <p>In the absence of phosphorylation the protein is retained in the cytoplasm.</p> <p>Cleaved by a 20S proteasomal protease in response to agents that damage DNA. Cleavage takes place in the absence of ubiquitination and ATP. The resulting N-terminal fragment accumulates in the nucleus.</p>
Cellular localization	Cytoplasm. Nucleus. Cytoplasmic granule. Secreted. Localized in cytoplasmic mRNP granules containing untranslated mRNAs. Shuttles between nucleus and cytoplasm. Predominantly

cytoplasmic in proliferating cells. Cytotoxic stress and DNA damage enhance translocation to the nucleus. Localized with DDX1, MBNL1 and TIAL1 in stress granules upon stress. Secreted by mesangial and monocytic cells after inflammatory challenges. Translocates from the cytoplasm to the nucleus after and colocalizes with APEX1 in nuclear speckles after genotoxic stress.

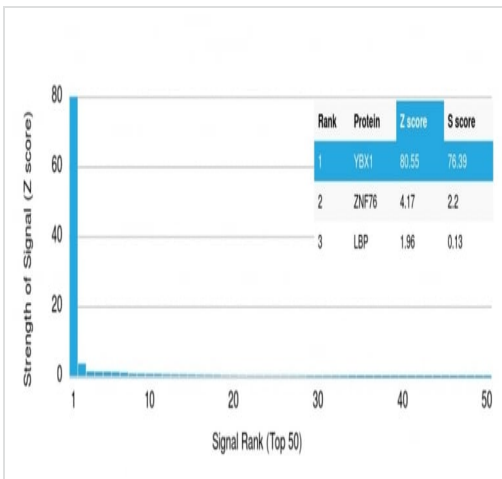
Images



Formalin-fixed, paraffin-embedded human prostate carcinoma tissue stained for YB1 with **ab268094** at 2 µg/ml in immunohistochemical analysis.

This data was developed using the same antibody clone in a different buffer formulation containing PBS, BSA and Sodium azide (**ab268094**).

Immunohistochemistry (Formalin/PFA-fixed paraffin-embedded sections) - Anti-YB1 antibody [YBX1/2430] - BSA and Azide free (ab268215)



Protein Array containing more than 19,000 full-length human proteins using **ab268094**.

Z- and S- Score: The Z-score represents the strength of a signal that a monoclonal antibody (Monoclonal Antibody) (in combination with a fluorescently-tagged anti-IgG secondary antibody) produces when binding to a particular protein on the HuProt™ array. Z-scores are described in units of standard deviations (SD's) above the mean value of all signals generated on that array. If targets on HuProt™ are arranged in descending order of the Z-score, the S-score is the difference (also in units of SD's) between the Z-score. S-score therefore represents the relative target specificity of a Monoclonal Antibody to its intended target. A Monoclonal Antibody is considered to specific to its intended target, if the Monoclonal Antibody has an S-score of at least 2.5. For example, if a Monoclonal Antibody binds to protein X with a Z-score of 43 and to protein Y with a Z-score of 14, then the S-score for the binding of that Monoclonal Antibody to protein X is equal to 29.

Protein Array - Anti-YB1 antibody [YBX1/2430] - BSA and Azide free (ab268215)

This data was developed using the same antibody clone in a different buffer formulation containing PBS, BSA and Sodium azide (**ab268094**).

Please note: All products are "FOR RESEARCH USE ONLY. NOT FOR USE IN DIAGNOSTIC PROCEDURES"

Our Abpromise to you: Quality guaranteed and expert technical support

- Replacement or refund for products not performing as stated on the datasheet
- Valid for 12 months from date of delivery
- Response to your inquiry within 24 hours

- We provide support in Chinese, English, French, German, Japanese and Spanish
- Extensive multi-media technical resources to help you
- We investigate all quality concerns to ensure our products perform to the highest standards

If the product does not perform as described on this datasheet, we will offer a refund or replacement. For full details of the Abpromise, please visit <https://www.abcam.com/abpromise> or contact our technical team.

Terms and conditions

- Guarantee only valid for products bought direct from Abcam or one of our authorized distributors