


# Anti-Yes1 antibody ab109744

[3 References](#) [5 Images](#)

## Overview

<b>Product name</b>	Anti-Yes1 antibody
<b>Description</b>	Rabbit polyclonal to Yes1
<b>Host species</b>	Rabbit
<b>Tested applications</b>	<b>Suitable for:</b> WB, IHC-P, ICC/IF
<b>Species reactivity</b>	<b>Reacts with:</b> Mouse, Human <b>Predicted to work with:</b> Rat, Cow, Dog, Zebrafish 
<b>Immunogen</b>	Recombinant Human Yes1 protein.
<b>Positive control</b>	A431 and NIH 3T3 whole cell lysates; Human breast and placenta tissues; HeLa cells
<b>General notes</b>	<p>The Life Science industry has been in the grips of a reproducibility crisis for a number of years. Abcam is leading the way in addressing this with our range of recombinant monoclonal antibodies and knockout edited cell lines for gold-standard validation. Please check that this product meets your needs before purchasing.</p> <p>If you have any questions, special requirements or concerns, please send us an inquiry and/or contact our Support team ahead of purchase. Recommended alternatives for this product can be found below, along with publications, customer reviews and Q&amp;As</p>

## Properties

<b>Form</b>	Liquid
<b>Storage instructions</b>	Shipped at 4°C. Upon delivery aliquot and store at -20°C. Avoid repeated freeze / thaw cycles.
<b>Storage buffer</b>	pH: 7.00 Preservative: 0.01% Thimerosal (merthiolate) Constituents: PBS, 20% Glycerol (glycerin, glycerine)
<b>Purity</b>	Immunogen affinity purified
<b>Clonality</b>	Polyclonal
<b>Isotype</b>	IgG

## Applications

The **Abpromise guarantee** Our **Abpromise guarantee** covers the use of ab109744 in the following tested applications.

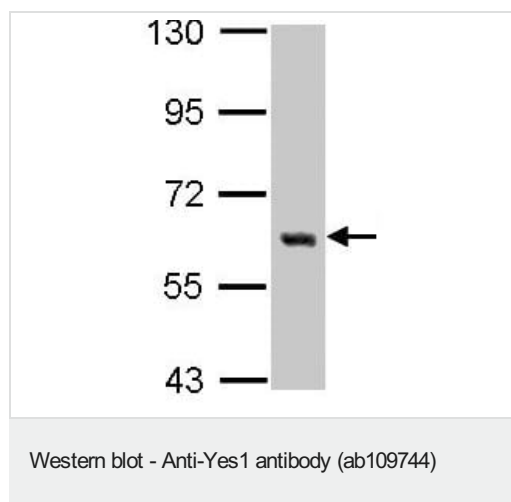
The application notes include recommended starting dilutions; optimal dilutions/concentrations should be determined by the end user.

Application	Abreviews	Notes
WB		1/500 - 1/3000. Predicted molecular weight: 61 kDa.
IHC-P		Use a concentration of 10 µg/ml.
ICC/IF		1/100 - 1/200.

## Target

<b>Function</b>	Promotes infectivity of <i>Neisseria gonorrhoeae</i> in epithelial cells by phosphorylating MCP/CD46.
<b>Sequence similarities</b>	<p>Belongs to the protein kinase superfamily. Tyr protein kinase family. SRC subfamily.</p> <p>Contains 1 protein kinase domain.</p> <p>Contains 1 SH2 domain.</p> <p>Contains 1 SH3 domain.</p>
<b>Post-translational modifications</b>	Autophosphorylated.
<b>Cellular localization</b>	Cytoplasm > cytosol. In epithelial cells infected with <i>Neisseria gonorrhoeae</i> , forms aggregates beneath bacterial microcolonies.
<b>Form</b>	This protein is known to be similar in amino acid sequence to HCK (P08631), LCK (P06239), FYN (P06241), SRC (P12931), and LYN (P07948). Therefore, cross-reactivity with these homologous proteins may be observed. We would be happy to provide immunogen alignment information upon request.

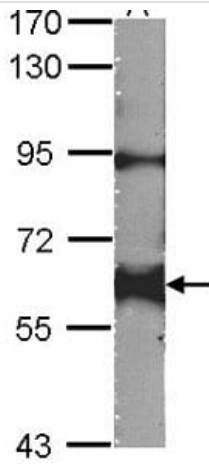
## Images



Anti-Yes1 antibody (ab109744) at 1/1000 dilution + A431 whole cell lysate at 30 µg

**Predicted band size:** 61 kDa

7.5% SDS PAGE

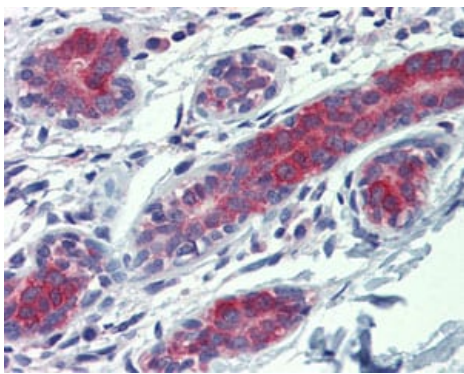


Western blot - Anti-Yes1 antibody (ab109744)

Anti-Yes1 antibody (ab109744) at 1/1000 dilution + NIH 3T3 whole cell lysate at 30 µg

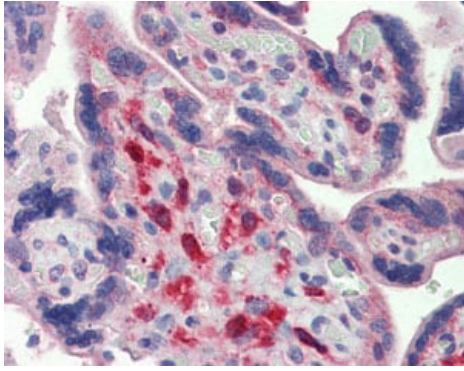
**Predicted band size:** 61 kDa

7.5% SDS PAGE



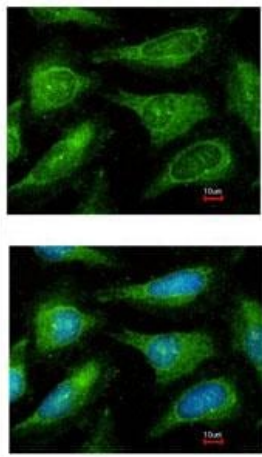
Immunohistochemistry (Formalin/PFA-fixed paraffin-embedded sections) - Anti-Yes1 antibody (ab109744)

ab109744, at 10 µg/ml, staining Yes1 in formalin fixed, paraffin embedded Human breast tissue by Immunohistochemistry.



Immunohistochemistry (Formalin/PFA-fixed paraffin-embedded sections) - Anti-Yes1 antibody (ab109744)

ab109744, at 10 µg/ml, staining Yes1 in formalin fixed, paraffin embedded Human placenta tissue by Immunohistochemistry.



Immunocytochemistry/ Immunofluorescence - Anti-Yes1 antibody (ab109744)

Immunofluorescence analysis of Yes1 in methanol fixed HeLa cell, using ab109744 at a 1/200 dilution.

The upper image was stained with Hoesch 33342

**Please note:** All products are "FOR RESEARCH USE ONLY. NOT FOR USE IN DIAGNOSTIC PROCEDURES"

### Our Abpromise to you: Quality guaranteed and expert technical support

- Replacement or refund for products not performing as stated on the datasheet
- Valid for 12 months from date of delivery
- Response to your inquiry within 24 hours
- We provide support in Chinese, English, French, German, Japanese and Spanish
- Extensive multi-media technical resources to help you
- We investigate all quality concerns to ensure our products perform to the highest standards

If the product does not perform as described on this datasheet, we will offer a refund or replacement. For full details of the Abpromise, please visit <https://www.abcam.com/abpromise> or contact our technical team.

### Terms and conditions

- Guarantee only valid for products bought direct from Abcam or one of our authorized distributors