


Product datasheet

Anti-Yes1 antibody ab152108

3 Images

Overview

Product name	Anti-Yes1 antibody
Description	Rabbit polyclonal to Yes1
Host species	Rabbit
Tested applications	Suitable for: WB, ICC/IF
Species reactivity	Reacts with: Mouse, Human Predicted to work with: Chicken, Cow, Dog, Xenopus laevis, Zebrafish, Xenopus tropicalis 
Immunogen	Recombinant protein fragment corresponding to a region within amino acids 234-531 of Human Yes1
Positive control	293T, A431, H1299, HeLa, HepG2, Raji and NIH 3T3 whole cell lysates, HeLa cells
General notes	<p>The Life Science industry has been in the grips of a reproducibility crisis for a number of years. Abcam is leading the way in addressing this with our range of recombinant monoclonal antibodies and knockout edited cell lines for gold-standard validation. Please check that this product meets your needs before purchasing.</p> <p>If you have any questions, special requirements or concerns, please send us an inquiry and/or contact our Support team ahead of purchase. Recommended alternatives for this product can be found below, along with publications, customer reviews and Q&As</p>

Properties

Form	Liquid
Storage instructions	Shipped at 4°C. Upon delivery aliquot. Store at -20°C or -80°C. Avoid freeze / thaw cycle.
Storage buffer	pH: 7.00 Preservative: 0.01% Thimerosal (merthiolate) Constituents: 79.99% PBS, 20% Glycerol (glycerin, glycerine)
Purity	Immunogen affinity purified
Clonality	Polyclonal
Isotype	IgG

Applications

The Abpromise guarantee

Our **Abpromise guarantee** covers the use of ab152108 in the following tested applications.

The application notes include recommended starting dilutions; optimal dilutions/concentrations should be determined by the end user.

Application	Abreviews	Notes
WB		1/500 - 1/3000. Predicted molecular weight: 60 kDa.
ICC/IF		1/100 - 1/1000.

Target

Function

Promotes infectivity of *Neisseria gonorrhoeae* in epithelial cells by phosphorylating MCP/CD46.

Sequence similarities

Belongs to the protein kinase superfamily. Tyr protein kinase family. SRC subfamily.

Contains 1 protein kinase domain.

Contains 1 SH2 domain.

Contains 1 SH3 domain.

Post-translational modifications

Autophosphorylated.

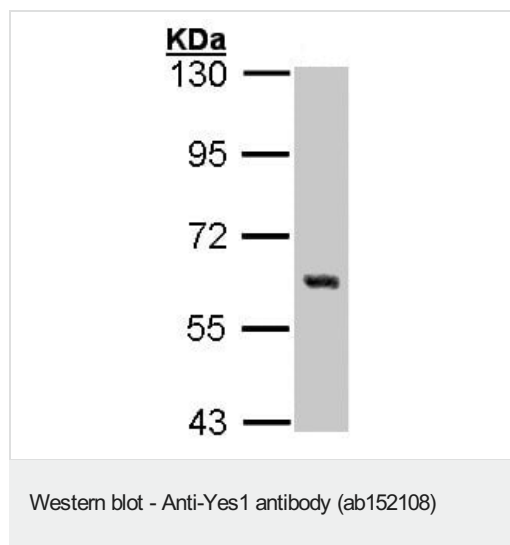
Cellular localization

Cytoplasm > cytosol. In epithelial cells infected with *Neisseria gonorrhoeae*, forms aggregates beneath bacterial microcolonies.

Form

This protein is known to be similar in amino acid sequence to HCK (P08631), LCK (P06239), FYN (P06241), SRC (P12931), and LYN (P07948). Therefore, cross-reactivity with these homologous proteins may be observed. We would be happy to provide immunogen alignment information upon request.

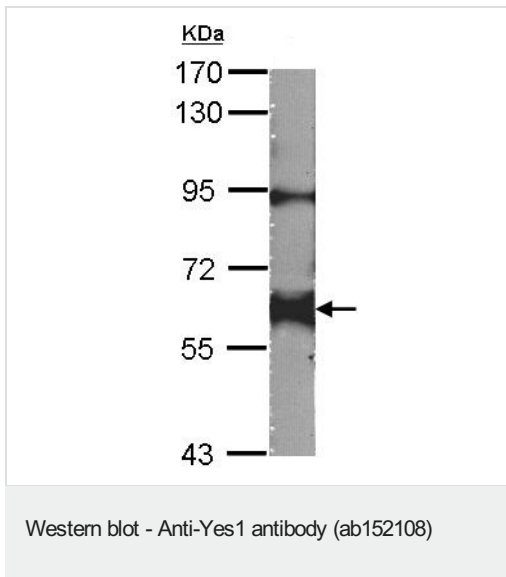
Images



Anti-Yes1 antibody (ab152108) at 1/1000 dilution + A431 whole cell lysate at 30 µg

Predicted band size: 60 kDa

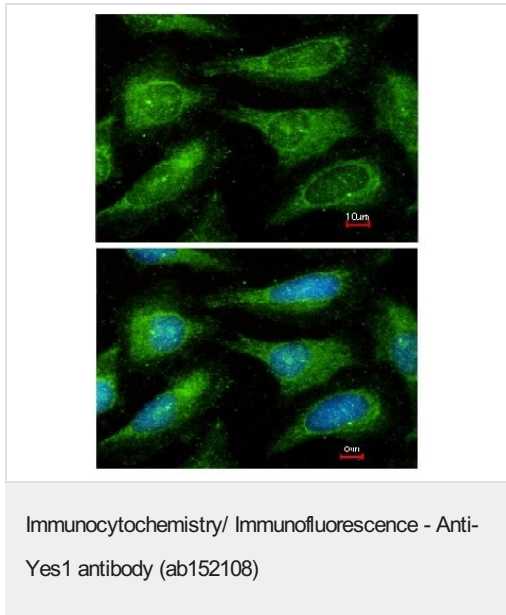
7.5% SDS PAGE



Anti-Yes1 antibody (ab152108) at 1/1000 dilution + NIH 3T3 whole cell lysate at 30 µg

Predicted band size: 60 kDa

7.5% SDS PAGE



Immunofluorescence analysis of methanol-fixed HeLa cells labeling Yes1 using ab152108 at a 1/200 dilution. lower image is costained with hoechst 33342.

Please note: All products are "FOR RESEARCH USE ONLY. NOT FOR USE IN DIAGNOSTIC PROCEDURES"

Our Abpromise to you: Quality guaranteed and expert technical support

- Replacement or refund for products not performing as stated on the datasheet
- Valid for 12 months from date of delivery
- Response to your inquiry within 24 hours
- We provide support in Chinese, English, French, German, Japanese and Spanish
- Extensive multi-media technical resources to help you
- We investigate all quality concerns to ensure our products perform to the highest standards

If the product does not perform as described on this datasheet, we will offer a refund or replacement. For full details of the Abpromise, please visit <https://www.abcam.com/abpromise> or contact our technical team.

Terms and conditions

- Guarantee only valid for products bought direct from Abcam or one of our authorized distributors