

## Product datasheet

# Anti-YL1 antibody ab72506

★★★★★ [1 Abreviews](#) [2 Images](#)

### Overview

---

<b>Product name</b>	Anti-YL1 antibody
<b>Description</b>	Rabbit polyclonal to YL1
<b>Host species</b>	Rabbit
<b>Tested applications</b>	<b>Suitable for:</b> WB, IHC-P
<b>Species reactivity</b>	<b>Reacts with:</b> Mouse, Human
<b>Immunogen</b>	Synthetic peptide derived from an internal region of human YL1
<b>General notes</b>	<p>The Life Science industry has been in the grips of a reproducibility crisis for a number of years. Abcam is leading the way in addressing this with our range of recombinant monoclonal antibodies and knockout edited cell lines for gold-standard validation. Please check that this product meets your needs before purchasing.</p> <p>If you have any questions, special requirements or concerns, please send us an inquiry and/or contact our Support team ahead of purchase. Recommended alternatives for this product can be found below, along with publications, customer reviews and Q&amp;As</p>

### Properties

---

<b>Form</b>	Liquid
<b>Storage instructions</b>	Shipped at 4°C. Upon delivery aliquot and store at -20°C. Avoid freeze / thaw cycles.
<b>Storage buffer</b>	pH: 7.40 Preservative: 0.02% Sodium azide Constituents: 50% Glycerol (glycerin, glycerine), 0.87% Sodium chloride, PBS
	Without Mg <sup>2+</sup> and Ca <sup>2+</sup>
<b>Purity</b>	Immunogen affinity purified
<b>Purification notes</b>	Affinity-purified from rabbit antiserum by affinity-chromatography using epitope-specific immunogen.
<b>Clonality</b>	Polyclonal
<b>Isotype</b>	IgG

### Applications

---

## The Abpromise guarantee

Our **Abpromise guarantee** covers the use of ab72506 in the following tested applications.

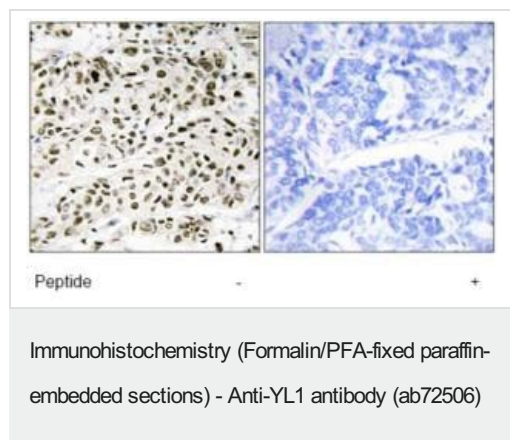
The application notes include recommended starting dilutions; optimal dilutions/concentrations should be determined by the end user.

Application	Abreviews	Notes
WB	★★★★★ (1)	1/500 - 1/1000. Detects a band of approximately 41 kDa (predicted molecular weight: 41 kDa).
IHC-P		Use at an assay dependent concentration.

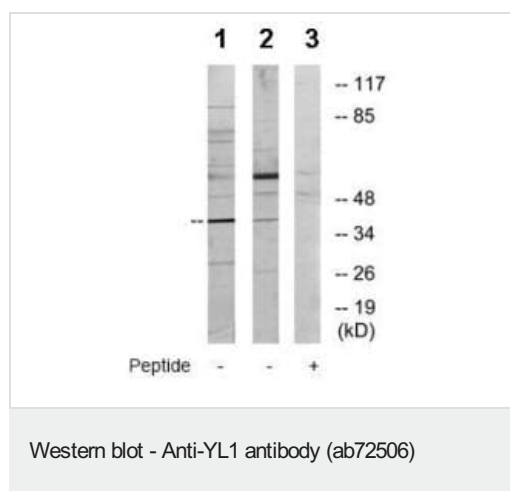
## Target

<b>Function</b>	Could be a DNA-binding transcriptional regulator. May be involved in chromatin modification and remodeling.
<b>Sequence similarities</b>	Belongs to the VPS72/YL1 family.
<b>Post-translational modifications</b>	Phosphorylated upon DNA damage, probably by ATM or ATR.
<b>Cellular localization</b>	Nucleus.

## Images



Immunohistochemical analysis of paraffin-embedded human breast carcinoma tissue using ab72506 at 1/50 dilution. Right panel was also treated with immunising peptide.



**All lanes :** Anti-YL1 antibody (ab72506) at 1/500 dilution

**Lane 1 :** RAW264.7 cell extract

**Lane 2 :** NIH 3T3 cell extract

**Lane 3 :** NIH 3T3 cell extract with immunising peptide at 10 µg

Lysates/proteins at 30 µg per lane.

**Predicted band size:** 41 kDa

**Observed band size:** 41 kDa

**Additional bands at:** 30 kDa, 48 kDa, 50 kDa, 76 kDa, 78 kDa, 87 kDa. We are unsure as to the identity of these extra bands.

**Please note:** All products are "FOR RESEARCH USE ONLY. NOT FOR USE IN DIAGNOSTIC PROCEDURES"

### **Our Abpromise to you: Quality guaranteed and expert technical support**

---

- Replacement or refund for products not performing as stated on the datasheet
- Valid for 12 months from date of delivery
- Response to your inquiry within 24 hours
  
- We provide support in Chinese, English, French, German, Japanese and Spanish
- Extensive multi-media technical resources to help you
- We investigate all quality concerns to ensure our products perform to the highest standards

If the product does not perform as described on this datasheet, we will offer a refund or replacement. For full details of the Abpromise, please visit <https://www.abcam.com/abpromise> or contact our technical team.

### **Terms and conditions**

---

- Guarantee only valid for products bought direct from Abcam or one of our authorized distributors