

## Product datasheet

# Anti-YME1L1 antibody ab234744

[1 References](#) [3 Images](#)

### Overview

---

<b>Product name</b>	Anti-YME1L1 antibody
<b>Description</b>	Rabbit polyclonal to YME1L1
<b>Host species</b>	Rabbit
<b>Tested applications</b>	<b>Suitable for:</b> IHC-P, WB
<b>Species reactivity</b>	<b>Reacts with:</b> Human
<b>Immunogen</b>	Recombinant fragment corresponding to Human YME1L1 aa 1-240. Database link: <a href="#">Q96TA2</a>
<b>Positive control</b>	WB: A549, jurkat, A431, HeLa, HepG2 and MCF7 cell lysates. IHC-P: Human tonsil and colon cancer tissues.
<b>General notes</b>	<p>The Life Science industry has been in the grips of a reproducibility crisis for a number of years. Abcam is leading the way in addressing this with our range of recombinant monoclonal antibodies and knockout edited cell lines for gold-standard validation. Please check that this product meets your needs before purchasing.</p> <p>If you have any questions, special requirements or concerns, please send us an inquiry and/or contact our Support team ahead of purchase. Recommended alternatives for this product can be found below, along with publications, customer reviews and Q&amp;As</p>

### Properties

---

<b>Form</b>	Liquid
<b>Storage instructions</b>	Shipped at 4°C. Store at +4°C short term (1-2 weeks). Upon delivery aliquot. Store at -20°C long term. Avoid freeze / thaw cycle.
<b>Storage buffer</b>	pH: 7.30 Preservative: 0.02% Sodium azide Constituents: PBS, 50% Glycerol (glycerin, glycerine)
<b>Purity</b>	Affinity purified
<b>Clonality</b>	Polyclonal
<b>Isotype</b>	IgG

### Applications

---

## The Abpromise guarantee

Our **Abpromise guarantee** covers the use of ab234744 in the following tested applications.

The application notes include recommended starting dilutions; optimal dilutions/concentrations should be determined by the end user.

Application	Abreviews	Notes
IHC-P		1/20 - 1/200.
WB		1/1000 - 1/5000. Detects a band of approximately 87 kDa (predicted molecular weight: 86 kDa).

## Target

### Function

Putative ATP-dependent protease which plays a role in mitochondrial protein metabolism. Ensures cell proliferation, maintains normal cristae morphology and complex I respiration activity, promotes antiapoptotic activity and protects mitochondria from the accumulation of oxidatively damaged membrane proteins. Requires to control the accumulation of nonassembled respiratory chain subunits (NDUFB6, OX4 and ND1). Seems to act in the processing of OPA1.

### Tissue specificity

High expression in cardiac and skeletal muscle mitochondria.

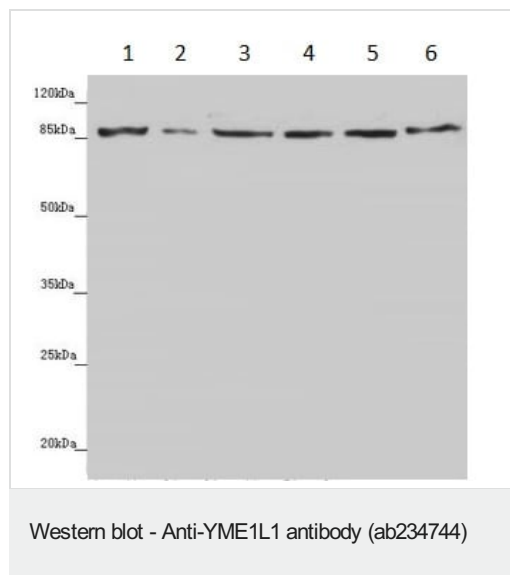
### Sequence similarities

In the N-terminal section; belongs to the AAA ATPase family.  
In the C-terminal section; belongs to the peptidase M41 family.

### Cellular localization

Mitochondrion inner membrane.

## Images



**All lanes** : Anti-YME1L1 antibody (ab234744) at 1/1000 dilution

**Lane 1** : A549 (human lung carcinoma cell line) whole cell lysate

**Lane 2** : Jurkat (human T cell leukemia cell line from peripheral blood) whole cell lysate

**Lane 3** : A431 (human epidermoid carcinoma cell line) whole cell lysate

**Lane 4** : HeLa (human epithelial cell line from cervix adenocarcinoma) whole cell lysate

**Lane 5** : HepG2 (human liver hepatocellular carcinoma cell line) whole cell lysate

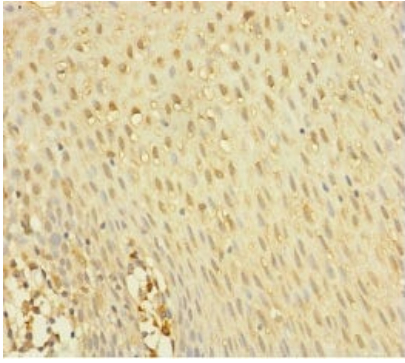
**Lane 6** : MCF7 (human breast adenocarcinoma cell line) whole cell lysate

### Secondary

**All lanes** : Goat polyclonal to rabbit IgG at 1/10000 dilution

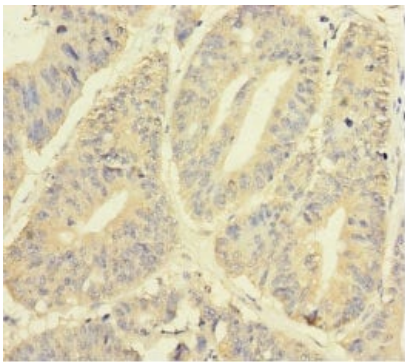
**Predicted band size:** 86 kDa

**Observed band size:** 87 kDa



Immunohistochemistry (Formalin/PFA-fixed paraffin-embedded sections) - Anti-YME1L1 antibody (ab234744)

Paraffin-embedded human tonsil tissue stained for YME1L1 using ab234744 at 1/100 dilution in immunohistochemical analysis.



Immunohistochemistry (Formalin/PFA-fixed paraffin-embedded sections) - Anti-YME1L1 antibody (ab234744)

Paraffin-embedded human colon cancer tissue stained for YME1L1 using ab234744 at 1/100 dilution in immunohistochemical analysis.

**Please note:** All products are "FOR RESEARCH USE ONLY. NOT FOR USE IN DIAGNOSTIC PROCEDURES"

### Our Abpromise to you: Quality guaranteed and expert technical support

---

- Replacement or refund for products not performing as stated on the datasheet
- Valid for 12 months from date of delivery
- Response to your inquiry within 24 hours
- We provide support in Chinese, English, French, German, Japanese and Spanish
- Extensive multi-media technical resources to help you
- We investigate all quality concerns to ensure our products perform to the highest standards

If the product does not perform as described on this datasheet, we will offer a refund or replacement. For full details of the Abpromise, please visit <https://www.abcam.com/abpromise> or contact our technical team.

### Terms and conditions

---

- Guarantee only valid for products bought direct from Abcam or one of our authorized distributors