


Product datasheet

Anti-YTHDC2 antibody ab176846

★★★★☆ [2 Abreviews](#) [10 References](#) [2 Images](#)

Overview

Product name	Anti-YTHDC2 antibody
Description	Rabbit polyclonal to YTHDC2
Host species	Rabbit
Tested applications	Suitable for: WB, IP
Species reactivity	Reacts with: Human Predicted to work with: Chimpanzee, Cynomolgus monkey, Rhesus monkey, Orangutan 
Immunogen	Synthetic peptide within Human YTHDC2 aa 1200-1250. The exact sequence is proprietary. NP_073739.3 Sequence: K SSADTEFSDE CTTAERVLMK SPSPALHPPQ KYKDRGILHP KRGTEDRSDQ Database link: Q9H6S0 Run BLAST with Run BLAST with
Positive control	HeLa and 293T whole cell lysates.
General notes	<p>The Life Science industry has been in the grips of a reproducibility crisis for a number of years. Abcam is leading the way in addressing this with our range of recombinant monoclonal antibodies and knockout edited cell lines for gold-standard validation. Please check that this product meets your needs before purchasing.</p> <p>If you have any questions, special requirements or concerns, please send us an inquiry and/or contact our Support team ahead of purchase. Recommended alternatives for this product can be found below, along with publications, customer reviews and Q&As</p>

Properties

Form	Liquid
Storage instructions	Shipped at 4°C. Store at +4°C short term (1-2 weeks). Upon delivery aliquot. Store at -20°C long term. Avoid freeze / thaw cycle.
Storage buffer	pH: 6.8 Preservative: 0.09% Sodium azide Constituents: 99% Tris buffered saline, 0.1% BSA

Purity	Immunogen affinity purified
Purification notes	ab176846 was affinity purified using an epitope specific to YTHDC2 immobilized on solid support
Clonality	Polyclonal
Isotype	IgG

Applications

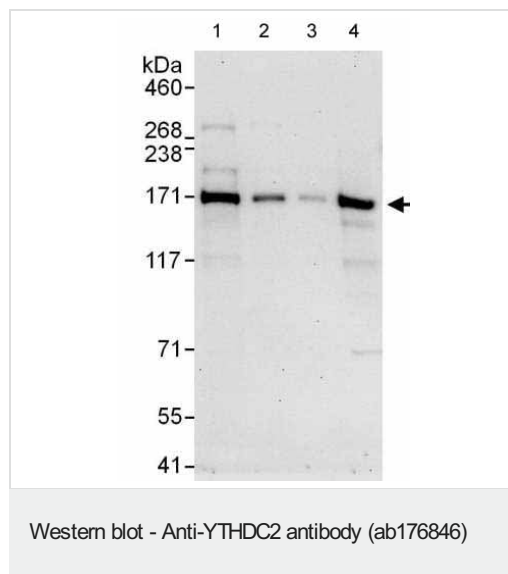
The Abpromise guarantee Our **Abpromise guarantee** covers the use of ab176846 in the following tested applications. The application notes include recommended starting dilutions; optimal dilutions/concentrations should be determined by the end user.

Application	Abreviews	Notes
WB	★★★★★ (1)	1/2000 - 1/10000. Predicted molecular weight: 160 kDa.
IP		Use at 2-5 µg/mg of lysate.

Target

Sequence similarities Belongs to the DEAD box helicase family. DEAH subfamily.
 Contains 2 ANK repeats.
 Contains 1 helicase ATP-binding domain.
 Contains 1 helicase C-terminal domain.
 Contains 1 R3H domain.
 Contains 1 YTH domain.

Images



All lanes : Anti-YTHDC2 antibody (ab176846) at 0.04 µg/ml

Lane 1 : HeLa whole cell lysates at 50 µg

Lane 2 : HeLa whole cell lysates at 15 µg

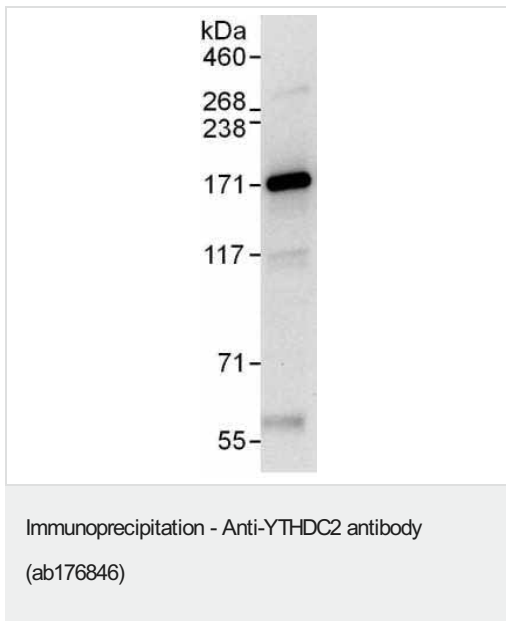
Lane 3 : HeLa whole cell lysates at 5 µg

Lane 4 : 293T whole cell lysates at 50 µg

Developed using the ECL technique.

Predicted band size: 160 kDa

Exposure time: 30 seconds



Detection of YTHDC2 by Western Blot of Immunoprecipitate.
ab176846 at 0.4 µg/ml labeling YTHDC2 in HeLa whole cell lysate
immunoprecipitated using ab176846 at 6 µg/mg lysate (1 mg/IP;
20% of IP loaded/lane).

Detection: Chemiluminescence with exposure time of 10 seconds.

Please note: All products are "FOR RESEARCH USE ONLY. NOT FOR USE IN DIAGNOSTIC PROCEDURES"

Our Abpromise to you: Quality guaranteed and expert technical support

- Replacement or refund for products not performing as stated on the datasheet
- Valid for 12 months from date of delivery
- Response to your inquiry within 24 hours
- We provide support in Chinese, English, French, German, Japanese and Spanish
- Extensive multi-media technical resources to help you
- We investigate all quality concerns to ensure our products perform to the highest standards

If the product does not perform as described on this datasheet, we will offer a refund or replacement. For full details of the Abpromise, please visit <https://www.abcam.com/abpromise> or contact our technical team.

Terms and conditions

- Guarantee only valid for products bought direct from Abcam or one of our authorized distributors