

## Product datasheet

# Anti-YTHDF2 antibody [EPR20318] ab220163

**KO VALIDATED** Recombinant RabMAB

★★★★★ [3 Abreviews](#) [43 References](#) [6 Images](#)

### Overview

<b>Product name</b>	Anti-YTHDF2 antibody [EPR20318]
<b>Description</b>	Rabbit monoclonal [EPR20318] to YTHDF2
<b>Host species</b>	Rabbit
<b>Tested applications</b>	<b>Suitable for:</b> WB, IP <b>Unsuitable for:</b> Flow Cyt, ICC/IF or IHC-P
<b>Species reactivity</b>	<b>Reacts with:</b> Mouse, Rat, Human
<b>Immunogen</b>	Synthetic peptide. This information is proprietary to Abcam and/or its suppliers.
<b>Positive control</b>	WB: Wild-type mESC, HEK-293T, HT-1080 treated with 10µM MG-132 for 4 hours, K562, HEK-293 and HeLa whole cell lysate. Human brain, mouse and rat testis tissue lysate; GST-tagged human YTHDF2 recombinant protein. IP: HepG2 cells
<b>General notes</b>	<p>This product is a recombinant monoclonal antibody, which offers several advantages including:</p> <ul style="list-style-type: none"><li>- High batch-to-batch consistency and reproducibility</li><li>- Improved sensitivity and specificity</li><li>- Long-term security of supply</li><li>- Animal-free production</li></ul> <p>For more information <a href="#">see here</a>.</p> <p>Our RabMAB<sup>®</sup> technology is a patented hybridoma-based technology for making rabbit monoclonal antibodies. For details on our patents, please refer to <a href="#">RabMAB<sup>®</sup> patents</a>.</p>

### Properties

<b>Form</b>	Liquid
<b>Storage instructions</b>	Shipped at 4°C. Store at +4°C short term (1-2 weeks). Upon delivery aliquot. Store at -20°C long term. Avoid freeze / thaw cycle.
<b>Storage buffer</b>	pH: 7.2 Preservative: 0.01% Sodium azide Constituents: PBS, 40% Glycerol (glycerin, glycerine), 0.05% BSA
<b>Purity</b>	Protein A purified
<b>Clonality</b>	Monoclonal
<b>Clone number</b>	EPR20318

Isotype

IgG

## Applications

### The Abpromise guarantee

Our **Abpromise guarantee** covers the use of ab220163 in the following tested applications.

The application notes include recommended starting dilutions; optimal dilutions/concentrations should be determined by the end user.

Application	Abreviews	Notes
WB	★★★★★ (2)	1/1000. Predicted molecular weight: 62 kDa.
IP		1/30.

### Application notes

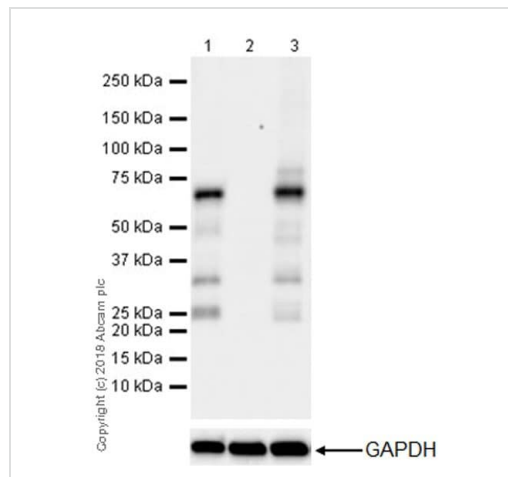
Is unsuitable for Flow Cyt, ICC/IF or IHC-P.

## Target

### Sequence similarities

Contains 1 YTH domain.

## Images



Western blot - Anti-YTHDF2 antibody [EPR20318] (ab220163)

**All lanes** : Anti-YTHDF2 antibody [EPR20318] (ab220163) at 1/1000 dilution

**Lane 1** : Wild-type mESC (mouse embryo stem cell) whole cell lysate

**Lane 2** : YTHDF2 knockout mESC whole cell lysate

**Lane 3** : HeLa (human cervix adenocarcinoma epithelial cell) whole cell lysate

Lysates/proteins at 20 µg per lane.

### Secondary

**All lanes** : Goat Anti-Rabbit IgG H&L (HRP) (**ab97051**) at 1/100000 dilution

**Predicted band size:** 62 kDa

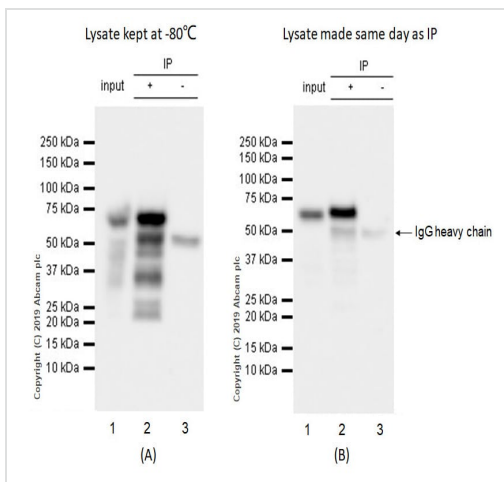
**Exposure time:** 48 seconds

Blocking/Diluting buffer and concentration: 5% NFD/MTBST

The wild-type and YTHDF2 knockout cell lysates were kindly

provided by an anonymous collaborator.

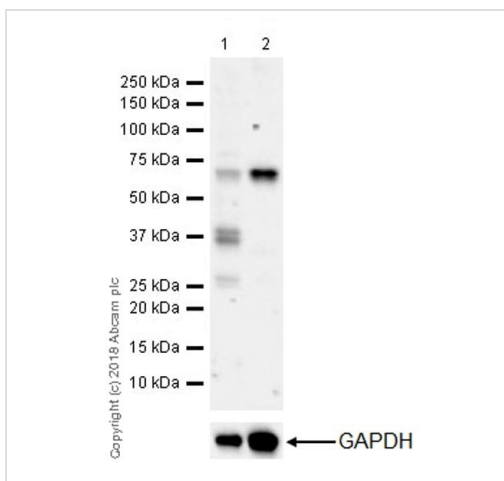
ab220163 was shown to specifically react with YTHDF2 in wild-type mESC cells as signal was lost in YTHDF2 knockout cells. Wild-type and YTHDF2 knockout samples were subjected to SDS-PAGE. ab220163 and **ab181602** (Rabbit anti-GAPDH loading control) were incubated 1 hour at room temperature at 1/1000 dilution and 1/200,000 dilution respectively. Blots were developed with Goat Anti-Rabbit IgG, (H+L), Peroxidase conjugated (**ab97051**) secondary antibody at 1/100,000 dilution for 1 hour at room temperature before imaging. The blot was developed on a BIO-RAD<sup>®</sup> ChemiDoc<sup>™</sup> MP instrument using the ECL technique.



Immunoprecipitation - Anti-YTHDF2 antibody  
[EPR20318] (ab220163)

ab220163 Immunoprecipitating YTHDF2 in human HepG2 whole cell lysate. 10 µg of cell lysate was incubated with primary antibody (1/30). For western blotting ab220163 (1/1000) was used to confirm successful immunoprecipitation. VeriBlot for IP Detection Reagent (HRP) (**ab131366**) was used for detection at (1/5000). For lane 3 Rabbit monoclonal IgG (**ab172730**) was used instead of ab220163.

In panel A, the lysate was stored at -80°C prior to the IP and incubation with the primary antibody was carried out overnight. In panel B, lysate was freshly made and used in the IP test immediately to minimize protein degradation. The incubation time was also shortened from overnight to 2h.



Western blot - Anti-YTHDF2 antibody [EPR20318]  
(ab220163)

**All lanes :** Anti-YTHDF2 antibody [EPR20318] (ab220163) at 1/5000 dilution

**Lane 1 :** Untreated HT-1080 (human fibrosarcoma epithelial cell) whole cell lysate at 20 µg

**Lane 2 :** HT-1080 treated with 10µM MG-132 (**ab141003**) for 4 hours, whole cell lysate at 10 µg

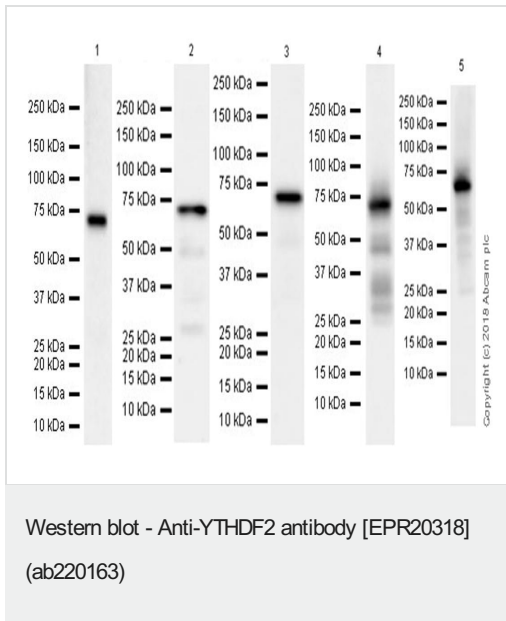
#### Secondary

**All lanes :** Goat Anti-Rabbit IgG H&L (HRP) (**ab97051**) at 1/100000 dilution

**Predicted band size:** 62 kDa

**Exposure time:** 103 seconds

Blocking/diluting buffer and concentration: 5% NFDm/TBST.



**All lanes** : Anti-YTHDF2 antibody [EPR20318] (ab220163) at 1/1000 dilution

**Lane 1** : Human brain tissue lysate

**Lane 2** : Mouse testis tissue lysate

**Lane 3** : Rat testis tissue lysate

**Lane 4** : HEK-293 (human embryonic kidney epithelial cell) whole cell lysate

**Lane 5** : K562 (human chronic myelogenous leukemia lymphoblast) whole cell lysate

Lysates/proteins at 10 µg per lane.

### Secondary

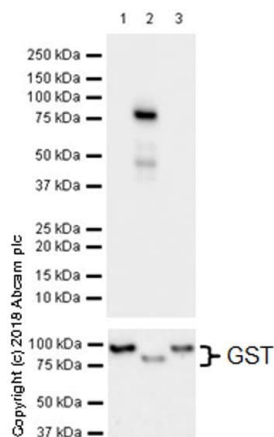
**Lane 1** : VeriBlot for IP Detection Reagent (HRP) ([ab131366](#)) at 1/1000 dilution

**Lanes 2-5** : Goat Anti-Rabbit IgG H&L (HRP) ([ab97051](#)) at 1/100000 dilution

**Predicted band size:** 62 kDa

Blocking/diluting buffer and concentration: 5% NFDm/TBST

Exposure time: Lane 1: 3 minutes; Lane 2: 92 seconds; Lane 3: 37 seconds; Lane 4: 8 seconds; Lane 5: 15 seconds.



Western blot - Anti-YTHDF2 antibody [EPR20318] (ab220163)

**All lanes :** Anti-YTHDF2 antibody [EPR20318] (ab220163) at 1/1000 dilution

**Lane 1 :** GST-tagged human YTHDF1 recombinant protein, 20ng

**Lane 2 :** GST-tagged human YTHDF2 recombinant protein, 20ng

**Lane 3 :** GST-tagged human YTHDF3 recombinant protein, 20ng

**Secondary**

**All lanes :** Goat Anti-Rabbit IgG H&L (HRP) ([ab97051](#)) at 1/100000 dilution





**Predicted band size:** 62 kDa

**Exposure time:** 3 seconds

Blocking/diluting buffer and concentration: 5% NFDm/TBST.

The YTHDF recombinant proteins were kindly provided by an anonymous collaborator.

Why choose a recombinant antibody?

 <p><b>Research with confidence</b> Consistent and reproducible results</p>	 <p><b>Long-term and scalable supply</b> Recombinant technology</p>
 <p><b>Success from the first experiment</b> Confirmed specificity</p>	 <p><b>Ethical standards compliant</b> Animal-free production</p>

Anti-YTHDF2 antibody [EPR20318] (ab220163)

**Please note:** All products are "FOR RESEARCH USE ONLY. NOT FOR USE IN DIAGNOSTIC PROCEDURES"

**Our Abpromise to you: Quality guaranteed and expert technical support**

- Replacement or refund for products not performing as stated on the datasheet
- Valid for 12 months from date of delivery
- Response to your inquiry within 24 hours
- We provide support in Chinese, English, French, German, Japanese and Spanish

- Extensive multi-media technical resources to help you
- We investigate all quality concerns to ensure our products perform to the highest standards

If the product does not perform as described on this datasheet, we will offer a refund or replacement. For full details of the Abpromise, please visit <https://www.abcam.com/abpromise> or contact our technical team.

### **Terms and conditions**

---

- Guarantee only valid for products bought direct from Abcam or one of our authorized distributors