

Anti-ZBTB38 antibody ab231263

1 Image

Overview

Product name	Anti-ZBTB38 antibody
Description	Rabbit polyclonal to ZBTB38
Host species	Rabbit
Tested applications	Suitable for: WB
Species reactivity	Reacts with: Human
Immunogen	Synthetic peptide corresponding to Human ZBTB38 conjugated to keyhole limpet haemocyanin. Three peptides, two from the central part and one from the C-terminal part of the target protein. Database link: Q8NAP3
Positive control	WB: Nuclear extracts of HeLa cells.
General notes	<p>The Life Science industry has been in the grips of a reproducibility crisis for a number of years. Abcam is leading the way in addressing this with our range of recombinant monoclonal antibodies and knockout edited cell lines for gold-standard validation. Please check that this product meets your needs before purchasing.</p> <p>If you have any questions, special requirements or concerns, please send us an inquiry and/or contact our Support team ahead of purchase. Recommended alternatives for this product can be found below, along with publications, customer reviews and Q&As</p>

Properties

Form	Liquid
Storage instructions	Shipped at 4°C. Store at +4°C short term (1-2 weeks). Upon delivery aliquot. Store at -20°C long term. Avoid freeze / thaw cycle.
Storage buffer	Preservative: 0.05% Sodium azide
Purity	Whole antiserum
Clonality	Polyclonal
Isotype	IgG

Applications

The Abpromise guarantee Our **Abpromise guarantee** covers the use of ab231263 in the following tested applications.

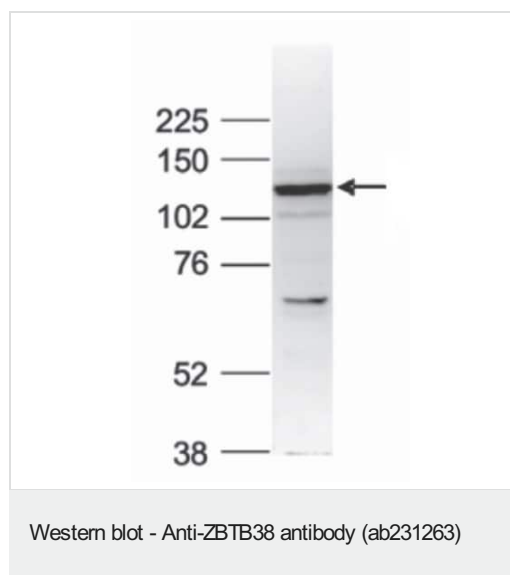
The application notes include recommended starting dilutions; optimal dilutions/concentrations should be determined by the end user.

Application	Abreviews	Notes
WB		1/1000. Predicted molecular weight: 134 kDa.

Target

Function	Acts as a transcriptional activator. May be involved in the differentiation and/or survival of late postmitotic neurons.
Sequence similarities	Contains 1 BTB (POZ) domain. Contains 10 C2H2-type zinc fingers.
Cellular localization	Nucleus.

Images



Anti-ZBTB38 antibody (ab231263) at 1/1000 dilution + Nuclear extracts of HeLa (human epithelial cell line from cervix adenocarcinoma) cells at 40 µg

Predicted band size: 134 kDa

Dilution buffer: TBS-Tween containing 5% skimmed milk.

Please note: All products are "FOR RESEARCH USE ONLY. NOT FOR USE IN DIAGNOSTIC PROCEDURES"

Our Abpromise to you: Quality guaranteed and expert technical support

- Replacement or refund for products not performing as stated on the datasheet
- Valid for 12 months from date of delivery
- Response to your inquiry within 24 hours
- We provide support in Chinese, English, French, German, Japanese and Spanish
- Extensive multi-media technical resources to help you
- We investigate all quality concerns to ensure our products perform to the highest standards

If the product does not perform as described on this datasheet, we will offer a refund or replacement. For full details of the Abpromise, please visit <https://www.abcam.com/abpromise> or contact our technical team.

Terms and conditions

- Guarantee only valid for products bought direct from Abcam or one of our authorized distributors