


Product datasheet

Anti-ZC3H11A antibody ab241612

3 Images

Overview

Product name	Anti-ZC3H11A antibody
Description	Rabbit polyclonal to ZC3H11A
Host species	Rabbit
Tested applications	Suitable for: WB, IP, IHC-P
Species reactivity	Reacts with: Human Predicted to work with: Orangutan 
Immunogen	Synthetic peptide within Human ZC3H11A aa 700-750. The exact sequence is proprietary. (NP_055642.3) Database link: O75152
Positive control	WB: HeLa whole cell lysate. IP: HeLa whole cell lysate. IHC-P: Human prostate carcinoma tissue.
General notes	<p>The Life Science industry has been in the grips of a reproducibility crisis for a number of years. Abcam is leading the way in addressing this with our range of recombinant monoclonal antibodies and knockout edited cell lines for gold-standard validation. Please check that this product meets your needs before purchasing.</p> <p>If you have any questions, special requirements or concerns, please send us an inquiry and/or contact our Support team ahead of purchase. Recommended alternatives for this product can be found below, along with publications, customer reviews and Q&As</p>

Properties

Form	Liquid
Storage instructions	Shipped at 4°C. Store at +4°C short term (1-2 weeks). Upon delivery aliquot. Store at -20°C long term. Avoid freeze / thaw cycle.
Storage buffer	pH: 6.8 Preservative: 0.09% Sodium azide Constituents: 0.1% BSA, Tris buffered saline
Purity	Immunogen affinity purified
Purification notes	Antibody was affinity purified using an epitope specific to ZC3H11A immobilized on solid support.
Clonality	Polyclonal
Isotype	IgG

Applications

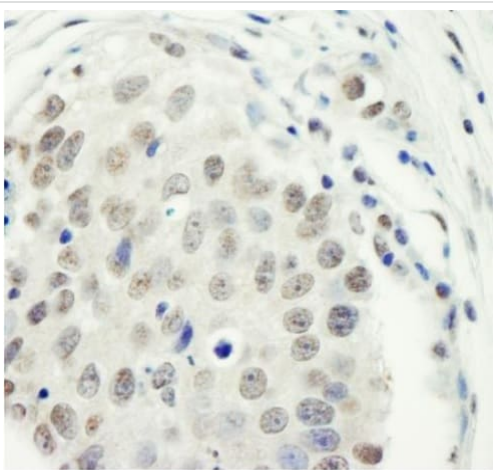
The Abpromise guarantee Our **Abpromise guarantee** covers the use of ab241612 in the following tested applications. The application notes include recommended starting dilutions; optimal dilutions/concentrations should be determined by the end user.

Application	Abreviews	Notes
WB		1/2000 - 1/10000. Predicted molecular weight: 89 kDa.
IP		Use at 2-5 µg/mg of lysate.
IHC-P		1/200 - 1/1000. Perform heat mediated antigen retrieval with citrate buffer pH 6 before commencing with IHC staining protocol.

Target

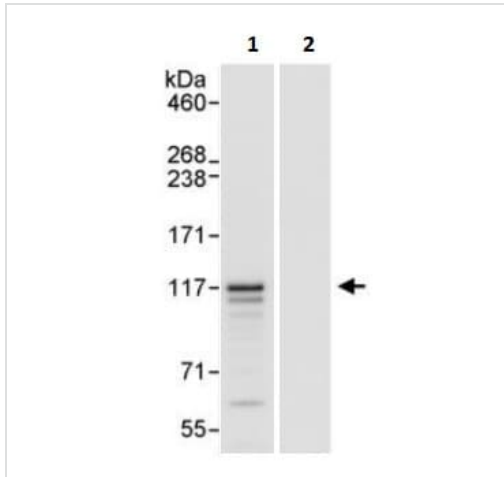
Relevance ZC3H11A, also known as zinc finger CCCH type containing 11A, contains 3 C3H1-type zinc fingers.

Images



Formalin-fixed, paraffin-embedded human prostate carcinoma tissue stained for ZC3H11A using ab241612 at 1/1000 dilution in immunohistochemical analysis. DAB staining.

Immunohistochemistry (Formalin/PFA-fixed paraffin-embedded sections) - Anti-ZC3H11A antibody (ab241612)



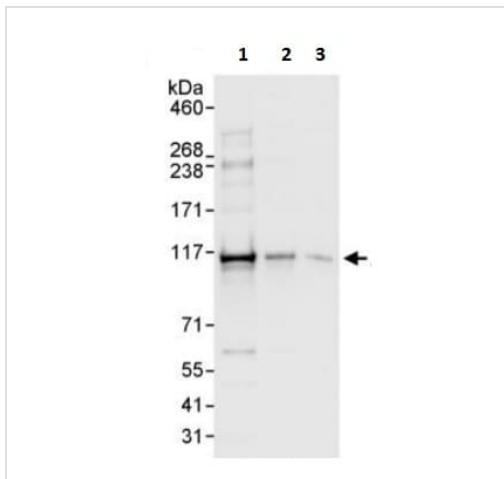
Immunoprecipitation - Anti-ZC3H11A antibody (ab241612)

ZC3H11A was immunoprecipitated from HeLa (human epithelial cell line from cervix adenocarcinoma) whole cell lysate (1 mg for IP, 20% of IP loaded) with ab241612 at 3 µg/mg lysate. Western blot was performed from the immunoprecipitate using ab241612 at 0.1 µg/ml.

Lane 1: ab241612 IP in HeLa whole cell lysate.

Lane 2: Control IgG IP in HeLa whole cell lysate.

Detection: Chemiluminescence with exposure time of 3 seconds.



Western blot - Anti-ZC3H11A antibody (ab241612)

All lanes : Anti-ZC3H11A antibody (ab241612) at 0.04 µg/ml

Lane 1 : HeLa (human epithelial cell line from cervix adenocarcinoma) cell lysate at 50 µg

Lane 2 : HeLa cell lysate at 15 µg

Lane 3 : HeLa cell lysate at 5 µg

Developed using the ECL technique.

Predicted band size: 89 kDa

Exposure time: 3 seconds

Please note: All products are "FOR RESEARCH USE ONLY. NOT FOR USE IN DIAGNOSTIC PROCEDURES"

Our Abpromise to you: Quality guaranteed and expert technical support

- Replacement or refund for products not performing as stated on the datasheet
- Valid for 12 months from date of delivery

- Response to your inquiry within 24 hours
- We provide support in Chinese, English, French, German, Japanese and Spanish
- Extensive multi-media technical resources to help you
- We investigate all quality concerns to ensure our products perform to the highest standards

If the product does not perform as described on this datasheet, we will offer a refund or replacement. For full details of the Abpromise, please visit <https://www.abcam.com/abpromise> or contact our technical team.

Terms and conditions

- Guarantee only valid for products bought direct from Abcam or one of our authorized distributors