


Product datasheet

Anti-ZC3H13 antibody ab70802

★★★★★ [2 Abreviews](#) [5 References](#) [2 Images](#)

Overview

Product name	Anti-ZC3H13 antibody
Description	Rabbit polyclonal to ZC3H13
Host species	Rabbit
Tested applications	Suitable for: IP, WB
Species reactivity	Reacts with: Mouse, Human Predicted to work with: Rabbit, Horse, Cow, Chimpanzee, Rhesus monkey, Gorilla, Orangutan 

Immunogen	Synthetic peptide corresponding to a region between residues 1175 and 1225 of Human ZC3H13 (NP_055885.2)
------------------	--

General notes	<p>The Life Science industry has been in the grips of a reproducibility crisis for a number of years. Abcam is leading the way in addressing this with our range of recombinant monoclonal antibodies and knockout edited cell lines for gold-standard validation. Please check that this product meets your needs before purchasing.</p> <p>If you have any questions, special requirements or concerns, please send us an inquiry and/or contact our Support team ahead of purchase. Recommended alternatives for this product can be found below, along with publications, customer reviews and Q&As</p>
----------------------	---

Properties

Form	Liquid
Storage instructions	Shipped at 4°C. Upon delivery aliquot and store at -20°C. Avoid freeze / thaw cycles.
Storage buffer	pH: 7 Preservative: 0.09% Sodium azide Constituents: 1.815% Tris, 1.764% Sodium citrate, 0.021% PBS
Purity	Immunogen affinity purified
Clonality	Polyclonal
Isotype	IgG

Applications

The Abpromise guarantee

Our **Abpromise guarantee** covers the use of ab70802 in the following tested applications.

The application notes include recommended starting dilutions; optimal dilutions/concentrations should be determined by the end user.

Application	Abreviews	Notes
IP		Use at 2 µg/mg of lysate.
WB	★★★★★ (1)	1/2000 - 1/10000. Detects a band of approximately 240 kDa (predicted molecular weight: 197 kDa).

Target

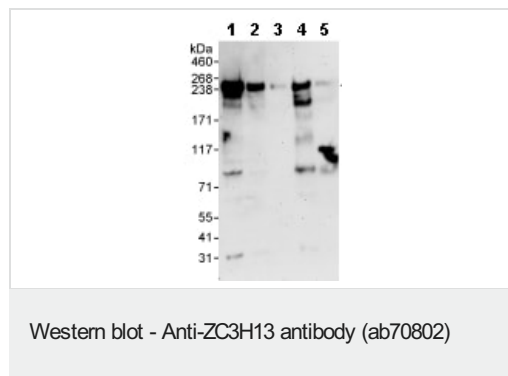
Sequence similarities

Contains 1 C3H1-type zinc finger.

Post-translational modifications

Phosphorylated upon DNA damage, probably by ATM or ATR.

Images



All lanes : Anti-ZC3H13 antibody (ab70802) at 0.04 µg/ml

Lane 1 : HeLa whole cell lysate at 50 µg

Lane 2 : HeLa whole cell lysate at 15 µg

Lane 3 : HeLa whole cell lysate at 5 µg

Lane 4 : 293T whole cell lysate at 50 µg

Lane 5 : NIH3T3 whole cell lysate at 50 µg

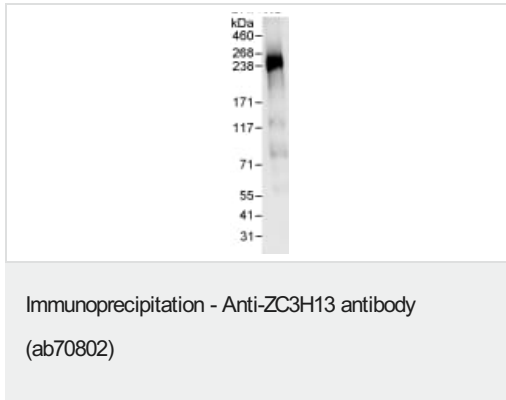
Developed using the ECL technique.

Predicted band size: 197 kDa

Observed band size: 240 kDa

Additional bands at: 200 kDa, 85 kDa. We are unsure as to the identity of these extra bands.

Exposure time: 3 minutes



Detection of ZC3H13 by Western Blot of Immunoprecipitate.
ab70802 at 1 µg/ml staining ZC3H13 in HeLa whole cell lysate
previously immunoprecipitated using ab70802 at 3 µg/mg lysate (1
mg/IP; 20% of IP loaded/lane).
Detection: chemiluminescence with exposure time of 30 seconds.

Please note: All products are "FOR RESEARCH USE ONLY. NOT FOR USE IN DIAGNOSTIC PROCEDURES"

Our Abpromise to you: Quality guaranteed and expert technical support

- Replacement or refund for products not performing as stated on the datasheet
- Valid for 12 months from date of delivery
- Response to your inquiry within 24 hours
- We provide support in Chinese, English, French, German, Japanese and Spanish
- Extensive multi-media technical resources to help you
- We investigate all quality concerns to ensure our products perform to the highest standards

If the product does not perform as described on this datasheet, we will offer a refund or replacement. For full details of the Abpromise, please visit <https://www.abcam.com/abpromise> or contact our technical team.

Terms and conditions

- Guarantee only valid for products bought direct from Abcam or one of our authorized distributors