



Product datasheet

Anti-ZDHHC1 antibody ab223042

[1 References](#) [3 Images](#)

Overview

Product name	Anti-ZDHHC1 antibody
Description	Rabbit polyclonal to ZDHHC1
Host species	Rabbit
Tested applications	Suitable for: WB, IHC-P, ICC/IF
Species reactivity	Reacts with: Mouse, Human
Immunogen	Recombinant fragment corresponding to Human ZDHHC1 aa 250-400. Database link: Q8WTX9
	 Run BLAST with  Run BLAST with
Positive control	WB: Mouse spleen tissue lysate. IHC-P: Human prostate cancer tissue. ICC/IF: A549 cells.
General notes	<p>The Life Science industry has been in the grips of a reproducibility crisis for a number of years. Abcam is leading the way in addressing this with our range of recombinant monoclonal antibodies and knockout edited cell lines for gold-standard validation. Please check that this product meets your needs before purchasing.</p> <p>If you have any questions, special requirements or concerns, please send us an inquiry and/or contact our Support team ahead of purchase. Recommended alternatives for this product can be found below, along with publications, customer reviews and Q&As</p>

Properties

Form	Liquid
Storage instructions	Shipped at 4°C. Store at +4°C short term (1-2 weeks). Upon delivery aliquot. Store at -20°C long term. Avoid freeze / thaw cycle.
Storage buffer	pH: 7.40 Preservative: 0.03% Proclin 300 Constituents: 50% Glycerol (glycerin, glycerine), PBS
Purity	Protein G purified
Purification notes	Purity >95%
Clonality	Polyclonal
Isotype	IgG

Applications

The Abpromise guarantee

Our **Abpromise guarantee** covers the use of ab223042 in the following tested applications.

The application notes include recommended starting dilutions; optimal dilutions/concentrations should be determined by the end user.

Application	Abreviews	Notes
WB		1/1000 - 1/5000. Predicted molecular weight: 55 kDa.
IHC-P		1/20 - 1/200.
ICC/IF		1/50 - 1/200.

Target

Tissue specificity

Expressed at high levels in fetal lung, kidney and heart. Expressed at lower levels in adult pancreas and lung.

Sequence similarities

Belongs to the DHHC palmitoyltransferase family.
Contains 1 DHHC-type zinc finger.

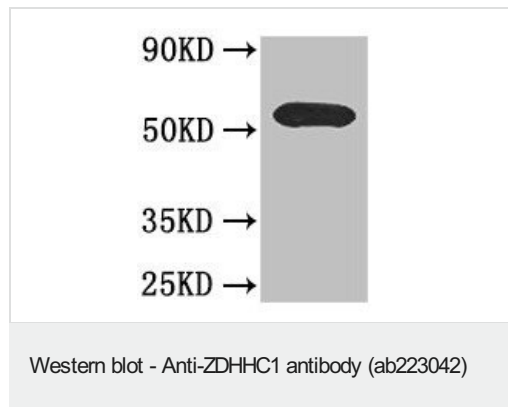
Domain

The DHHC domain is required for palmitoyltransferase activity.

Cellular localization

Membrane.

Images



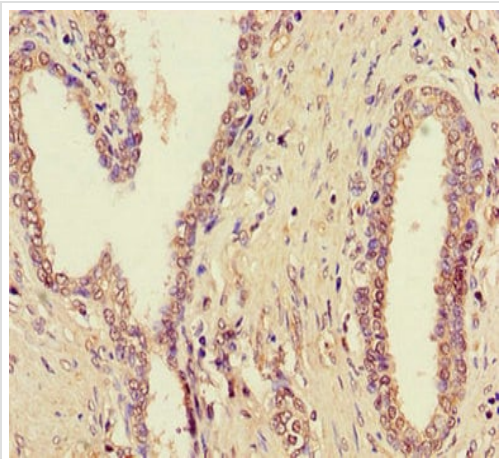
Anti-ZDHHC1 antibody (ab223042) at 1/1000 dilution + Mouse spleen tissue lysate

Secondary

Goat Anti-Rabbit IgG at 1/50000 dilution

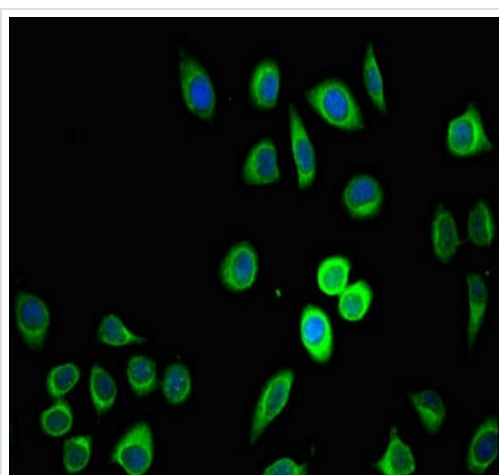
Predicted band size: 55 kDa

Observed band size: 55 kDa



Immunohistochemistry (Formalin/PFA-fixed paraffin-embedded sections) - Anti-ZDHHC1 antibody (ab223042)

Paraffin-embedded human prostate cancer tissue stained for ZDHHC1 using ab223042 at 1/100 dilution in immunohistochemical analysis.



Immunocytochemistry/ Immunofluorescence - Anti-ZDHHC1 antibody (ab223042)

A549 (human lung carcinoma cell line) cells stained for ZDHHC1 (green) using ab223042 at 1/100 dilution in ICC/IF. Secondary: Alexa Fluor 488-conjugated Goat Anti-Rabbit IgG(H+L).

Please note: All products are "FOR RESEARCH USE ONLY. NOT FOR USE IN DIAGNOSTIC PROCEDURES"

Our Abpromise to you: Quality guaranteed and expert technical support

- Replacement or refund for products not performing as stated on the datasheet
- Valid for 12 months from date of delivery
- Response to your inquiry within 24 hours
- We provide support in Chinese, English, French, German, Japanese and Spanish
- Extensive multi-media technical resources to help you
- We investigate all quality concerns to ensure our products perform to the highest standards

If the product does not perform as described on this datasheet, we will offer a refund or replacement. For full details of the Abpromise, please visit <https://www.abcam.com/abpromise> or contact our technical team.

Terms and conditions

- Guarantee only valid for products bought direct from Abcam or one of our authorized distributors