




## Product datasheet

# Anti-ZDHHC13 antibody ab28759

[2 References](#) [1 Image](#)

### Overview

<b>Product name</b>	Anti-ZDHHC13 antibody
<b>Description</b>	Goat polyclonal to ZDHHC13
<b>Host species</b>	Goat
<b>Specificity</b>	This antibody is expected to recognise both reported isoforms (as represented by NP_061901 and NP_001001483).
<b>Tested applications</b>	<b>Suitable for:</b> WB
<b>Species reactivity</b>	<b>Reacts with:</b> Human <b>Predicted to work with:</b> Mouse, Rat 
<b>Immunogen</b>	Synthetic peptide: (C)FHPAREKVLRSV , corresponding to C terminal amino acids 611-622 of Human ZDHHC13 Peptide is available as <a href="#">ab45682 - ZDHHC13 peptide (611-622)</a>  <a href="#">Run BLAST with</a>  <a href="#">Run BLAST with</a>
<b>General notes</b>	<p>The Life Science industry has been in the grips of a reproducibility crisis for a number of years. Abcam is leading the way in addressing this with our range of recombinant monoclonal antibodies and knockout edited cell lines for gold-standard validation. Please check that this product meets your needs before purchasing.</p> <p>If you have any questions, special requirements or concerns, please send us an inquiry and/or contact our Support team ahead of purchase. Recommended alternatives for this product can be found below, along with publications, customer reviews and Q&amp;As</p>

### Properties

<b>Form</b>	Liquid
<b>Storage instructions</b>	Shipped at 4°C. Upon delivery aliquot and store at -20°C or -80°C. Avoid repeated freeze / thaw cycles.
<b>Storage buffer</b>	pH: 7.30 Preservative: 0.02% Sodium azide Constituents: 0.5% Tris, 0.5% BSA
<b>Purity</b>	Immunogen affinity purified
<b>Purification notes</b>	This antibody was purified from goat serum by ammonium sulphate precipitation followed by

antigen affinity chromatography using the immunizing peptide.

**Clonality**

Polyclonal

**Isotype**

IgG

**Applications**

**The Abpromise guarantee**

Our **Abpromise guarantee** covers the use of ab28759 in the following tested applications.

The application notes include recommended starting dilutions; optimal dilutions/concentrations should be determined by the end user.

Application	Abreviews	Notes
WB		

**Application notes**

WB: Use at a concentration of 0.1 - 3 µg/ml.

This antibody gave a positive result in ELISA against the immunizing peptide.

Antibody detection limit dilution 1:32,000.

Not yet tested in other applications.

Optimal dilutions/concentrations should be determined by the end user.

**Target**

**Function**

Palmitoyltransferase for HD and GAD2 (By similarity). Mediates Mg(2+) transport.

**Sequence similarities**

Belongs to the DHHC palmitoyltransferase family. AKR/ZDHHC17 subfamily.

Contains 6 ANK repeats.

Contains 1 DHHC-type zinc finger.

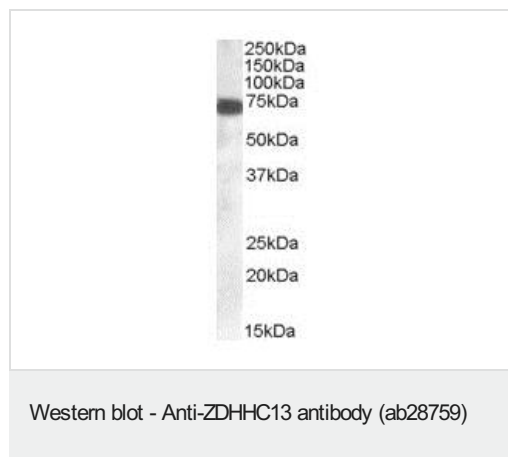
**Domain**

The DHHC domain is required for palmitoyltransferase activity.

**Cellular localization**

Golgi apparatus membrane. Cytoplasmic vesicle membrane. Low extracellular Mg(2+) induces increase in Golgi and in post-Golgi vesicles.

**Images**



Anti-ZDHHC13 antibody (ab28759) at 0.1 µg/ml + Human cerebellum lysate at 35 µg

Developed using the ECL technique.

Primary antibody was incubated for 1 hour.

**Please note:** All products are "FOR RESEARCH USE ONLY. NOT FOR USE IN DIAGNOSTIC PROCEDURES"

### **Our Abpromise to you: Quality guaranteed and expert technical support**

---

- Replacement or refund for products not performing as stated on the datasheet
- Valid for 12 months from date of delivery
- Response to your inquiry within 24 hours
  
- We provide support in Chinese, English, French, German, Japanese and Spanish
- Extensive multi-media technical resources to help you
- We investigate all quality concerns to ensure our products perform to the highest standards

If the product does not perform as described on this datasheet, we will offer a refund or replacement. For full details of the Abpromise, please visit <https://www.abcam.com/abpromise> or contact our technical team.

### **Terms and conditions**

---

- Guarantee only valid for products bought direct from Abcam or one of our authorized distributors