



Product datasheet

Anti-ZDHHC4/DC1 antibody ab235369

[1 References](#) [4 Images](#)

Overview

| | |
|----------------------------|---|
| Product name | Anti-ZDHHC4/DC1 antibody |
| Description | Rabbit polyclonal to ZDHHC4/DC1 |
| Host species | Rabbit |
| Tested applications | Suitable for: WB, IHC-P |
| Species reactivity | Reacts with: Mouse, Human |
| Immunogen | Recombinant fragment corresponding to Human ZDHHC4/DC1 aa 250 to the C-terminus. Database link: Q9NPG8 <div>  Run BLAST with  Run BLAST with </div> |
| Positive control | WB: Mouse liver tissue lysate. IHC-P: Human pancreatic, kidney and liver cancer tissues. |
| General notes | <p>The Life Science industry has been in the grips of a reproducibility crisis for a number of years. Abcam is leading the way in addressing this with our range of recombinant monoclonal antibodies and knockout edited cell lines for gold-standard validation. Please check that this product meets your needs before purchasing.</p> <p>If you have any questions, special requirements or concerns, please send us an inquiry and/or contact our Support team ahead of purchase. Recommended alternatives for this product can be found below, along with publications, customer reviews and Q&As</p> |

Properties

| | |
|-----------------------------|---|
| Form | Liquid |
| Storage instructions | Shipped at 4°C. Store at +4°C short term (1-2 weeks). Upon delivery aliquot. Store at -20°C long term. Avoid freeze / thaw cycle. |
| Storage buffer | pH: 7.40 Preservative: 0.03% Proclin 300 Constituents: 50% Glycerol (glycerin, glycerine), PBS |
| Purity | Protein G purified |
| Purification notes | Purity >95%. |
| Clonality | Polyclonal |
| Isotype | IgG |

Applications

The Abpromise guarantee

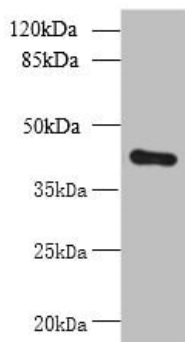
Our **Abpromise guarantee** covers the use of ab235369 in the following tested applications.

The application notes include recommended starting dilutions; optimal dilutions/concentrations should be determined by the end user.

| Application | Abreviews | Notes |
|-------------|-----------|---|
| WB | | 1/500 - 1/2000. Predicted molecular weight: 40 kDa. |
| IHC-P | | 1/20 - 1/200. |

Target

Images



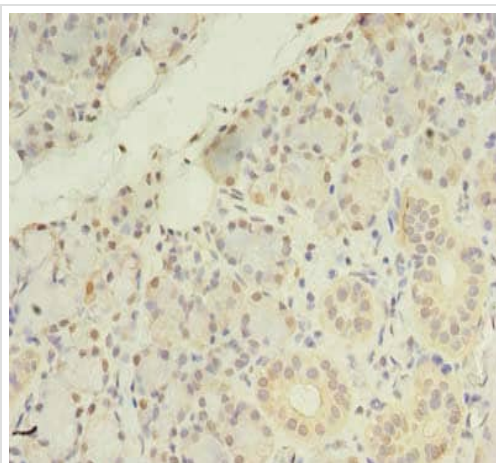
Western blot - Anti-ZDHHC4/DC1 antibody
(ab235369)

Mouse liver tissue lysate

Secondary

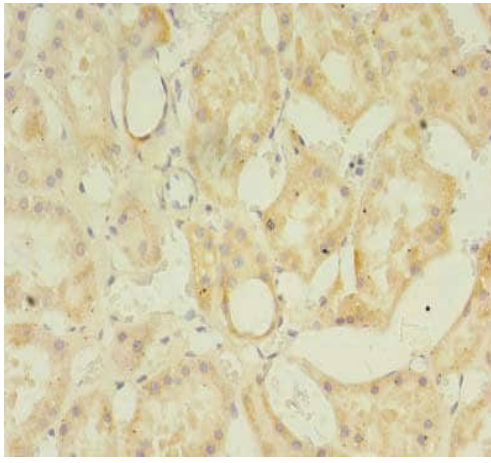
Goat polyclonal to rabbit IgG at 1/10000 dilution

Predicted band size: 40 kDa



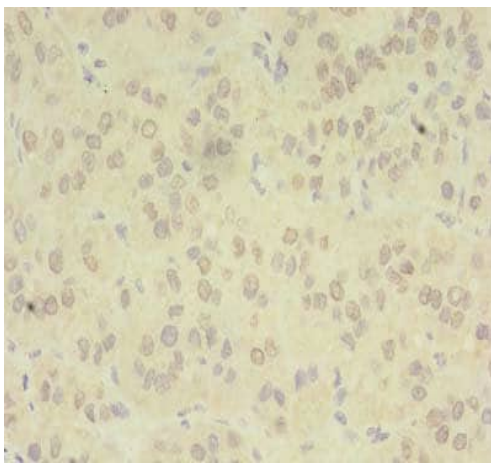
Immunohistochemistry (Formalin/PFA-fixed paraffin-embedded sections) - Anti-ZDHHC4/DC1 antibody
(ab235369)

Paraffin-embedded human pancreatic tissue stained for ZDHHC4/DC1 using ab235369 at 1/100 dilution in immunohistochemical analysis.



Immunohistochemistry (Formalin/PFA-fixed paraffin-embedded sections) - Anti-ZDHHC4/DC1 antibody (ab235369)

Paraffin-embedded human kidney tissue stained for ZDHHC4/DC1 using ab235369 at 1/100 dilution in immunohistochemical analysis.



Immunohistochemistry (Formalin/PFA-fixed paraffin-embedded sections) - Anti-ZDHHC4/DC1 antibody (ab235369)

Paraffin-embedded human liver cancer tissue stained for ZDHHC4/DC1 using ab235369 at 1/100 dilution in immunohistochemical analysis.

Please note: All products are "FOR RESEARCH USE ONLY. NOT FOR USE IN DIAGNOSTIC PROCEDURES"

Our Abpromise to you: Quality guaranteed and expert technical support

- Replacement or refund for products not performing as stated on the datasheet
- Valid for 12 months from date of delivery
- Response to your inquiry within 24 hours
- We provide support in Chinese, English, French, German, Japanese and Spanish
- Extensive multi-media technical resources to help you
- We investigate all quality concerns to ensure our products perform to the highest standards

If the product does not perform as described on this datasheet, we will offer a refund or replacement. For full details of the Abpromise, please visit <https://www.abcam.com/abpromise> or contact our technical team.

Terms and conditions

- Guarantee only valid for products bought direct from Abcam or one of our authorized distributors