

Anti-ZEB1 antibody ab155249

[12 References](#) [4 Images](#)

Overview

Product name	Anti-ZEB1 antibody
Description	Rabbit polyclonal to ZEB1
Host species	Rabbit
Tested applications	Suitable for: ChIP, IP, WB, ICC/IF
Species reactivity	Reacts with: Mouse, Human
Immunogen	Recombinant fragment corresponding to Human ZEB1 aa 254-586 (internal sequence). Database link: P37275
Positive control	ChIP: HeLa cell chromatin extract. WB: Neuro-2a, C8-D30, NIH/3T3, RAW 264.7 and C2C12 whole cell lysate. ICC/IF: HeLa cells. IP: HEK-293T cells.
General notes	<p>The Life Science industry has been in the grips of a reproducibility crisis for a number of years. Abcam is leading the way in addressing this with our range of recombinant monoclonal antibodies and knockout edited cell lines for gold-standard validation. Please check that this product meets your needs before purchasing.</p> <p>If you have any questions, special requirements or concerns, please send us an inquiry and/or contact our Support team ahead of purchase. Recommended alternatives for this product can be found below, along with publications, customer reviews and Q&As</p>

Properties

Form	Liquid
Storage instructions	Shipped at 4°C. Store at +4°C short term (1-2 weeks). Upon delivery aliquot. Store at -20°C. Avoid freeze / thaw cycle.
Storage buffer	pH: 7.00 Preservative: 0.025% Proclin 300 Constituents: 79% PBS, 20% Glycerol (glycerin, glycerine)
Purity	Immunogen affinity purified
Clonality	Polyclonal
Isotype	IgG

Applications

The Abpromise guarantee

Our **Abpromise guarantee** covers the use of ab155249 in the following tested applications.

The application notes include recommended starting dilutions; optimal dilutions/concentrations should be determined by the end user.

Application	Abreviews	Notes
ChIP		Use at an assay dependent concentration.
IP		1/100 - 1/500.
WB		1/500 - 1/3000. Predicted molecular weight: 124 kDa.
ICC/IF		1/100 - 1/1000.

Target

Function

Inhibits interleukin-2 (IL-2) gene expression. May be responsible for transcriptional repression of the IL-2 gene. Enhances or represses the promoter activity of the ATP1A1 gene depending on the quantity of cDNA and on the cell type. Represses E-cadherin promoter and induces an epithelial-mesenchymal transition (EMT) by recruiting SMARCA4/BRG1. Represses BCL6 transcription in the presence of the corepressor CTBP1. Promotes tumorigenicity by repressing stemness-inhibiting microRNAs.

Tissue specificity

Colocalizes with SMARCA4/BRG1 in E-cadherin-negative cells from established lines, and stroma of normal colon as well as in de-differentiated epithelial cells at the invasion front of colorectal carcinomas (at protein level). Expressed in heart and skeletal muscle, but not in liver, spleen, or pancreas.

Involvement in disease

Defects in ZEB1 are the cause of posterior polymorphous corneal dystrophy type 3 (PPCD3) [MIM:609141]. PPCD is a rare disease involving metaplasia and overgrowth of corneal endothelial cells. In patients with PPCD, these cells manifest in an epithelial morphology and gene expression pattern, produce an aberrant basement membrane, and, sometimes, spread over the iris and nearby structures in a way that increases the risk for glaucoma.

Defects in ZEB1 are the cause of corneal dystrophy Fuchs endothelial type 6 (FECD6) [MIM:613270]. It is an ocular disorder caused by loss of endothelium of the central cornea. It is characterized by focal wart-like guttata that arise from Descemet membrane and develop in the central cornea, epithelial blisters, reduced vision and pain. Descemet membrane is thickened by abnormal collagenous deposition.

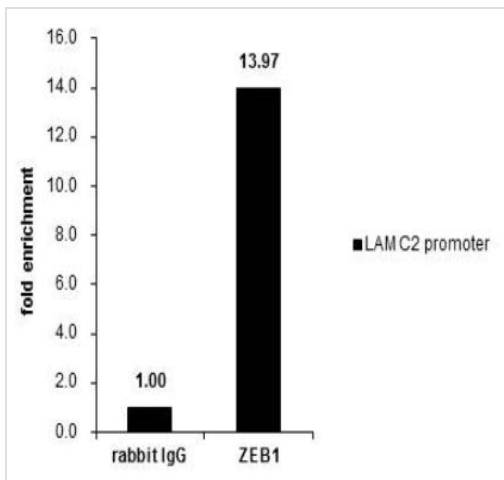
Sequence similarities

Belongs to the delta-EF1/ZFH-1 C2H2-type zinc-finger family.
Contains 7 C2H2-type zinc fingers.
Contains 1 homeobox DNA-binding domain.

Cellular localization

Nucleus.

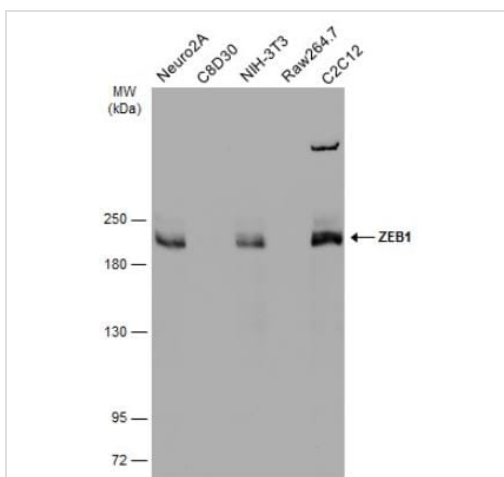
Images



ChIP - Anti-ZEB1 antibody (ab155249)

Cross-linked ChIP was performed with HeLa chromatin extract and 5 µg of either control rabbit IgG or ab155249. The precipitated DNA was detected by PCR with primer set targeting to LAMC2 promotor.

ChIP experiment and primer designs are based on Proc Natl Acad Sci U S A. 2011 Nov 29;108(48):19204-9.



Western blot - Anti-ZEB1 antibody (ab155249)

All lanes : Anti-ZEB1 antibody (ab155249) at 1/1000 dilution

Lane 1 : Neuro-2a (mouse neuroblastoma cell line) whole cell lysate

Lane 2 : C8-D30 (mouse astrocyte type III cerebellum cell line) whole cell lysate

Lane 3 : NIH/3T3 (mouse embryo fibroblast cell line) whole cell lysate

Lane 4 : RAW 264.7 (mouse macrophage cell line transformed with Abelson murine leukemia virus) whole cell lysate

Lane 5 : C2C12 (mouse myoblast cell line) whole cell lysate

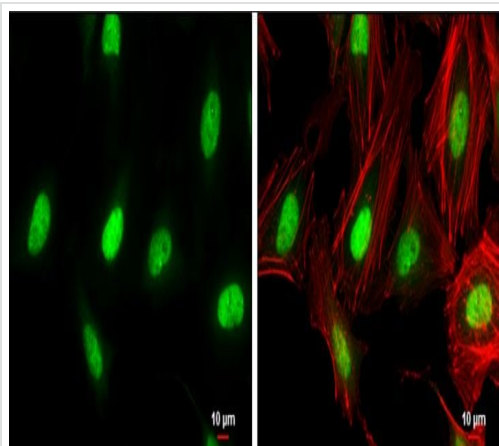
Lysates/proteins at 30 µg per lane.

Secondary

All lanes : HRP-conjugated anti-rabbit IgG antibody

Predicted band size: 124 kDa

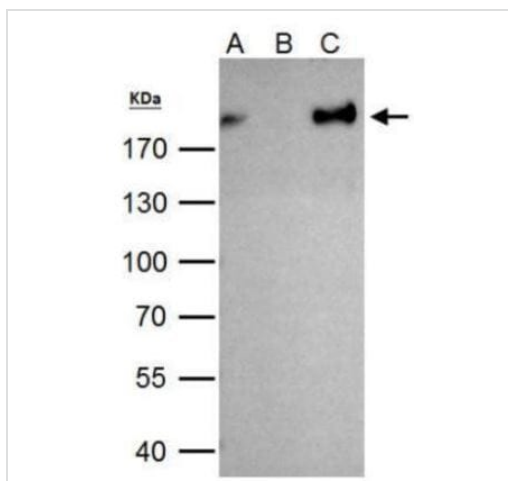
5% SDS-PAGE



Immunocytochemistry/ Immunofluorescence - Anti-ZEB1 antibody (ab155249)

Immunofluorescence analysis of 4% paraformaldehyde fixed (RT for 15 min) HeLa (human epithelial cell line from cervix adenocarcinoma) cells labelling ZEB1 at nucleus (green) with ab155249 at 1/500 dilution. Red: Phalloidin, a cytoskeleton marker, at 1/100 dilution.

Scale bar = 10 μ m.



Immunoprecipitation - Anti-ZEB1 antibody (ab155249)

IP Sample: HEK-293T (human epithelial cell line from embryonic kidney transformed with large T antigen) whole cell lysate.

A - 40 μ g of HEK-293T whole cell lysate.

B - Control with 2 μ g of preimmune rabbit IgG.

C - Immunoprecipitation of ZEB1 protein by 2 μ g of ab155249.

The immunoprecipitated ZEB1 protein was detected by ab155249 diluted at 1:1000, followed by anti-rabbit IgG.

7.5% SDS-PAGE

Please note: All products are "FOR RESEARCH USE ONLY. NOT FOR USE IN DIAGNOSTIC PROCEDURES"

Our Abpromise to you: Quality guaranteed and expert technical support

- Replacement or refund for products not performing as stated on the datasheet
- Valid for 12 months from date of delivery
- Response to your inquiry within 24 hours
- We provide support in Chinese, English, French, German, Japanese and Spanish
- Extensive multi-media technical resources to help you
- We investigate all quality concerns to ensure our products perform to the highest standards

If the product does not perform as described on this datasheet, we will offer a refund or replacement. For full details of the Abpromise,

please visit <https://www.abcam.com/abpromise> or contact our technical team.

Terms and conditions

- Guarantee only valid for products bought direct from Abcam or one of our authorized distributors