

## Product datasheet

# Anti-Zebrafish Gut Secretory Cell Epitopes antibody [FIS 2F11/2] ab71286

[30 References](#)   [1 Image](#)

### Overview

<b>Product name</b>	Anti-Zebrafish Gut Secretory Cell Epitopes antibody [FIS 2F11/2]
<b>Description</b>	Mouse monoclonal [FIS 2F11/2] to Zebrafish Gut Secretory Cell Epitopes
<b>Host species</b>	Mouse
<b>Tested applications</b>	<b>Suitable for:</b> IHC-P
<b>Species reactivity</b>	<b>Reacts with:</b> Zebrafish
<b>Immunogen</b>	Tissue, cells or virus corresponding to Zebrafish Zebrafish Gut Secretory Cell Epitopes. Tissue/cell preparation: Lysate of zebrafish intestine.
<b>Positive control</b>	IHC: Zebrafish Larvae (5 days)
<b>General notes</b>	<p>This antibody clone is manufactured by Abcam. If you require a custom buffer formulation or conjugation for your experiments, please contact <a href="mailto:orders@abcam.com">orders@abcam.com</a>.</p> <p>The Life Science industry has been in the grips of a reproducibility crisis for a number of years. Abcam is leading the way in addressing this with our range of recombinant monoclonal antibodies and knockout edited cell lines for gold-standard validation. Please check that this product meets your needs before purchasing.</p> <p>If you have any questions, special requirements or concerns, please send us an inquiry and/or contact our Support team ahead of purchase. Recommended alternatives for this product can be found below, along with publications, customer reviews and Q&amp;As</p>

### Properties

<b>Form</b>	Liquid
<b>Storage instructions</b>	Shipped at 4°C. Store at +4°C short term (1-2 weeks). Upon delivery aliquot. Store at -20°C long term. Avoid freeze / thaw cycle.
<b>Storage buffer</b>	Preservative: 0.02% Sodium azide Constituent: 99.98% PBS
<b>Purity</b>	Protein G purified
<b>Clonality</b>	Monoclonal
<b>Clone number</b>	FIS 2F11/2

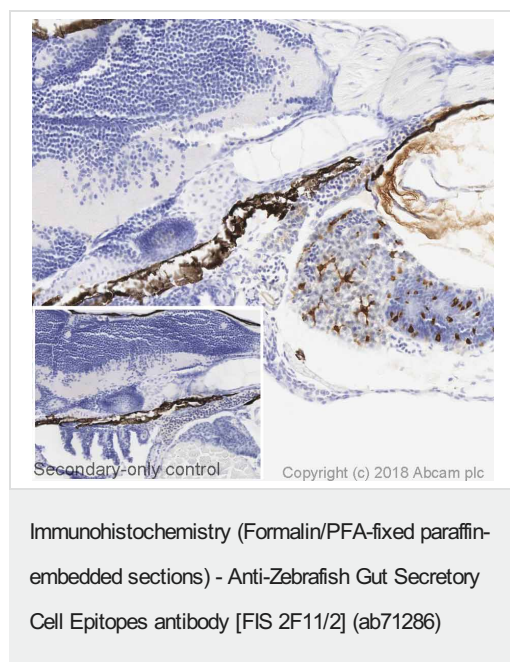
<b>Myeloma</b>	Sp2/0-Ag14
<b>Isotype</b>	IgG1
<b>Light chain type</b>	kappa

## Applications

**The Abpromise guarantee** Our **Abpromise guarantee** covers the use of ab71286 in the following tested applications. The application notes include recommended starting dilutions; optimal dilutions/concentrations should be determined by the end user.

Application	Abreviews	Notes
IHC-P		Use a concentration of 0.5 µg/ml.

## Images



IHC image of Zebrafish Gut Secretory Cell Epitopes staining in a section of formalin-fixed paraffin-embedded Zebra fish Larvae (5 days) performed on a Leica BOND™ system using the standard protocol F. The section was pre-treated using heat mediated antigen retrieval with sodium citrate buffer (pH6, epitope retrieval solution 1) for 20mins. The section was then incubated with ab71286, 0.5ug/ml, for 15 mins at room temperature and detected using an HRP conjugated compact polymer system. DAB was used as the chromogen. The section was then counterstained with haematoxylin and mounted with DPX. The inset secondary-only control image is taken from an identical assay without primary antibody.

**Please note:** All products are "FOR RESEARCH USE ONLY. NOT FOR USE IN DIAGNOSTIC PROCEDURES"

## Our Abpromise to you: Quality guaranteed and expert technical support

- Replacement or refund for products not performing as stated on the datasheet
- Valid for 12 months from date of delivery
- Response to your inquiry within 24 hours
- We provide support in Chinese, English, French, German, Japanese and Spanish
- Extensive multi-media technical resources to help you
- We investigate all quality concerns to ensure our products perform to the highest standards

If the product does not perform as described on this datasheet, we will offer a refund or replacement. For full details of the Abpromise,

please visit <https://www.abcam.com/abpromise> or contact our technical team.

#### **Terms and conditions**

---

- Guarantee only valid for products bought direct from Abcam or one of our authorized distributors