


Product datasheet

Anti-ZHX1 antibody ab19356

[2 References](#) [2 Images](#)

Overview

Product name	Anti-ZHX1 antibody
Description	Rabbit polyclonal to ZHX1
Host species	Rabbit
Tested applications	Suitable for: WB, IHC-P
Species reactivity	Reacts with: Mouse, Human Predicted to work with: Pig, Chimpanzee, Orangutan 
Immunogen	Synthetic peptide corresponding to Human ZHX1 aa 1-50. Database link: 11244
General notes	<p>The Life Science industry has been in the grips of a reproducibility crisis for a number of years. Abcam is leading the way in addressing this with our range of recombinant monoclonal antibodies and knockout edited cell lines for gold-standard validation. Please check that this product meets your needs before purchasing.</p> <p>If you have any questions, special requirements or concerns, please send us an inquiry and/or contact our Support team ahead of purchase. Recommended alternatives for this product can be found below, along with publications, customer reviews and Q&As</p>

Properties

Form	Liquid
Storage instructions	Shipped at 4°C. Upon delivery aliquot and store at -20°C. Avoid freeze / thaw cycles.
Storage buffer	pH: 7 Preservative: 0.09% Sodium azide Constituents: 0.021% PBS, 1.764% Sodium citrate, 1.815% Tris
Purity	Immunogen affinity purified
Clonality	Polyclonal
Isotype	IgG

Applications

The Abpromise guarantee Our **Abpromise guarantee** covers the use of ab19356 in the following tested applications.

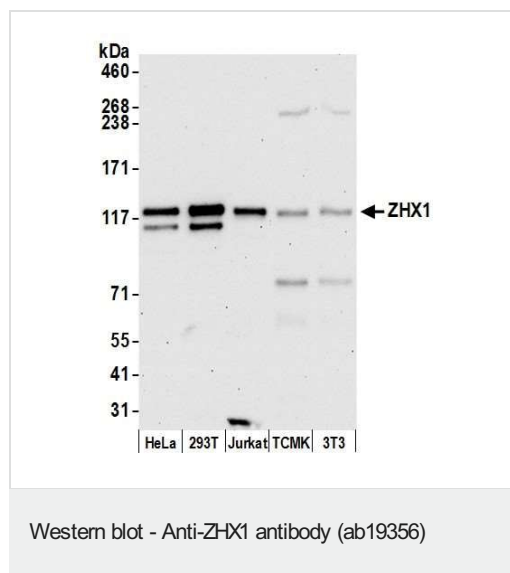
The application notes include recommended starting dilutions; optimal dilutions/concentrations should be determined by the end user.

Application	Abreviews	Notes
WB		1/2000 - 1/10000. Detects a band of approximately 120 kDa (predicted molecular weight: 100 kDa).
IHC-P		1/500 - 1/2000. Perform heat mediated antigen retrieval with citrate buffer pH 6 before commencing with IHC staining protocol.

Target

Function	Acts as a transcriptional repressor.
Tissue specificity	Ubiquitously expressed.
Sequence similarities	Belongs to the ZHX family. Contains 2 C2H2-type zinc fingers. Contains 5 homeobox DNA-binding domains.
Post-translational modifications	Phosphorylated upon DNA damage, probably by ATM or ATR.
Cellular localization	Nucleus.

Images



All lanes : Anti-ZHX1 antibody (ab19356) at 0.1 µg/ml

Lane 1 : HeLa whole cell lysate

Lane 2 : HEK293T whole cell lysate

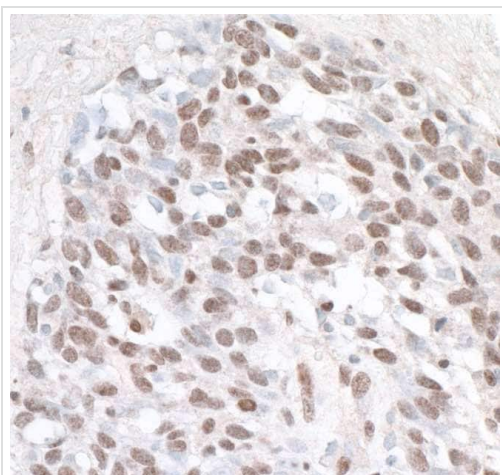
Lane 3 : Jurkat whole cell lysate

Lane 4 : TCML-1 whole cell lysate

Lane 5 : NIH-3T3 whole cell lysate

Lysates/proteins at 15 µg per lane.

Predicted band size: 100 kDa



Immunohistochemistry (Formalin/PFA-fixed paraffin-embedded sections) - Anti-ZHX1 antibody (ab19356)

Immunohistochemistry (Formalin/PFA-fixed paraffin-embedded sections) analysis of human lung carcinoma tissue labelling ZHX1 with ab19356 at 1/1000 (1µg/ml). Detection: DAB.

Please note: All products are "FOR RESEARCH USE ONLY. NOT FOR USE IN DIAGNOSTIC PROCEDURES"

Our Abpromise to you: Quality guaranteed and expert technical support

- Replacement or refund for products not performing as stated on the datasheet
- Valid for 12 months from date of delivery
- Response to your inquiry within 24 hours
- We provide support in Chinese, English, French, German, Japanese and Spanish
- Extensive multi-media technical resources to help you
- We investigate all quality concerns to ensure our products perform to the highest standards

If the product does not perform as described on this datasheet, we will offer a refund or replacement. For full details of the Abpromise, please visit <https://www.abcam.com/abpromise> or contact our technical team.

Terms and conditions

- Guarantee only valid for products bought direct from Abcam or one of our authorized distributors