


Product datasheet

Anti-ZNF148 antibody ab227076

3 Images

Overview

Product name	Anti-ZNF148 antibody
Description	Rabbit polyclonal to ZNF148
Host species	Rabbit
Tested applications	Suitable for: WB, IHC-P, ICC/IF
Species reactivity	Reacts with: Human Predicted to work with: Cow 
Immunogen	Recombinant fragment within Human ZNF148 (N terminal). The exact sequence is proprietary. Database link: Q9UQR1
Positive control	WB: HEK-293T whole cell lysate. IHC-P: Human breast cancer tissue. ICC/IF: HeLa cells.
General notes	<p>The Life Science industry has been in the grips of a reproducibility crisis for a number of years. Abcam is leading the way in addressing this with our range of recombinant monoclonal antibodies and knockout edited cell lines for gold-standard validation. Please check that this product meets your needs before purchasing.</p> <p>If you have any questions, special requirements or concerns, please send us an inquiry and/or contact our Support team ahead of purchase. Recommended alternatives for this product can be found below, along with publications, customer reviews and Q&As</p>

Properties

Form	Liquid
Storage instructions	Shipped at 4°C. Store at +4°C short term (1-2 weeks). Upon delivery aliquot. Store at -20°C long term. Avoid freeze / thaw cycle.
Storage buffer	pH: 7.00 Preservative: 0.01% Thimerosal (merthiolate) Constituents: 1.21% Tris, 0.75% Glycine, 10% Glycerol (glycerin, glycerine)
Purity	Immunogen affinity purified
Clonality	Polyclonal
Isotype	IgG

Applications

The Abpromise guarantee

Our **Abpromise guarantee** covers the use of ab227076 in the following tested applications.

The application notes include recommended starting dilutions; optimal dilutions/concentrations should be determined by the end user.

Application	Abreviews	Notes
WB		1/500 - 1/3000. Predicted molecular weight: 89 kDa.
IHC-P		1/100 - 1/1000.
ICC/IF		1/100 - 1/1000.

Target

Function

Involved in transcriptional regulation. Represses the transcription of a number of genes including gastrin, stromelysin and enolase. Binds to the G-rich box in the enhancer region of these genes.

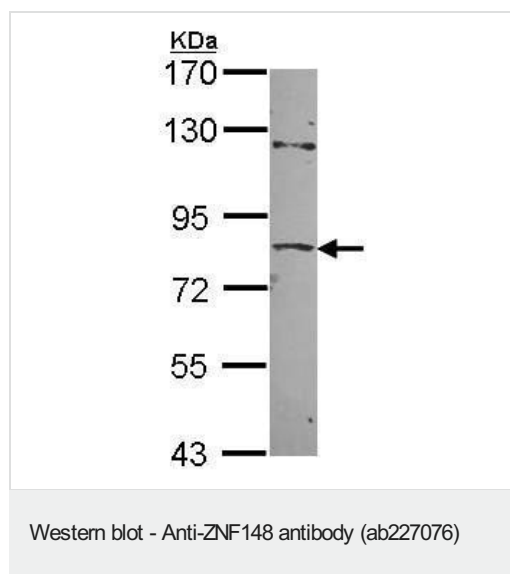
Sequence similarities

Belongs to the krueppel C2H2-type zinc-finger protein family.
Contains 4 C2H2-type zinc fingers.

Cellular localization

Nucleus.

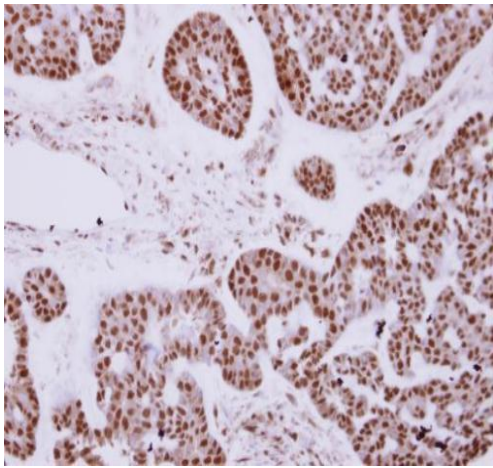
Images



Anti-ZNF148 antibody (ab227076) at 1/1000 dilution + HEK-293T (human epithelial cell line from embryonic kidney transformed with large T antigen) whole cell lysate at 30 µg

Developed using the ECL technique.

Predicted band size: 89 kDa



Paraffin-embedded human breast cancer tissue stained for ZNF148 with ab227076 at 1/250 dilution in immunohistochemical analysis.

Immunohistochemistry (Formalin/PFA-fixed paraffin-embedded sections) - Anti-ZNF148 antibody (ab227076)



Paraformaldehyde-fixed HeLa (human epithelial cell line from cervix adenocarcinoma) cells stained for ZNF148 (green) using ab227076 at 1/500 dilution in ICC/IF.

Blue: Hoechst 33342 staining.

Immunocytochemistry/ Immunofluorescence - Anti-ZNF148 antibody (ab227076)

Please note: All products are "FOR RESEARCH USE ONLY. NOT FOR USE IN DIAGNOSTIC PROCEDURES"

Our Abpromise to you: Quality guaranteed and expert technical support

- Replacement or refund for products not performing as stated on the datasheet
- Valid for 12 months from date of delivery
- Response to your inquiry within 24 hours
- We provide support in Chinese, English, French, German, Japanese and Spanish
- Extensive multi-media technical resources to help you
- We investigate all quality concerns to ensure our products perform to the highest standards

If the product does not perform as described on this datasheet, we will offer a refund or replacement. For full details of the Abpromise, please visit <https://www.abcam.com/abpromise> or contact our technical team.

Terms and conditions

- Guarantee only valid for products bought direct from Abcam or one of our authorized distributors