


Anti-ZnT1 antibody ab214356

3 Images

Overview

Product name	Anti-ZnT1 antibody
Description	Rabbit polyclonal to ZnT1
Host species	Rabbit
Tested applications	Suitable for: IHC-P
Species reactivity	Reacts with: Mouse Predicted to work with: Rat, Human 
Immunogen	Synthetic peptide within Human ZnT1 aa 250-308 conjugated to keyhole limpet haemocyanin. The exact sequence is proprietary. Database link: Q9Y6M5
Positive control	Mouse intestine tissue.
General notes	<p>The Life Science industry has been in the grips of a reproducibility crisis for a number of years. Abcam is leading the way in addressing this with our range of recombinant monoclonal antibodies and knockout edited cell lines for gold-standard validation. Please check that this product meets your needs before purchasing.</p> <p>If you have any questions, special requirements or concerns, please send us an inquiry and/or contact our Support team ahead of purchase. Recommended alternatives for this product can be found below, along with publications, customer reviews and Q&As</p>

Properties

Form	Liquid
Storage instructions	Shipped at 4°C. Store at +4°C short term (1-2 weeks). Upon delivery aliquot. Store at -20°C long term. Avoid freeze / thaw cycle.
Storage buffer	pH: 7.40 Preservative: 0.02% Proclin 300 Constituents: 50% Glycerol (glycerin, glycerine), 1% BSA, 48.98% TBS, 1X
Purity	Protein A purified
Clonality	Polyclonal
Isotype	IgG

Applications

The Abpromise guarantee

Our **Abpromise guarantee** covers the use of ab214356 in the following tested applications.

The application notes include recommended starting dilutions; optimal dilutions/concentrations should be determined by the end user.

Application	Abreviews	Notes
IHC-P		1/100 - 1/500. Perform heat mediated antigen retrieval with citrate buffer pH 6 before commencing with IHC staining protocol. When using a fluorescent probe the recommended dilution is 1/50 – 1/200.

Target

Function

May be involved in zinc transport out of the cell.

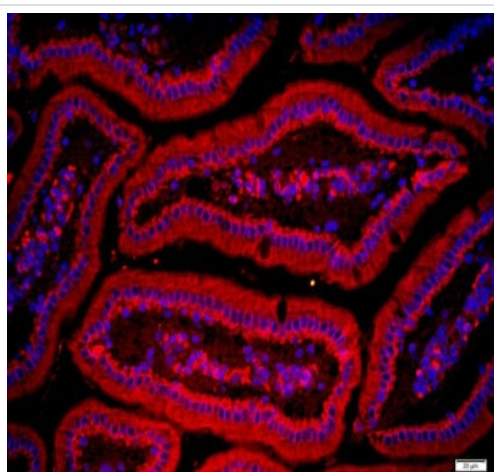
Sequence similarities

Belongs to the cation diffusion facilitator (CDF) transporter (TC 2.A.4) family. SLC30A subfamily.

Cellular localization

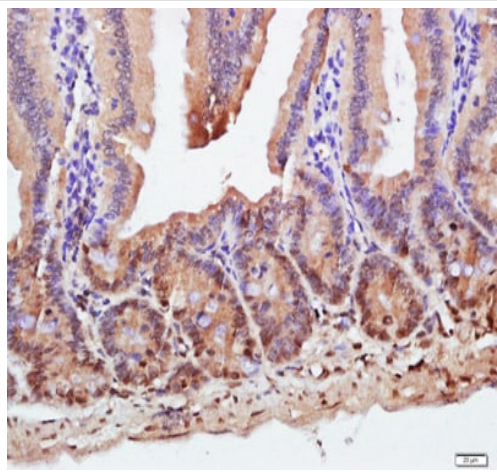
Cell membrane.

Images



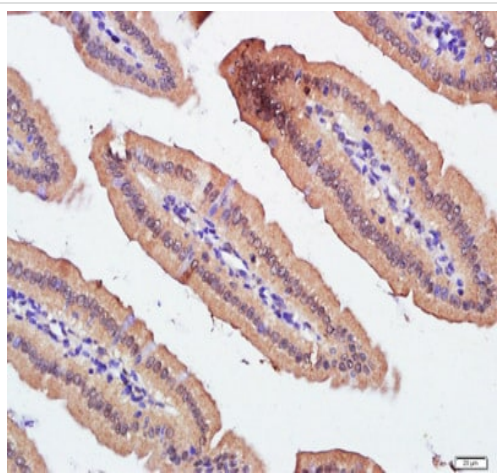
Immunohistochemical analysis of paraformaldehyde-fixed, paraffin-embedded mouse intestine tissue labeling ZnT1 with ab214356 at 1/200 dilution overnight at 4°C followed by a conjugated secondary and DAPI staining.

Immunohistochemistry (Formalin/PFA-fixed paraffin-embedded sections) - Anti-ZnT1 antibody (ab214356)



Immunohistochemistry (Formalin/PFA-fixed paraffin-embedded sections) - Anti-ZnT1 antibody (ab214356)

Immunohistochemical analysis of paraformaldehyde-fixed, paraffin-embedded mouse intestine tissue labeling ZnT1 with ab214356 at 1/500 dilution overnight at 4°C followed by a conjugated secondary and DAB staining.



Immunohistochemistry (Formalin/PFA-fixed paraffin-embedded sections) - Anti-ZnT1 antibody (ab214356)

Immunohistochemical analysis of paraformaldehyde-fixed, paraffin-embedded mouse intestine tissue labeling ZnT1 with ab214356 at 1/500 dilution overnight at 4°C followed by a conjugated secondary and DAB staining.

Please note: All products are "FOR RESEARCH USE ONLY. NOT FOR USE IN DIAGNOSTIC PROCEDURES"

Our Abpromise to you: Quality guaranteed and expert technical support

-
- Replacement or refund for products not performing as stated on the datasheet
 - Valid for 12 months from date of delivery
 - Response to your inquiry within 24 hours

 - We provide support in Chinese, English, French, German, Japanese and Spanish
 - Extensive multi-media technical resources to help you
 - We investigate all quality concerns to ensure our products perform to the highest standards

If the product does not perform as described on this datasheet, we will offer a refund or replacement. For full details of the Abpromise, please visit <https://www.abcam.com/abpromise> or contact our technical team.

Terms and conditions

- Guarantee only valid for products bought direct from Abcam or one of our authorized distributors