


Product datasheet

Anti-ZO1 tight junction protein antibody - C-terminal ab190085

★★★★☆ [28 Abreviews](#) [45 References](#) [3 Images](#)

Overview

Product name	Anti-ZO1 tight junction protein antibody - C-terminal
Description	Goat polyclonal to ZO1 tight junction protein - C-terminal
Host species	Goat
Tested applications	Suitable for: ICC/IF, WB, IHC-P, IHC-FoFr, IHC-Fr
Species reactivity	Reacts with: Dog, Human Predicted to work with: Mouse, Rat, Monkey 
Immunogen	Recombinant fragment within Human ZO1 tight junction protein aa 1580-1748 (C terminal). The exact sequence is proprietary. (Purified from E.coli; NP_003248.3). Database link: Q07157
Positive control	WB: MDCK cell lysate. IHC-P: Human kidney tissue. ICC/IF: Primary RPE cells.
General notes	<p>The Life Science industry has been in the grips of a reproducibility crisis for a number of years. Abcam is leading the way in addressing this with our range of recombinant monoclonal antibodies and knockout edited cell lines for gold-standard validation. Please check that this product meets your needs before purchasing.</p> <p>If you have any questions, special requirements or concerns, please send us an inquiry and/or contact our Support team ahead of purchase. Recommended alternatives for this product can be found below, along with publications, customer reviews and Q&As</p>

Properties

Form	Liquid
Storage instructions	Shipped at 4°C. Store at +4°C short term (1-2 weeks). Upon delivery aliquot. Store at -20°C long term. Avoid freeze / thaw cycle.
Storage buffer	pH: 7.4 Preservative: 0.05% Sodium azide Constituents: 79% PBS, 20% Glycerol (glycerin, glycerine)
Purity	Immunogen affinity purified
Clonality	Polyclonal
Isotype	IgG

Applications

The Abpromise guarantee Our **Abpromise guarantee** covers the use of ab190085 in the following tested applications.

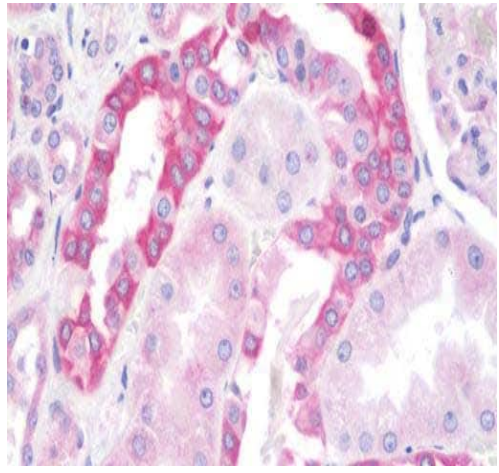
The application notes include recommended starting dilutions; optimal dilutions/concentrations should be determined by the end user.

Application	Abreviews	Notes
ICC/IF	★★★★★ (7)	1/50 - 1/250.
WB	★★★☆☆ (1)	1/500 - 1/2000. Predicted molecular weight: 195 kDa.
IHC-P	★★★★★ (12)	Use a concentration of 10 µg/ml.
IHC-FoFr	★★★★★ (3)	Use at an assay dependent concentration.
IHC-Fr	★★★★★ (3)	Use at an assay dependent concentration.

Target

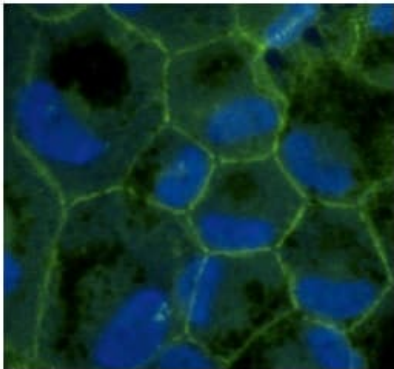
Function	The N-terminal may be involved in transducing a signal required for tight junction assembly, while the C-terminal may have specific properties of tight junctions. The alpha domain might be involved in stabilizing junctions.
Tissue specificity	The alpha-containing isoform is found in most epithelial cell junctions. The short isoform is found both in endothelial cells and the highly specialized epithelial junctions of renal glomeruli and Sertoli cells of the seminiferous tubules.
Sequence similarities	Belongs to the MAGUK family. Contains 1 guanylate kinase-like domain. Contains 3 PDZ (DHR) domains. Contains 1 SH3 domain. Contains 1 ZU5 domain.
Domain	The second PDZ domain mediates interaction with GJA12.
Post-translational modifications	Phosphorylated. Dephosphorylated by PTPRJ.
Cellular localization	Cell membrane. Cell junction > tight junction. Movement of ZO-1 from the cytoplasm to membrane is an early event occurring concurrently with cell-cell contact.

Images



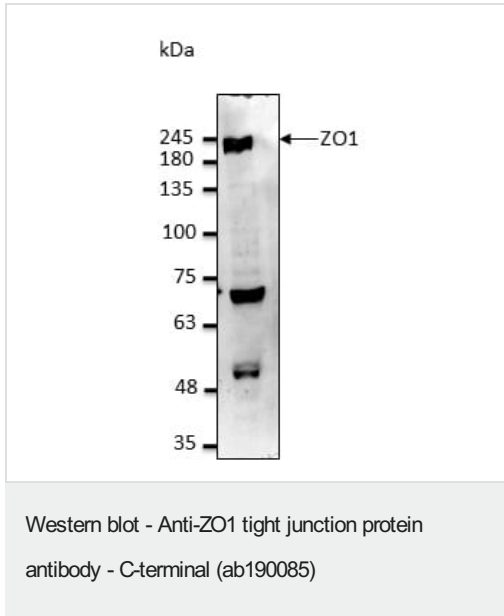
Immunohistochemical analysis of formalin-fixed, paraffin-embedded Human kidney tissue labeling ZO1 tight junction protein with ab190085 at 10 µg/ml.

Immunohistochemistry (Formalin/PFA-fixed paraffin-embedded sections) - Anti-ZO1 tight junction protein antibody - C-terminal (ab190085)



Immunocytochemistry/ Immunofluorescence analysis of primary RPE cells labeling ZO1 tight junction protein with ab190085 at 1/100 dilution.

Immunocytochemistry/ Immunofluorescence - Anti-ZO1 tight junction protein antibody - C-terminal (ab190085)



Anti-ZO1 tight junction protein antibody - C-terminal (ab190085) at 1/2500 dilution + MDCK cell lysate at 50 μ g

Secondary

Rabbit polyclonal to goat IgG (HRP) at 1/10000 dilution

Predicted band size: 195 kDa

Please note: All products are "FOR RESEARCH USE ONLY. NOT FOR USE IN DIAGNOSTIC PROCEDURES"

Our Abpromise to you: Quality guaranteed and expert technical support

- Replacement or refund for products not performing as stated on the datasheet
- Valid for 12 months from date of delivery
- Response to your inquiry within 24 hours
- We provide support in Chinese, English, French, German, Japanese and Spanish
- Extensive multi-media technical resources to help you
- We investigate all quality concerns to ensure our products perform to the highest standards

If the product does not perform as described on this datasheet, we will offer a refund or replacement. For full details of the Abpromise, please visit <https://www.abcam.com/abpromise> or contact our technical team.

Terms and conditions

- Guarantee only valid for products bought direct from Abcam or one of our authorized distributors