

## Product datasheet

# Human IgE protein (Azide free) ab65866

★★★★☆ [2 Abreviews](#) [10 References](#) [2 Images](#)

### Description

---

<b>Product name</b>	Human IgE protein (Azide free)
<b>Biological activity</b>	1 mg of ab65866 is 380,000± 50,000 IU/ml.
<b>Purity</b>	> 90 % SDS-PAGE. Human IgE full length protein was purified by Protein L chromatography. As the IgE comes from a monoclonal cell line, there is no contamination of antibodies of other isotypes. The remaining contaminants are mainly components from Foetal Bovine Serum.
<b>Endotoxin level</b>	< 25.000 Eu/mg
<b>Accession</b>	<a href="#">P0DOX4</a> <a href="#">P0DOX7</a>
<b>Protein length</b>	Full length protein
<b>Animal free</b>	No
<b>Nature</b>	Synthetic
<b>Amino Acid Sequence 1</b>	
<b>Species</b>	Human
<b>Additional sequence information</b>	Observed band of ~185kDa on SDS-PAGE
<b>Amino Acid Sequence 2</b>	
<b>Species</b>	Human
<b>Description</b>	Native Human IgE protein (Azide free)

### Specifications

---

Our **Abpromise guarantee** covers the use of **ab65866** in the following tested applications.

The application notes include recommended starting dilutions; optimal dilutions/concentrations should be determined by the end user.

<b>Applications</b>	SDS-PAGE IHC - Wholemout Western blot ELISA Immunocytochemistry
<b>Form</b>	Liquid

## Additional notes

This product is purified Human IgE with kappa light chains produced *in vitro* from a monoclonal hybridoma.

This antigen is quite unique, because it is the only available IgE product, which originates from a human monoclonal cell line. Our IgE product shows superior advantage when compared to the traditionally purified polyclonal IgE from myeloma patients. A comparison which is highly superior on the following key parameters:.

- Low batch-to-batch variation
- Higher degree of purity (>90%)
- A more uniform product (monoclonal and not polyclonal)

Low endotoxin levels below < 25 EU/mg allow use of IgE protein in cellular immunology and in cell proliferation studies.

## Preparation and Storage

---

### Stability and Storage

Shipped at 4°C. Store at +4°C short term (1-2 weeks). Upon delivery aliquot. Store at -20°C long term. Avoid freeze / thaw cycle.

pH: 7.40

Constituents: 0.00017% PBS, 0.88% Sodium chloride

This product is an active protein and may elicit a biological response *in vivo*, handle with caution.

## General Info

---

### Relevance

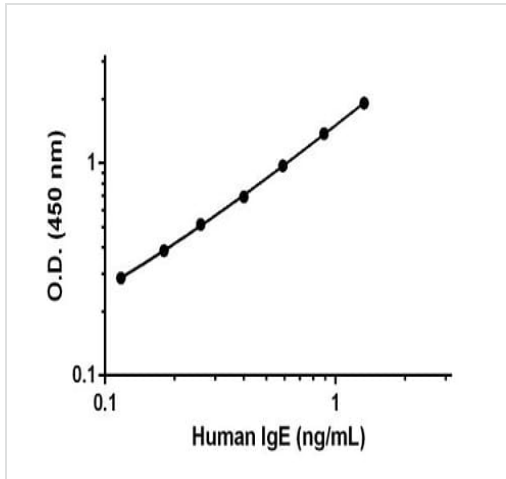
IgE is the class of antibodies produced in the lungs, skin, and mucous membranes. It may protect against parasite invasion, but it is a major factor in allergic reactions. The antigen-specific IgE interacts with mast cells and eosinophils, triggers the release of histamine, leukotrienes and other substances that lead to the itching, sneezing and congestion of allergies - and the life threatening respiratory distress of asthma and anaphylactic shock.

### Cellular localization

Cell Membrane

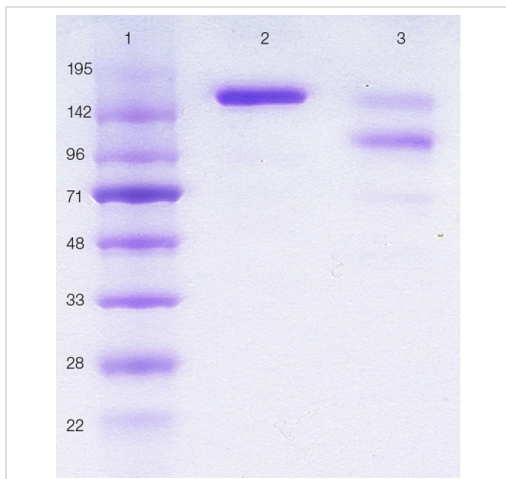
## Images

---



Background-subtracted data values (mean +/- SD) are graphed.

Sandwich ELISA - Native Human IgE protein (Azide free) (ab65866)



SDS-PAGE analysis of:

Lane 1: Molecular weight markers.

Lane 2: ab65866.

Lane 3: IgE purified from serum from a myeloma patient.

SDS-PAGE - Native Human IgE protein (Azide free) (ab65866)

**Please note:** All products are "FOR RESEARCH USE ONLY. NOT FOR USE IN DIAGNOSTIC PROCEDURES"

### Our Abpromise to you: Quality guaranteed and expert technical support

- Replacement or refund for products not performing as stated on the datasheet
- Valid for 12 months from date of delivery
- Response to your inquiry within 24 hours
- We provide support in Chinese, English, French, German, Japanese and Spanish
- Extensive multi-media technical resources to help you
- We investigate all quality concerns to ensure our products perform to the highest standards

If the product does not perform as described on this datasheet, we will offer a refund or replacement. For full details of the Abpromise, please visit <https://www.abcam.com/abpromise> or contact our technical team.

## Terms and conditions

---

- Guarantee only valid for products bought direct from Abcam or one of our authorized distributors