

Native dog LRG1/LRG protein ab167919

1 Image

Description	
Product name	Native dog LRG1/LRG protein
Purity	> 90 % SDS-PAGE.
Endotoxin level	< 1.000 Eu/µg
Expression system	Native
Protein length	Full length protein
Animal free	No
Nature	Native
Species	Dog
Sequence	MSPWSPERSQ SPGGLSSHLS KTLALLLFSV ASAQGVTPDR DTCLVFPSSN GSSVVSCHPPA KLPHHFPSDT VHLVVEFFNL TQLRPDTLQG VSNLQELHLS TNQLESLSPK LLLPVPLLKV LDLTRNALTQ LPPGLFRVSA ALHTLVLEN RLEVLEPSWL CGLKALGHLD LSGNHLQTL PGLLANVTAL RILDLSNNQL KTLPLDLLRG PLQLERLHLE GNRLQVLEEG LLAPQPGLRY LFLSDNKLAA VAAGAFRGLQ QLDMLDLSNN SLTSVPKGLW TSLGQPTRDM EDGFDISGNP WICDHNLDL YRWLVANKDK MFSRNDTRCA RPEALKGQTL LEAAESH
Predicted molecular weight	38 kDa
Amino acids	1 to 347
Additional sequence information	Source = pooled canine serum

Specifications	
Our <b>Abpromise guarantee</b> covers the use of <b>ab167919</b> in the following tested applications.	
The application notes include recommended starting dilutions; optimal dilutions/concentrations should be determined by the end user.	
Applications	Mass Spectrometry Functional Studies SDS-PAGE

	Western blot
	ELISA
<b>Mass spectrometry</b>	LC-MS/MS
<b>Form</b>	Lyophilized
<b>Additional notes</b>	ab167919 specifically binds to Human Cytochrome c1, heme protein. This product was previously labelled as LRG1

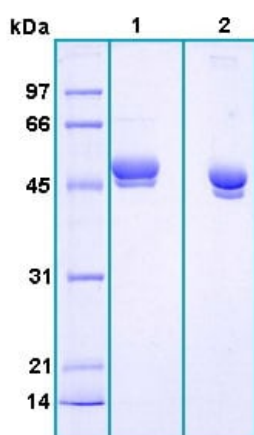
## Preparation and Storage

<b>Stability and Storage</b>	Shipped at 4°C. Store at -20°C.  Constituents: 0.24% Tris, 0.29% Sodium chloride  This product is an active protein and may elicit a biological response in vivo, handle with caution.
<b>Reconstitution</b>	Add 200µl of deionized water to prepare a working stock solution of 0.5 mg/ml and let the lyophilized pellet dissolve completely. Aliquot reconstituted protein to avoid repeated freezing/thawing cycles and store at -80°C for long term storage.  Product is not sterile! Please filter the product by an appropriate sterile filter before using it in the cell culture.

## General Info

<b>Tissue specificity</b>	Plasma.
<b>Sequence similarities</b>	Contains 8 LRR (leucine-rich) repeats. Contains 1 LRRCT domain.
<b>Cellular localization</b>	Secreted.

## Images



12% SDS-PAGE analysis of ab167919 stained with Coomassie Brilliant Blue R250

**Lane 1:** reduced and boiled sample, 2.5µg/lane

**Lane 2:** non-reduced and non-boiled sample, 2.5µg/lane

SDS-PAGE - Native dog LRG1/LRG protein  
(ab167919)

**Please note:** All products are "FOR RESEARCH USE ONLY. NOT FOR USE IN DIAGNOSTIC PROCEDURES"

### **Our Abpromise to you: Quality guaranteed and expert technical support**

---

- Replacement or refund for products not performing as stated on the datasheet
- Valid for 12 months from date of delivery
- Response to your inquiry within 24 hours
  
- We provide support in Chinese, English, French, German, Japanese and Spanish
- Extensive multi-media technical resources to help you
- We investigate all quality concerns to ensure our products perform to the highest standards

If the product does not perform as described on this datasheet, we will offer a refund or replacement. For full details of the Abpromise, please visit <https://www.abcam.com/abpromise> or contact our technical team.

### **Terms and conditions**

---

- Guarantee only valid for products bought direct from Abcam or one of our authorized distributors