

Native Dog UMOD protein ab168879

1 Image

Description	
Product name	Native Dog UMOD protein
Purity	> 95 % SDS-PAGE.
Endotoxin level	< 1.000 Eu/µg
Expression system	Native
Accession	<u>Q862Z3</u>
Protein length	Full length protein
Animal free	No
Nature	Native
Species	Dog
Sequence	RSCSECHSNA TCMEDGMVTT CSCLVGFTGS GFECVDLDEC AIPGAHNCSE GSSCMNTLGS YLCTCPDGFR LTPGLGCIDV DECSEPGLSR CHALATCINN KGNYSVCVCPA GYRGDQQHCE CSPGSCGPGL DCVPVGDALV CADPCQEHRI LDEYWRSTEY GAGYTCDVGL NGWYRFTGPG GVRLAETCVP VLHCNTAAPM WLNGTHPTRD QGIVNRTACA HWRGHCCCLWD ASIQVKACAG GYVYNLTET PECYLAYCTD PTSVLGTCEE CSVEEDCKSH DGMWSCQCKQ DFNVTDLFLL DRLECRPNDIKVSLSKCQLK SLGFEKVFMY LRDSQC SGFN ERGDRDWVSV VTPARDGPCG TVMVRNETHA TYSNTLYLAD EMIRDRIK INFEC SYPLD MKVSLETSLQ PIVSSLNISV GGTGMFTVRM ALFQTPDYTQ PYQGSSVTLT TEAFLYVGTM LDGGDLSRFA LLMTNCYATP SSNATDPLKY FIIQDRCPRT TDSTIQVVEN GES PQGRFSV QMFRFAGNYD LVYLHCEVYL CDIINEKCKP TCSGTRFRSG GIIDQSRVLN LGPITRKNVQ AVVSRAASS
Predicted molecular weight	64 kDa
Amino acids	32 to 620
Additional sequence information	Source = Canine urine

## Specifications

---

Our **Abpromise guarantee** covers the use of **ab168879** in the following tested applications.

The application notes include recommended starting dilutions; optimal dilutions/concentrations should be determined by the end user.

<b>Applications</b>	Western blot
	ELISA
	SDS-PAGE
	Mass Spectrometry
<b>Mass spectrometry</b>	LC-MS/MS
<b>Form</b>	Lyophilized
<b>Additional notes</b>	Previously labelled as Uromucoid.

## Preparation and Storage

---

<b>Stability and Storage</b>	Shipped at 4°C. Store at -80°C.
	Constituent: 100% Water
<b>Reconstitution</b>	<p>Add 200 µl deionized water to prepare a working stock solution of approximately 0.5 mg/ml and let the lyophilized pellet dissolve completely. Aliquot reconstituted protein to avoid repeated freezing/thawing cycles and store at -80°C for long term storage.</p> <p>Product is not sterile! Please filter the product by an appropriate sterile filter before using it in cell culture.</p>

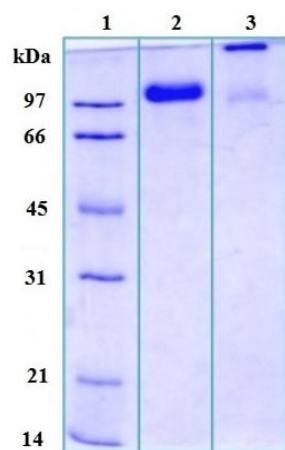
## General Info

---

<b>Function</b>	Not known. May play a role in regulating the circulating activity of cytokines as it binds to IL-1, IL-2 and TNF with high affinity.
<b>Tissue specificity</b>	Synthesized by kidney. Most abundant protein in normal human urine.
<b>Involvement in disease</b>	<p>Defects in UMOD are the cause of familial juvenile hyperuricemic nephropathy type 1 (HNFJ1) [MIM:162000]. HNFJ1 is a renal disease characterized by juvenile onset of hyperuricemia, polyuria, progressive renal failure, and gout. The disease is associated with interstitial pathological changes resulting in fibrosis.</p> <p>Defects in UMOD are the cause of medullary cystic kidney disease type 2 (MCKD2) [MIM:603860]. MCKD2 is a form of tubulointerstitial nephropathy characterized by formation of renal cysts at the corticomedullary junction. It is characterized by adult onset of impaired renal function and salt wasting resulting in end-stage renal failure by the sixth decade.</p> <p>Defects in UMOD are the cause of glomerulocystic kidney disease with hyperuricemia and isosthenuria (GCKDHI) [MIM:609886]. GCKDHI is a renal disorder characterized by a cystic dilation of Bowman space, a collapse of glomerular tuft, and hyperuricemia due to low fractional excretion of uric acid and severe impairment of urine concentrating ability.</p>
<b>Sequence similarities</b>	<p>Contains 3 EGF-like domains.</p> <p>Contains 1 ZP domain.</p>
<b>Cellular localization</b>	Cell membrane. Secreted. Secreted after cleavage in the urine.

## Images

---



12% SDS-PAGE analysis of ab168879 stained with Coomassie Brilliant Blue G250.

Lane 1: MWt marker

Lane 2: reduced and heated sample, 2.5 µg

Lane 3: non-reduced and non-heated sample, 2.5 µg

SDS-PAGE - Native Dog UMOD protein (ab168879)

**Please note:** All products are "FOR RESEARCH USE ONLY. NOT FOR USE IN DIAGNOSTIC PROCEDURES"

### Our Abpromise to you: Quality guaranteed and expert technical support

- Replacement or refund for products not performing as stated on the datasheet
- Valid for 12 months from date of delivery
- Response to your inquiry within 24 hours
- We provide support in Chinese, English, French, German, Japanese and Spanish
- Extensive multi-media technical resources to help you
- We investigate all quality concerns to ensure our products perform to the highest standards

If the product does not perform as described on this datasheet, we will offer a refund or replacement. For full details of the Abpromise, please visit <https://www.abcam.com/abpromise> or contact our technical team.

### Terms and conditions

- Guarantee only valid for products bought direct from Abcam or one of our authorized distributors