

# Native Human Haptoglobin protein ab90924

[2 References](#) [1 Image](#)

### Description

<b>Product name</b>	Native Human Haptoglobin protein
<b>Purity</b>	> 95 % SDS-PAGE.
<b>Expression system</b>	Native
<b>Accession</b>	<b><u>P00738</u></b>
<b>Protein length</b>	Full length protein
<b>Animal free</b>	No
<b>Nature</b>	Native
<b>Species</b>	Human
<b>Sequence</b>	<p>MSALGAVIALLLWGQLFAVDSGNDVTDIADDGCPKPPEIA            HGYVEHSVRYQCKNYYKLRT            EGDGVYTLNDKKQWINKAVGDKLPECEADDGCPKPPEI            AHGYVEHSVRYQCKNYYKL RTE            GDGVYTLNNEKQWINKAVGDKLPECE            AVCGKPKNPANPVQRILGGHLDAGKSF PWQAKMV            SHHNLTTGATLINE            QWLLTTAKNLF LN HSENATAKDIAPTLTLYVGKKQLVEIEK            VVLHP NY            SQVDIGLIK LKQKVS VNERVMPICLPSKDYAEVGRVGYVS            GWGRNANFKF TDHLKYVM            LPVADQDQCIRHYEGSTVPEK KTPKSPVGVQPILNEHTFC            AGMSKYQEDTCYGDAGSAFA            VHDLEEDTWYATGILSFDKSCA VA EYGV            YVKVTSIQDWVQKTAEN</p>

### Specifications

Our **Abpromise guarantee** covers the use of **ab90924** in the following tested applications.

The application notes include recommended starting dilutions; optimal dilutions/concentrations should be determined by the end user.

<b>Applications</b>	SDS-PAGE
<b>Form</b>	Lyophilized
<b>Additional notes</b>	Protein Determination: Extinction Coefficient (E) 0.1% at 280nm, 1cm pathway = 1.20. Prepared from plasma shown to be non reactive for HBsAg, anti-HCV, anti-HBc, and negative for anti-HIV 1

& 2 by FDA approved tests.

## Preparation and Storage

### Stability and Storage

Shipped at 4°C. Store at -20°C.

Constituent: 100% Haptoglobin

## General Info

### Function

As a result of hemolysis, hemoglobin is found to accumulate in the kidney and is secreted in the urine. Haptoglobin captures, and combines with free plasma hemoglobin to allow hepatic recycling of heme iron and to prevent kidney damage. Haptoglobin also acts as an Antimicrobial; Antioxidant, has antibacterial activity and plays a role in modulating many aspects of the acute phase response. Hemoglobin/haptoglobin complexes are rapidly cleared by the macrophage CD163 scavenger receptor expressed on the surface of liver Kupfer cells through an endocytic lysosomal degradation pathway.

Uncleaved haptoglobin, also known as zonulin, plays a role in intestinal permeability, allowing intercellular tight junction disassembly, and controlling the equilibrium between tolerance and immunity to non-self antigens.

### Tissue specificity

Expressed by the liver and secreted in plasma.

### Involvement in disease

Anhaptoglobinemia

### Sequence similarities

Belongs to the peptidase S1 family.

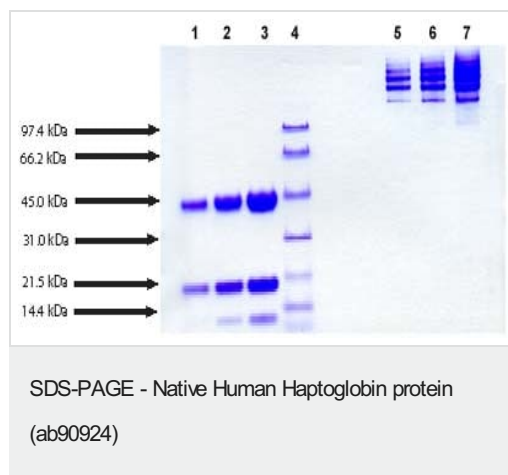
Contains 1 peptidase S1 domain.

Contains 2 Sushi (CCP/SCR) domains.

### Cellular localization

Secreted.

## Images



SDS-PAGE analysis of ab90924: 4-12% Bis-Tris-HCl NuPAGE gel

Lane 1: Haptoglobin - 5 µg (reduced/ heated)

Lane 2: Haptoglobin - 10 µg (reduced/ heated)

Lane 3: Haptoglobin - 20 µg (reduced/ heated)

Lane 4: Molecular weight markers

Lane 5: Haptoglobin - 5 µg (non-reduced/ no heat)

Lane 6: Haptoglobin - 10 µg (non-reduced/ no heat)

Lane 7: Haptoglobin - 20 µg (non-reduced/ no heat)

**Please note:** All products are "FOR RESEARCH USE ONLY. NOT FOR USE IN DIAGNOSTIC PROCEDURES"

**Our Promise to you: Quality guaranteed and expert technical support**

- Replacement or refund for products not performing as stated on the datasheet
- Valid for 12 months from date of delivery
- Response to your inquiry within 24 hours
- We provide support in Chinese, English, French, German, Japanese and Spanish
- Extensive multi-media technical resources to help you
- We investigate all quality concerns to ensure our products perform to the highest standards

If the product does not perform as described on this datasheet, we will offer a refund or replacement. For full details of the Abpromise, please visit <https://www.abcam.com/abpromise> or contact our technical team.

#### **Terms and conditions**

---

- Guarantee only valid for products bought direct from Abcam or one of our authorized distributors