

## Product datasheet

### Native Human IgE protein ab90392

[3 References](#) [1 Image](#)

#### Description

<b>Product name</b>	Native Human IgE protein
<b>Purity</b>	> 95 % SDS-PAGE.
<b>Expression system</b>	Native
<b>Protein length</b>	Full length protein
<b>Animal free</b>	No
<b>Nature</b>	Native
<b>Species</b>	Human
<b>Predicted molecular weight</b>	200 kDa

#### Specifications

Our [Abpromise guarantee](#) covers the use of **ab90392** in the following tested applications.

The application notes include recommended starting dilutions; optimal dilutions/concentrations should be determined by the end user.

<b>Applications</b>	SDS-PAGE
<b>Form</b>	Liquid
<b>Additional notes</b>	Prepared from plasma shown to be non reactive for HBsAg, anti-HCV, anti-HBc, and negative for anti-HIV 1 and 2 by FDA approved tests.

#### Preparation and Storage

<b>Stability and Storage</b>	Shipped on Dry Ice. Upon delivery aliquot. Store at -20°C or -80°C. Avoid freeze / thaw cycle. pH: 7.50 Preservative: 0.05% Sodium azide Constituents: 1.16% Sodium chloride, 1.21% Tris
------------------------------	---

#### General Info

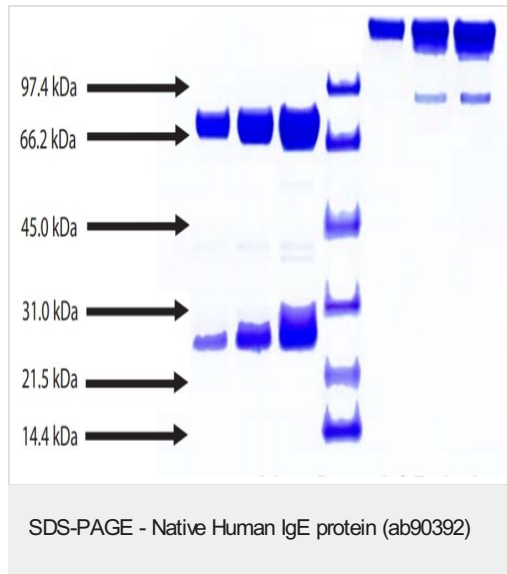
<b>Relevance</b>	IgE is the class of antibodies produced in the lungs, skin, and mucous membranes. It may protect against parasite invasion, but it is a major factor in allergic reactions. The antigen-specific IgE
------------------	--

interacts with mast cells and eosinophils, triggers the release of histamine, leukotrienes and other substances that lead to the itching, sneezing and congestion of allergies - and the life threatening respiratory distress of asthma and anaphylactic shock.

## Cellular localization

Cell Membrane

## Images



4 - 12% Bis-Tris NuPAGE gel

1. IgE - 5 µg (reduced / heated)
2. IgE - 10 µg (reduced / heated)
3. IgE - 20 µg (reduced / heated)
4. LMW Standard (BIO-RAD Cat. No. 161-0304)
5. IgE - 5 µg (non-reduced / no heat)
6. IgE - 10 µg (non-reduced / no heat)
7. IgE - 20 µg (non-reduced / no heat)

**Please note:** All products are "FOR RESEARCH USE ONLY. NOT FOR USE IN DIAGNOSTIC PROCEDURES"

## Our Abpromise to you: Quality guaranteed and expert technical support

- Replacement or refund for products not performing as stated on the datasheet
- Valid for 12 months from date of delivery
- Response to your inquiry within 24 hours
- We provide support in Chinese, English, French, German, Japanese and Spanish
- Extensive multi-media technical resources to help you
- We investigate all quality concerns to ensure our products perform to the highest standards

If the product does not perform as described on this datasheet, we will offer a refund or replacement. For full details of the Abpromise, please visit <https://www.abcam.com/abpromise> or contact our technical team.

## Terms and conditions

- Guarantee only valid for products bought direct from Abcam or one of our authorized distributors