

Product datasheet

Native Human IgG1 protein ab90283

[7 References](#) [1 Image](#)

Description

Product name	Native Human IgG1 protein
Purity	> 95 % SDS-PAGE.
Expression system	Native
Accession	<u>P01857</u>
Protein length	Full length protein
Animal free	No
Nature	Native
Species	Human
Predicted molecular weight	146 kDa
Additional sequence information	This product is the whole IgG molecule composed of 2 heavy chains and 2 light chains, joined via disulfide bonds.

Specifications

Our **Abpromise guarantee** covers the use of **ab90283** in the following tested applications.

The application notes include recommended starting dilutions; optimal dilutions/concentrations should be determined by the end user.

Applications	SDS-PAGE ELISA
Form	Liquid
Additional notes	Protein Determination: Extinction Coefficient (E) 0.1% at 280nm =1.36. Prepared from myeloma plasma shown to be non reactive for HBsAg, anti-HCV, anti-HBc, and negative for anti-HIV 1 and 2 by FDA approved tests.

Preparation and Storage

Stability and Storage	Shipped on Dry Ice. Upon delivery aliquot. Store at -20°C. Avoid freeze / thaw cycle. pH: 7.40 Preservative: 0.05% Sodium azide
------------------------------	---

Constituents: 0.87% Sodium chloride, 0.3% Sodium phosphate monobasic, monohydrate

General Info

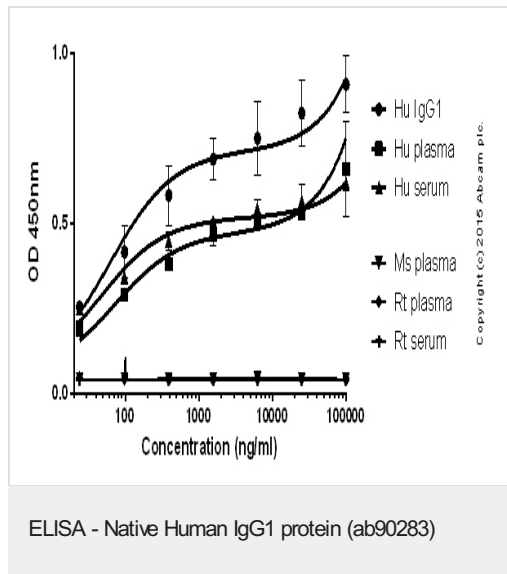
Relevance

There are four IgG subclasses (IgG1, 2, 3 and 4) in humans, named in order of their abundance in serum (IgG1 being the most abundant).

Cellular localization

Secreted. Cell membrane; Single-pass membrane protein

Images



The wells were coated with **ab200699** at 5µg/ml at 50µl/well overnight at 4°C, followed by a 5% BSA blocking step for 2h RT. Human IgG1 (ab90283) was then added starting at 100 µg/ml and plasma/serum at 1:50 and gradually diluted 1:4, 50µl/well for 2h. Ab201485 was then added at 1:10,000 dilution, 50µl/well for 2h. A HRP-streptavidin (**ab7403**) was used at 1:10,000 dilution for 1h.

Please note: All products are "FOR RESEARCH USE ONLY. NOT FOR USE IN DIAGNOSTIC PROCEDURES"

Our Abpromise to you: Quality guaranteed and expert technical support

- Replacement or refund for products not performing as stated on the datasheet
- Valid for 12 months from date of delivery
- Response to your inquiry within 24 hours
- We provide support in Chinese, English, French, German, Japanese and Spanish
- Extensive multi-media technical resources to help you
- We investigate all quality concerns to ensure our products perform to the highest standards

If the product does not perform as described on this datasheet, we will offer a refund or replacement. For full details of the Abpromise, please visit <https://www.abcam.com/abpromise> or contact our technical team.

Terms and conditions

- Guarantee only valid for products bought direct from Abcam or one of our authorized distributors