

## Product datasheet

# Native Human IgG2 protein ab90284

[8 References](#) [1 Image](#)

### Description

|  |  |
|--|--|
| <b>Product name</b>                    | Native Human IgG2 protein  |
| <b>Biological activity</b>             | Shown to be non reactive for HBsAg, anti-HCV, anti-HBc, and negative for anti-HIV 1 and 2 by FDA approved tests. |
| <b>Purity</b>                          | > 95 % SDS-PAGE.   |
| <b>Expression system</b>               | Native   |
| <b>Protein length</b>                  | Full length protein  |
| <b>Animal free</b>                     | No   |
| <b>Nature</b>                          | Native   |
| <b>Species</b>                         | Human  |
| <b>Predicted molecular weight</b>      | 146 kDa  |
| <b>Additional sequence information</b> | Prepared from myeloma plasma.  |

### Specifications

Our **Abpromise guarantee** covers the use of **ab90284** in the following tested applications.

The application notes include recommended starting dilutions; optimal dilutions/concentrations should be determined by the end user.

|                         |   |
|-------------------------|---|
| <b>Applications</b>     | SDS-PAGE  |
| <b>Form</b>             | Liquid  |
| <b>Additional notes</b> | Extinction Coefficient (E) 0.1% at 280nm =1.36.<br>Shown to be non reactive for HBsAg, anti-HCV, anti-HBc, and negative for anti-HIV 1 and 2 by FDA approved tests. |

### Preparation and Storage

|                              |  |
|------------------------------|--|
| <b>Stability and Storage</b> | Shipped on Dry Ice. Upon delivery aliquot. Store at -80°C. Avoid freeze / thaw cycle.<br>pH: 7.40<br>Preservative: 0.05% Sodium azide<br>Constituents: 0.9% Sodium chloride, 0.3% Sodium phosphate monobasic, monohydrate, 98% Water |
|------------------------------|--|

## General Info

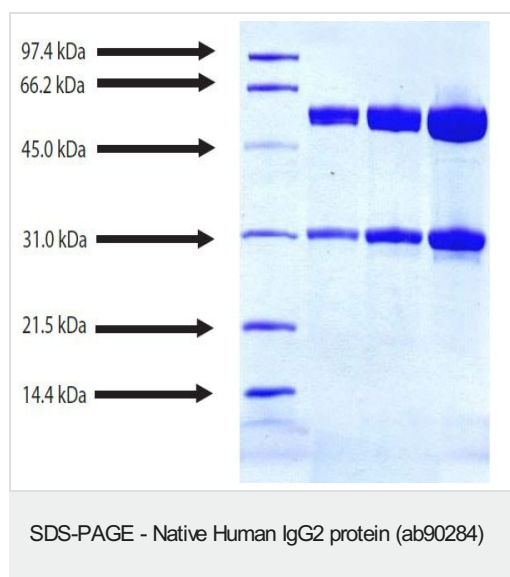
### Relevance

There are four IgG subclasses (IgG1, 2, 3 and 4) in humans, named in order of their abundance in serum (IgG1 being the most abundant). IgG2 is the only IgG subclass which passes through the placenta at a level generally lower than that found in the mother. A deficiency of IgG2 indicates a poor antibody response to bacterial polysaccharides and can lead to increased susceptibility to infections caused by encapsulated bacteria.

### Cellular localization

Secreted

## Images



SDS PAGE analysis ab90284 under reduced/heated conditions.

Lane 1: LMW Standard;

Lane 2: 5µg ab90284;

Lane 3 10µg ab90284;

Lane 4 20µg ab90284.

**Please note:** All products are "FOR RESEARCH USE ONLY. NOT FOR USE IN DIAGNOSTIC PROCEDURES"

## Our Abpromise to you: Quality guaranteed and expert technical support

- Replacement or refund for products not performing as stated on the datasheet
- Valid for 12 months from date of delivery
- Response to your inquiry within 24 hours
- We provide support in Chinese, English, French, German, Japanese and Spanish
- Extensive multi-media technical resources to help you
- We investigate all quality concerns to ensure our products perform to the highest standards

If the product does not perform as described on this datasheet, we will offer a refund or replacement. For full details of the Abpromise, please visit <https://www.abcam.com/abpromise> or contact our technical team.

## Terms and conditions

- Guarantee only valid for products bought direct from Abcam or one of our authorized distributors