

Product datasheet

Native human Plasmin protein (Active) ab90928

[2 References](#) [1 Image](#)

Description

Product name	Native human Plasmin protein (Active)
Biological activity	15 units/mg protein One unit is defined as the amount of enzyme that hydrolyzes one μ mole of tosyl-Gly-Pro-Lys-pNA per minute at 25°C, pH 7.8. Note: One unit = 1.25 CU.
Purity	>= 95 % SDS-PAGE.
Expression system	Native
Accession	<u>P00747</u>
Protein length	Full length protein
Animal free	No
Nature	Native
Species	Human
Predicted molecular weight	81 kDa

Specifications

Our **Abpromise guarantee** covers the use of **ab90928** in the following tested applications.

The application notes include recommended starting dilutions; optimal dilutions/concentrations should be determined by the end user.

Applications	Functional Studies SDS-PAGE
Form	Lyophilized
Additional notes	Prepared from plasma shown to be non reactive for HBsAg, anti-HCV, anti-HBc, and negative for anti-HIV 1 & 2 by FDA approved tests. Extinction Coefficient (E) 0.1% at 280nm 1cm pathway=1.71

Preparation and Storage

Stability and Storage	Shipped at 4°C. Store at -20°C. Information available upon request. This product is an active protein and may elicit a biological response in vivo, handle with caution.
------------------------------	--

Reconstitution

We recommend that this product be resuspended in de-ionized H₂O to the original volume.

General Info

Function

Plasmin dissolves the fibrin of blood clots and acts as a proteolytic factor in a variety of other processes including embryonic development, tissue remodeling, tumor invasion, and inflammation. In ovulation, weakens the walls of the Graafian follicle. It activates the urokinase-type plasminogen activator, collagenases and several complement zymogens, such as C1 and C5. Cleavage of fibronectin and laminin leads to cell detachment and apoptosis. Also cleaves fibrin, thrombospondin and von Willebrand factor. Its role in tissue remodeling and tumor invasion may be modulated by CSPG4. Binds to cells.

Angiostatin is an angiogenesis inhibitor that blocks neovascularization and growth of experimental primary and metastatic tumors in vivo.

Tissue specificity

Present in plasma and many other extracellular fluids. It is synthesized in the liver.

Involvement in disease

Plasminogen deficiency

Sequence similarities

Belongs to the peptidase S1 family. Plasminogen subfamily.

Contains 5 kringle domains.

Contains 1 PAN domain.

Contains 1 peptidase S1 domain.

Domain

Kringle domains mediate interaction with CSPG4.

Post-translational modifications

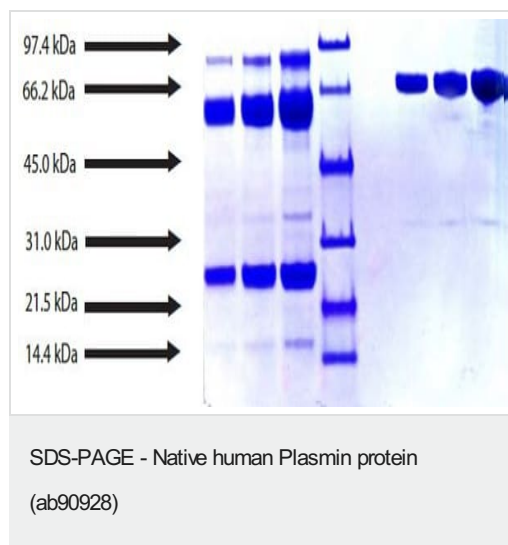
N-linked glycan contains N-acetylglucosamine and sialic acid. O-linked glycans consist of Gal-GalNAc disaccharide modified with up to 2 sialic acid residues (microheterogeneity).

In the presence of the inhibitor, the activation involves only cleavage after Arg-580, yielding two chains held together by two disulfide bonds. In the absence of the inhibitor, the activation involves additionally the removal of the activation peptide.

Cellular localization

Secreted. Locates to the cell surface where it is proteolytically cleaved to produce the active plasmin. Interaction with HRG tethers it to the cell surface.

Images



4-12% Bis-Tris NuPAGE gel.

Lane 1: Plasmin - 5 µg (reduced/ heated)

Lane 2: Plasmin - 10 µg (reduced/ heated)

Lane 3: Plasmin - 20 µg (reduced/ heated)

Lane 4: LMW Standard

Lane 5: Plasmin - 5 µg (non-reduced/ no heat)

Lane 6: Plasmin - 10 µg (non-reduced/ no heat)

Lane 7: Plasmin - 20 µg (non-reduced/ no heat)

Please note: All products are "FOR RESEARCH USE ONLY. NOT FOR USE IN DIAGNOSTIC PROCEDURES"

Our Abpromise to you: Quality guaranteed and expert technical support

- Replacement or refund for products not performing as stated on the datasheet
- Valid for 12 months from date of delivery
- Response to your inquiry within 24 hours

- We provide support in Chinese, English, French, German, Japanese and Spanish
- Extensive multi-media technical resources to help you
- We investigate all quality concerns to ensure our products perform to the highest standards

If the product does not perform as described on this datasheet, we will offer a refund or replacement. For full details of the Abpromise, please visit <https://www.abcam.com/abpromise> or contact our technical team.

Terms and conditions

- Guarantee only valid for products bought direct from Abcam or one of our authorized distributors