

Native Human Transferrin protein ab91435

2 Images

Description	
Product name	Native Human Transferrin protein
Purity	> 95 % SDS-PAGE. Sterile filtered using 0.2 micron filter. Endotoxin Level determined by LAL testing.
Endotoxin level	<=0.100 Eu/mg
Expression system	Native
Accession	<u>P02787</u>
Protein length	Full length protein
Animal free	No
Nature	Native
Species	Human
Sequence	VPDKTVRWCAVSEHEATKCQSFRDHMKSVIPSDGPSVA CVKKASYLDCIR AIAANEADAVTLDAGLVYDAYLAPNNLKPVVAEFYGSKED PQTFYYAVAV VKKDSGFQMNQLRGKKSCHTGLGRSAGWNIPIGLLYCDL PEPRKPLEKAV ANFFSGSCAPCADGTDFFPQLCQLCPGCGCSTLNQYFGY SGAFKCLKDGAG DVAFVKHSTIFENLANKADRDQYELLCLDNTRKPVDEYKD CHLAQVPSHT VVARSMGGKEDLIWELLNQAQEHFGKDKSKEFQLFSSPH GKDLLFKDSA H GFLKVPPRMDAKMYLGYEYVTAIRNLREGTCPEAPTDECK PVKWCALSHH ERLKCDEWSVNSVGKIECVSAETTEDCIAKIMNGEADAM SLDGGFVYIAG KCGLVPVLAENYNKSDNCEDTPEAGYFAIAVVKKASDLT WDNLKGKKSC HTAVGRTAGWNIPMGLLYNKINHCRFDEFFSEGCAPGSKK DSSLCKLCMG SGLNLCEPNNKEGYGYTGAFRCLVEKGDVAFVKHQVTP QNTGGKNPDPW AKNLNEKDYEELLCLDGTRKPVVEEYANCHLARAPNHAVVT RKDKEACVHKI

LRQQQHFLFGSNVTDCSGNFCFLRSETKDLLFRDDTVCLA
KLHDRNTYEKY
LGEEYVKAVGNLRKCSTSSLLEACTFRRP

Amino acids

20 to 698

Specifications

Our **Abpromise guarantee** covers the use of **ab91435** in the following tested applications.

The application notes include recommended starting dilutions; optimal dilutions/concentrations should be determined by the end user.

Applications	Western blot
	SDS-PAGE
Form	Lyophilized
Additional notes	Prepared from plasma shown to be non reactive for HBsAg, anti-HCV, anti-HBc, and negative for anti-HIV 1 & 2 by FDA approved tests.
	Iron Content: >= 1100 ug per gram.

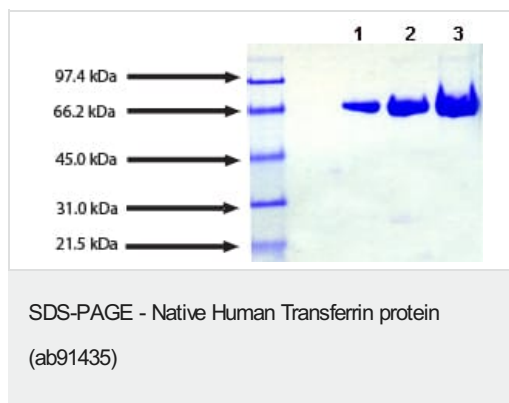
Preparation and Storage

Stability and Storage	Shipped at 4°C. Store at -20°C.
	pH: 7.40
	Constituents: 0.328% Sodium phosphate, 0.87% Sodium chloride

General Info

Function	Transferrins are iron binding transport proteins which can bind two Fe(3+) ions in association with the binding of an anion, usually bicarbonate. It is responsible for the transport of iron from sites of absorption and heme degradation to those of storage and utilization. Serum transferrin may also have a further role in stimulating cell proliferation.
Tissue specificity	Expressed by the liver and secreted in plasma.
Involvement in disease	Defects in TF are the cause of atransferrinemia (ATRAF) [MIM:209300]. Atransferrinemia is rare autosomal recessive disorder characterized by iron overload and hypochromic anemia.
Sequence similarities	Belongs to the transferrin family.
	Contains 2 transferrin-like domains.
Cellular localization	Secreted.

Images

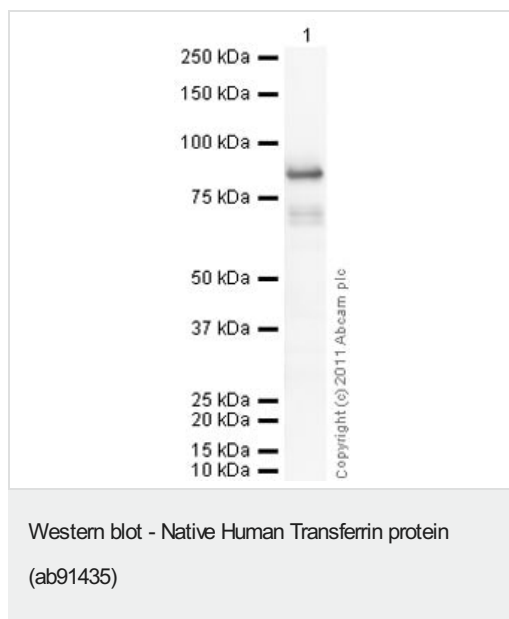


SDS-PAGE: 4-12% Bis-Tris gel

Lane 1. 5 µg Transferrin (non-reduced/ no heat)

Lane 2. 10 µg Transferrin (non-reduced/ no heat)

Lane 3. 20 µg Transferrin (non-reduced/ no heat)



Please note: All products are "FOR RESEARCH USE ONLY. NOT FOR USE IN DIAGNOSTIC PROCEDURES"

Our Abpromise to you: Quality guaranteed and expert technical support

- Replacement or refund for products not performing as stated on the datasheet
- Valid for 12 months from date of delivery
- Response to your inquiry within 24 hours
- We provide support in Chinese, English, French, German, Japanese and Spanish
- Extensive multi-media technical resources to help you
- We investigate all quality concerns to ensure our products perform to the highest standards

If the product does not perform as described on this datasheet, we will offer a refund or replacement. For full details of the Abpromise, please visit <https://www.abcam.com/abpromise> or contact our technical team.

Terms and conditions

- Guarantee only valid for products bought direct from Abcam or one of our authorized distributors