

## Product datasheet

# Native Mouse IgG protein ab198772

[9 References](#)   [1 Image](#)

### Description

<b>Product name</b>	Native Mouse IgG protein
<b>Purity</b>	> 95 % SDS-PAGE. Mouse plasma was obtained from healthy animals of US origin and under the care of a registered veterinarian.
<b>Expression system</b>	Native
<b>Accession</b>	<b><u>P01868</u></b>
<b>Protein length</b>	Full length protein
<b>Animal free</b>	No
<b>Nature</b>	Native
<b>Species</b>	Mouse
<b>Predicted molecular weight</b>	150 kDa
<b>Additional sequence information</b>	Prepared from mouse plasma.

### Specifications

Our **Abpromise guarantee** covers the use of **ab198772** in the following tested applications.

The application notes include recommended starting dilutions; optimal dilutions/concentrations should be determined by the end user.

<b>Applications</b>	SDS-PAGE
<b>Form</b>	Lyophilized

### Preparation and Storage

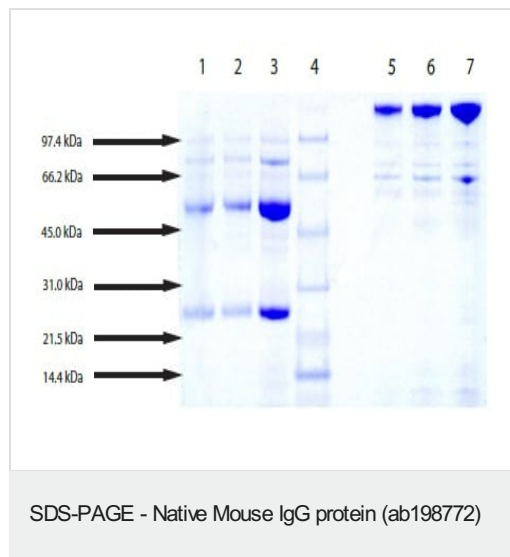
<b>Stability and Storage</b>	Shipped at 4°C. Store at -20°C or -80°C. Avoid freeze / thaw cycle. pH: 7.40 Preservative: 0.05% Sodium azide Constituents: 0.87% Sodium chloride, 0.24% Monobasic dihydrogen sodium phosphate
<b>Reconstitution</b>	To ensure complete recovery of product, please centrifuge prior to opening. Reconstitution: After initial centrifugation, we suggest the addition of de-ionized H2O to the original volume, followed by gentle swirling and/or vortexing to ensure adequate homogenization. If further dilution is required, please use the lyophilization buffer.

## General Info

### Cellular localization

Secreted

## Images



### SDS-PAGE

4-12% Bis-Tris NuPAGE gel

Lane 1. Mouse IgG - 5  $\mu$ g (reduced / heated)

Lane 2. Mouse IgG - 10  $\mu$ g (reduced / heated)

Lane 3. Mouse IgG - 20  $\mu$ g (reduced / heated)

Lane 4. LMW Standard

Lane 5. Mouse IgG - 5  $\mu$ g (non-reduced / no heat)

Lane 6. Mouse IgG - 10  $\mu$ g (non-reduced / no heat)

Lane 7. Mouse IgG - 20  $\mu$ g (non-reduced / no heat)

**Please note:** All products are "FOR RESEARCH USE ONLY. NOT FOR USE IN DIAGNOSTIC PROCEDURES"

## Our Abpromise to you: Quality guaranteed and expert technical support

- Replacement or refund for products not performing as stated on the datasheet
- Valid for 12 months from date of delivery
- Response to your inquiry within 24 hours
- We provide support in Chinese, English, French, German, Japanese and Spanish
- Extensive multi-media technical resources to help you
- We investigate all quality concerns to ensure our products perform to the highest standards

If the product does not perform as described on this datasheet, we will offer a refund or replacement. For full details of the Abpromise, please visit <https://www.abcam.com/abpromise> or contact our technical team.

## Terms and conditions

- Guarantee only valid for products bought direct from Abcam or one of our authorized distributors