

## Product datasheet

# Native rat Antithrombin III/ATIII protein ab93317

[1 Image](#)

### Description

<b>Product name</b>	Native rat Antithrombin III/ATIII protein
<b>Biological activity</b>	ab93317 is 98% active by Thrombin titration.
<b>Purity</b>	> 95 % SDS-PAGE. ab93317 is purified using several chromatographic steps and is > 98% pure by SDS-PAGE.
<b>Expression system</b>	Native
<b>Protein length</b>	Full length protein
<b>Animal free</b>	No
<b>Nature</b>	Native
<b>Species</b>	Rat

### Specifications

Our **Abpromise guarantee** covers the use of **ab93317** in the following tested applications.

The application notes include recommended starting dilutions; optimal dilutions/concentrations should be determined by the end user.

<b>Applications</b>	SDS-PAGE
<b>Form</b>	Liquid
<b>Additional notes</b>	Solubility: > 5 mg/mL Spectrophotometric Data: Ultraviolet: Absorbance (280nm) = 0.52 epsilon <sup>0.1%</sup> = 0.65 Concentration = 0.8 mg/mL Previously labelled as Antithrombin III.

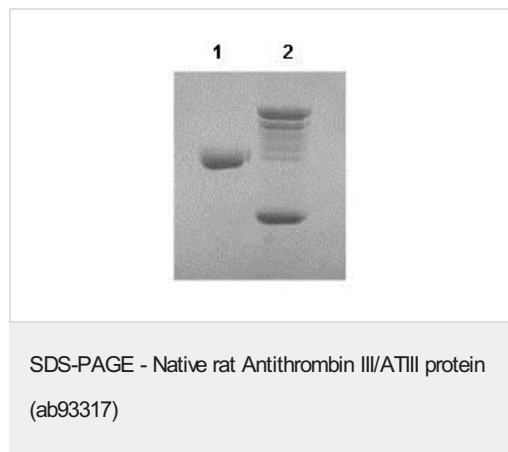
### Preparation and Storage

<b>Stability and Storage</b>	Shipped on dry ice. Upon delivery aliquot and store at -80°C. Avoid freeze / thaw cycles. pH: 7.40 Constituents: 0.82% Sodium phosphate, 0.0292% EDTA, 0.58% Sodium chloride This product is an active protein and may elicit a biological response in vivo, handle with caution.
------------------------------	--

### General Info

<b>Function</b>	Most important serine protease inhibitor in plasma that regulates the blood coagulation cascade. AT-III inhibits thrombin as well as factors IXa, Xa and XIa. Its inhibitory activity is greatly enhanced in the presence of heparin.
<b>Tissue specificity</b>	Found in plasma.
<b>Involvement in disease</b>	Defects in SERPINC1 are the cause of antithrombin III deficiency (AT3D) [MIM:613118]. AT3D is an important risk factor for hereditary thrombophilia, a hemostatic disorder characterized by a tendency to recurrent thrombosis. AT3D is classified into 4 types. Type I: characterized by a 50% decrease in antigenic and functional levels. Type II: has defects affecting the thrombin-binding domain. Type III: alteration of the heparin-binding domain. Plasma AT-III antigen levels are normal in type II and III. Type IV: consists of miscellaneous group of unclassifiable mutations.
<b>Sequence similarities</b>	Belongs to the serpin family.
<b>Post-translational modifications</b>	Phosphorylation sites are present in the extracellular medium.
<b>Cellular localization</b>	Secreted > extracellular space.

## Images



SDS-PAGE showing ab93317 at 58 kDa.

Lane 1: Antithrombin III/ATIII protein

Lane 2: Antithrombin III/ATIII protein + 3X Molar excess Thrombin

**Please note:** All products are "FOR RESEARCH USE ONLY. NOT FOR USE IN DIAGNOSTIC PROCEDURES"

## Our Abpromise to you: Quality guaranteed and expert technical support

- Replacement or refund for products not performing as stated on the datasheet
- Valid for 12 months from date of delivery
- Response to your inquiry within 24 hours
- We provide support in Chinese, English, French, German, Japanese and Spanish
- Extensive multi-media technical resources to help you
- We investigate all quality concerns to ensure our products perform to the highest standards

If the product does not perform as described on this datasheet, we will offer a refund or replacement. For full details of the Abpromise, please visit <https://www.abcam.com/abpromise> or contact our technical team.

## **Terms and conditions**

---

- Guarantee only valid for products bought direct from Abcam or one of our authorized distributors