

Product datasheet

Recombinant Chicken EN1 / Engrailed 1 protein (Tagged) ab226404

[1 Image](#)

Description

Product name	Recombinant Chicken EN1 / Engrailed 1 protein (Tagged)
Purity	> 90 % SDS-PAGE.
Expression system	Escherichia coli
Accession	<u>Q05916</u>
Protein length	Full length protein
Animal free	No
Nature	Recombinant
Species	Chicken
Sequence	MEEPPEGHGHRDAAPPGPANGGGGGGGSDGDSAPV SPSPAPASPAAPC PLPLPRRRPPPPPPRRTTNFFIDNLRPDFGCKKEPPAATG AATGAGGGG GGGGREQRDGAQSAGRENVNPLLARPPHAPSSALLCPD SNCAPDGSAPAG TAAKANPGTAAGAAGAAGAAKAQGDGGETPAAKYGEHG SPAILLMGSNNG GAVLKPDSQQPLVWPAWVYCTRYSDRPPSSPRTRKLLKKK KTEKEDKRPRTA FTAEQLQRLKAEFQANRYTEQRRQSLAQELSLNESRVKI WFQNKRAKIK KATGIKNGLALHLMAQGLYNHSTTTVQDKEESE
Predicted molecular weight	49 kDa including tags
Amino acids	1 to 333
Tags	His tag N-Terminus
Additional sequence information	6xHis-B2M tag at the N-terminus.

Specifications

Our **Abpromise guarantee** covers the use of **ab226404** in the following tested applications.

The application notes include recommended starting dilutions; optimal dilutions/concentrations should be determined by the end user.

Applications SDS-PAGE

Form Liquid

Preparation and Storage

Stability and Storage

Shipped at 4°C. Store at +4°C short term (1-2 weeks). Upon delivery aliquot. Store at -20°C or -80°C. Avoid freeze / thaw cycle.

pH: 7.2

Constituents: 50% Glycerol (glycerin, glycerine), Tris buffer

General Info

Sequence similarities

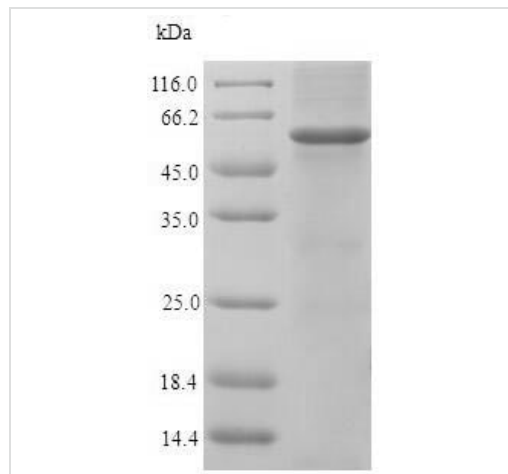
Belongs to the engrailed homeobox family.

Contains 1 homeobox DNA-binding domain.

Cellular localization

Nucleus.

Images



(Tris-Glycine gel) Discontinuous SDS-PAGE (reduced) analysis of ab226404 with 5% enrichment gel and 15% separation gel.

SDS-PAGE - Recombinant Chicken EN1 / Engrailed
1 protein (Tagged) (ab226404)

Please note: All products are "FOR RESEARCH USE ONLY. NOT FOR USE IN DIAGNOSTIC PROCEDURES"

Our Abpromise to you: Quality guaranteed and expert technical support

- Replacement or refund for products not performing as stated on the datasheet
- Valid for 12 months from date of delivery
- Response to your inquiry within 24 hours
- We provide support in Chinese, English, French, German, Japanese and Spanish
- Extensive multi-media technical resources to help you

- We investigate all quality concerns to ensure our products perform to the highest standards

If the product does not perform as described on this datasheet, we will offer a refund or replacement. For full details of the Abpromise, please visit <https://www.abcam.com/abpromise> or contact our technical team.

Terms and conditions

- Guarantee only valid for products bought direct from Abcam or one of our authorized distributors