

Product datasheet

Recombinant cynomolgus monkey Glypican 3 protein (Fc Chimera Active) ab220548

[5 Images](#)

Description

Product name	Recombinant cynomolgus monkey Glypican 3 protein (Fc Chimera Active)
Biological activity	Measured by its binding ability in a functional ELISA. Immobilized Human FGF basic, Tag Free at 2 µg/ml (100 µl/well) can bind ab220548 with a linear range of 4.8-19.5 ng/ml.
Purity	90 % SDS-PAGE. Purity 90% Glypican 3 and 2-8% human IgG1 Fc fragment as determined by SDS-PAGE.
Endotoxin level	< 1.000 Eu/µg
Expression system	HEK 293 cells
Accession	<u>XP_005594665</u>
Protein length	Protein fragment
Animal free	No
Nature	Recombinant
Species	Cynomolgus monkey

Sequence

QPPPPPPDATCHQVRSFFQRLQPGLKWVPETPVPGSDL
 QVCLPKGPTCCS
 RKMEEKYQLTARLNMEQLLQSASMEKFLIIQNAAVFQEA
 FEIVRHAKN
 YTNAMFKNNYPSLTPQAFEFVGEFFTDVSLYLGSDINVDD
 MVNELFDSL
 FPVIYQLMNPGLPDSALDINECLRGARRDLKVFGNFPKLI
 MTQVSKSLQ
 VTRIFLQALNLGIEVINTTDHLKFSKDCGRMLTRMWYCSYC
 QGLMMVKPC
 GGYCNVVMQGC MAGVVEIDKYWREYLSLEELVNGMYRIY
 DMENVLLGLF
 STIHDSIQYVQKNAGKLTITIGKLC AHSQQRQYRSAYYPED
 LFIDKKVLK
 VAHVEHEETLSSRRRELIQKLKSFISFYALPGYICSHSPVA
 ENDTLCWN
 GQELVERYSQKAARNGMKNQFNLHELKMKGPEPVVSQII
 DKLKHINQLLR
 TMSVPKGRVLDKNLDEEGFESGDCGDDDEDECIGGSGDG
 MMKVKNQLRFLA

Predicted molecular weight	88 kDa including tags
Amino acids	25 to 559
Additional sequence information	Fused with a human IgG1 Fc tag (Pro 100 - Lys 330; UniProt P01857) at the C-terminus.

Specifications

Our **Abpromise guarantee** covers the use of **ab220548** in the following tested applications.

The application notes include recommended starting dilutions; optimal dilutions/concentrations should be determined by the end user.

Applications	SDS-PAGE Functional Studies
Form	Lyophilized

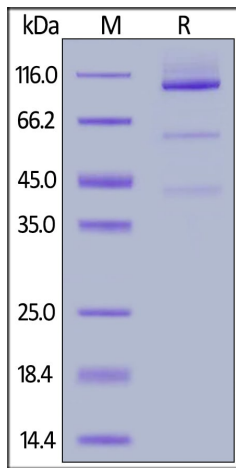
Preparation and Storage

Stability and Storage	Shipped at 4°C. Store at -20°C or -80°C. Avoid freeze / thaw cycle. pH: 7.4 Constituents: 0.61% Tris, 0.75% Glycine, 5% Trehalose Lyophilized from 0.22 µm filtered solution. This product is an active protein and may elicit a biological response in vivo, handle with caution.
Reconstitution	Reconstitute with sterile deionized water to a concentration of 200 µg/ml.

General Info

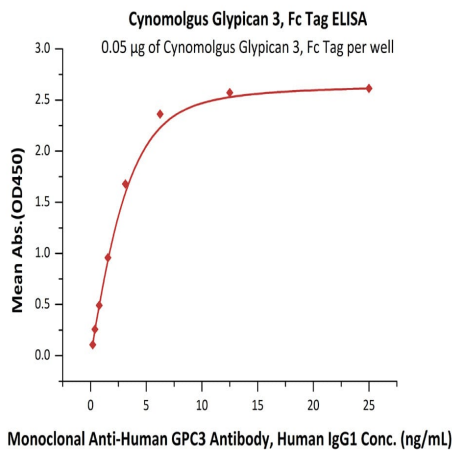
Function	Cell surface proteoglycan that bears heparan sulfate. Inhibits the dipeptidyl peptidase activity of DPP4. May be involved in the suppression/modulation of growth in the predominantly mesodermal tissues and organs. May play a role in the modulation of IGF2 interactions with its receptor and thereby modulate its function. May regulate growth and tumor predisposition.
Tissue specificity	Highly expressed in lung, liver and kidney.
Involvement in disease	Defects in GPC3 are the cause of Simpson-Golabi-Behmel syndrome type 1 (SGBS1) [MIM:312870]; also known as Simpson dysmorphia syndrome (SDYS). SGBS is a condition characterized by pre- and postnatal overgrowth (gigantism) with visceral and skeletal anomalies.
Sequence similarities	Belongs to the glypican family.
Cellular localization	Cell membrane and Secreted > extracellular space.

Images



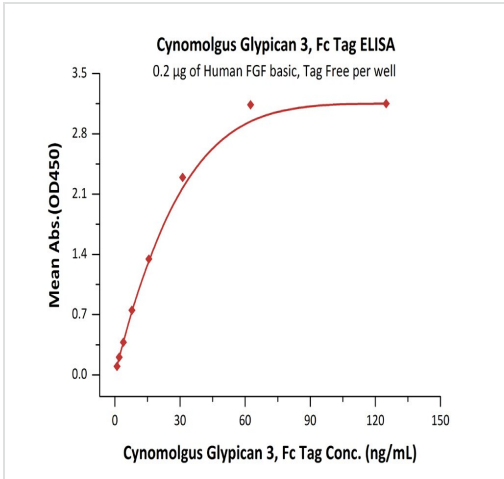
SDS-PAGE - Recombinant cynomolgus monkey Glypican 3 protein (Fc Chimera Active) (ab220548)

Cynomolgus Glypican 3, Fc Tag on SDS-PAGE under reducing (R) condition. The gel was stained overnight with Coomassie Blue. The purity of the protein is greater than 90%.



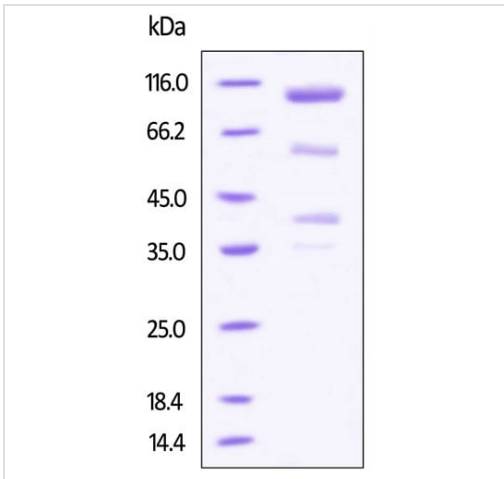
Functional Studies - Recombinant cynomolgus monkey Glypican 3 protein (Fc Chimera Active) (ab220548)

Immobilized Cynomolgus Glypican 3, Fc Tag at 0.5 µg/mL (100 µL/well) can bind Monoclonal Anti-Human GPC3 Antibody, Human IgG1 with a linear range of 0.2-3 ng/mL.



Immobilized Human FGF basic, Tag Free at 2 µg/mL (100 µL/well) can bind Cynomolgus Glypican 3, Fc Tag with a linear range of 1-31 ng/mL.

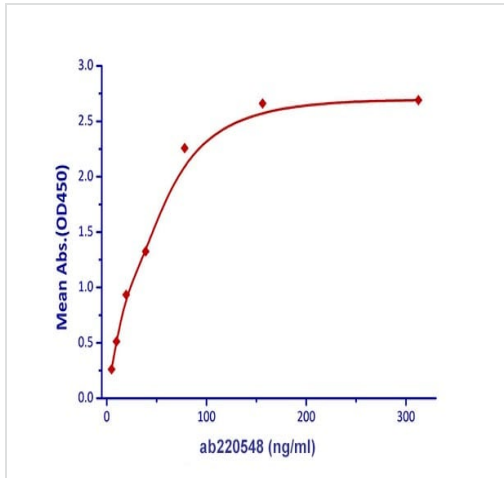
Functional Studies - Recombinant cynomolgus monkey Glypican 3 protein (Fc Chimera Active) (ab220548)



SDS-PAGE analysis of ab220548 stained overnight with Coomassie Blue.

The protein migrates as 100 kDa, 58 kDa, 40 kDa on a SDS-PAGE gel under reducing conditions due to glycosylation.

SDS-PAGE - Recombinant cynomolgus monkey Glypican 3 protein (Fc Chimera Active) (ab220548)



Immobilized Human FGF basic, Tag Free at 2 µg/ml (100 µl/well) can bind ab220548 with a linear range of 4.8-19.5 ng/ml.

Functional Studies - Recombinant cynomolgus monkey Glypican 3 protein (Fc Chimera Active) (ab220548)

Please note: All products are "FOR RESEARCH USE ONLY. NOT FOR USE IN DIAGNOSTIC PROCEDURES"

Our Abpromise to you: Quality guaranteed and expert technical support

- Replacement or refund for products not performing as stated on the datasheet
- Valid for 12 months from date of delivery
- Response to your inquiry within 24 hours
- We provide support in Chinese, English, French, German, Japanese and Spanish
- Extensive multi-media technical resources to help you
- We investigate all quality concerns to ensure our products perform to the highest standards

If the product does not perform as described on this datasheet, we will offer a refund or replacement. For full details of the Abpromise, please visit <https://www.abcam.com/abpromise> or contact our technical team.

Terms and conditions

- Guarantee only valid for products bought direct from Abcam or one of our authorized distributors