

Recombinant dog PDE4D protein ab198425

2 Images

Description	
Product name	Recombinant dog PDE4D protein
Biological activity	<p>Specific Activity: ≥ 5665 pmol/min/μg</p> <p>Unit Definition: One unit is defined as the amount of ab198425 that will convert 1 pmole of 3, 5-cAMP to 5-AMP per minute at 37°C.</p> <p>Assay Conditions: 10 mM Tris-HCl, pH 7.4, 10 mM MgCl₂, 0.1 mg/ml BSA, 0.05% Tween-20, 200μM cAMP, 2.5 kU 5'-nucleotidase, and serial dilutions of ab198425 at 37°C for 20 min.</p> <p>Quantified by 5'- nucleotidase cleaving the 5' -AMP product and releasing the phosphate group which is detected by Malachite Green Reagent.</p>
Purity	<p>> 90 % SDS-PAGE.</p> <p>Affinity purified.</p>
Expression system	Baculovirus infected Sf9 cells
Accession	<u>XP_003433853</u>
Protein length	Full length protein
Animal free	No
Nature	Recombinant
Species	Dog
Sequence	<p>MSPILGYWKIKGLVQPTRLLEYLEEKYEEHLYERDEGDK WRNKKFELGL EFPNLPYYIDGDVKLTQSMARIYADKHNMMLGGCPKERAEI SMLEGAVL DIRYGVSRIAYSKDFETLKVDFLSKLPEMLKMFKDRLCHKT YLNGDHVTH PDFMLYDALDVVLYMDPMCLDAFPKLVCFKKRIEAIQIDK YKSSKYIA WPLQGWQATFGGGDHLVPRGSGSGIQSIIMKPRSRSTSS LRTTEAACFDV DNGTSAGRSPDPMTSPGSLILQANFVHSQRRESFLYR SDSDYDLSPKS MSRNSSIASDIHGDDLIVTPFAQVLASLRTVRNNFAALTNL QDRAPSKRS PMCQNQPSINKATITEEAYQKLASETLEELDWCLDQLETLQT RHSVSEMAS NKFKRMLNRELTHLSEMSRSGNQVSEYISNTFLDKQHEVE IPSPTQKEKE</p>

KKKRPMSQISGVKKLMHSSSLTNSSIPRFGVKTEQEDVLA
 KELEDVNKWG
 LHVFRIAELSGNRPLTVIMHTIFQERDLLKTFKIPVDLTILITYLM
 TLEDHY
 HADVAYHNNIHAADVQSTHVLLSTPALEAVFTDLEILAAIF
 ASAIHDVD
 HPGVSNQFLINTNSELALMYNDSSVLENHHLAVGFKLLQE
 ENCDIFQNL
 KKQRQSLRKMVIDIVLATDMSKHMNLLADLKTMTVETKKVT
 SSGVLLLDNY
 SDRIQVLQNMVHCADLSNPTKPLQLYRQWTDRIEEDFRQ
 GDRERERGME
 ISPMCDKHNASVEKSQVGFIDYVHPLWETWADLVHPDAQ
 DILDTLEDNR
 EWYQSTIPQSPAPDEQEEGRQGQTEKFQFELTLEEDG
 ESDTEKDSGSQ
 VEEDTSCSDSKTLCTQDSESTEIPLDEQVEEETVGEEN
 SQPEACVIEDH SPDT

Predicted molecular weight	104 kDa including tags
Amino acids	2 to 679
Tags	GST tag N-Terminus
Description	Recombinant dog PDE4B protein

Specifications

Our **Abpromise guarantee** covers the use of **ab198425** in the following tested applications.

The application notes include recommended starting dilutions; optimal dilutions/concentrations should be determined by the end user.

Applications	SDS-PAGE Functional Studies
Form	Liquid

Preparation and Storage

Stability and Storage	<p>Shipped on Dry Ice. Store at -80°C. Avoid freeze / thaw cycle.</p> <p>pH: 8.00</p> <p>Constituents: 20% Glycerol (glycerin, glycerine), 0.63% Tris HCl, 0.64% Sodium chloride, 0.02% Potassium chloride, 0.05% (R*,R*)-1,4-Dimercaptobutan-2,3-diol</p> <p>This product is an active protein and may elicit a biological response in vivo, handle with caution.</p>
------------------------------	------------------------------------------------------------------------------------------------------------------------------------------------------------------------------------------------------------------------------------------------------------------------------------------------------------------------------------------------------------------------

General Info

Function	Hydrolyzes the second messenger cAMP, which is a key regulator of many important physiological processes. May be involved in mediating central nervous system effects of therapeutic agents ranging from antidepressants to antiasthmatic and anti-inflammatory agents.
Tissue specificity	Expressed in brain, heart, lung and skeletal muscle.

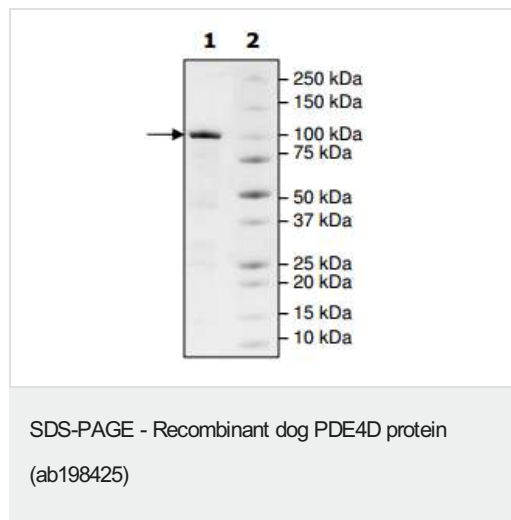
Pathway

Purine metabolism; 3',5'-cyclic AMP degradation; AMP from 3',5'-cyclic AMP: step 1/1.

Sequence similarities

Belongs to the cyclic nucleotide phosphodiesterase family. PDE4 subfamily.

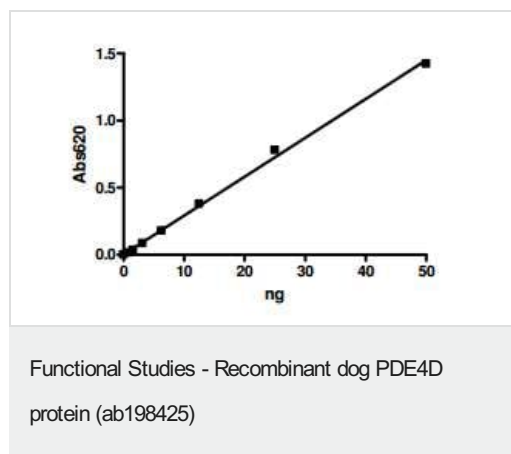
Images



4-20% SDS-PAGE analysis of ab198425 with Coomassie staining.

Lane 1: 2 µg ab198425

Lane 2: Protein Marker



Specific activity of ab198425.

Please note: All products are "FOR RESEARCH USE ONLY. NOT FOR USE IN DIAGNOSTIC PROCEDURES"

Our Abpromise to you: Quality guaranteed and expert technical support

- Replacement or refund for products not performing as stated on the datasheet
- Valid for 12 months from date of delivery
- Response to your inquiry within 24 hours
- We provide support in Chinese, English, French, German, Japanese and Spanish
- Extensive multi-media technical resources to help you
- We investigate all quality concerns to ensure our products perform to the highest standards

If the product does not perform as described on this datasheet, we will offer a refund or replacement. For full details of the Abpromise, please visit <https://www.abcam.com/abpromise> or contact our technical team.

Terms and conditions

- Guarantee only valid for products bought direct from Abcam or one of our authorized distributors