

Product datasheet

Recombinant *E. coli* Outer membrane protein C (Tagged) ab225590

[3 Images](#)

Description

Product name	Recombinant <i>E. coli</i> Outer membrane protein C (Tagged)	
Purity	> 90 % SDS-PAGE.	
Expression system	Escherichia coli	
Accession	<u>P06996</u>	
Protein length	Full length protein	
Animal free	No	
Nature	Recombinant	
Species	Escherichia coli	
Sequence	AEVYNKDGKLDLYGKVDGLHYFSDNKDVDGDQTYMRLG FKGETQVTDQL TGYGQWEYQIQGNSAENENNSWTRVAFAGLKFQDVGSF DYGRNYGVVYDV TSWTDVLPEFGGDTYGSDFMQRGNGFATYRNTDFFGL VDGLNFAVQYQ GKNGNPSGEGFTSGVTNNGRDALRQNGDGVGGSITYDYE GFGGGAISSS KRTDAQNTAA YINGDRAETYTGGLKYDANNI LAAQYTQT YNATRVGSL GWANKAQNFEAVAQYQDFGLRPSLAYLQSKGKNLGRG YDDEDILKYVDV GATYYFNKNMSTYVDYKINLLDDNQFTRDAGINTDNIVALGL VYQF	
Predicted molecular weight	54 kDa including tags	
Amino acids	22 to 367	
Tags	His tag N-Terminus	
Additional sequence information	This product is the full-length mature protein with a 6xHis-SUMO tag at the N-terminus. The signal peptide is missing. <i>Escherichia coli</i> (strain K12)	
Description	Recombinant <i>E. coli</i> Outer membrane protein C (Tagged)	

Specifications

Specifications

Our **Abpromise guarantee** covers the use of **ab225590** in the following tested applications.

The application notes include recommended starting dilutions; optimal dilutions/concentrations should be determined by the end user.

Applications	Mass Spectrometry SDS-PAGE
Mass spectrometry	LC-MS/MS
Form	Liquid

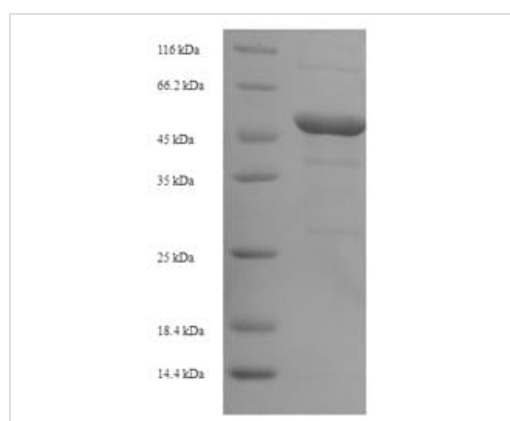
Preparation and Storage

Stability and Storage	Shipped at 4°C. Upon delivery aliquot. Store at -20°C or -80°C. Avoid freeze / thaw cycle. pH: 7.2 Constituents: 50% Glycerol (glycerin, glycerine), Tris buffer
------------------------------	--

General Info

Function	Forms pores that allow passive diffusion of small molecules across the outer membrane.
Sequence similarities	Belongs to the Gram-negative porin family.
Domain	Loop L3 (residues 116-133) extends along the inner side of the beta barrel wall and may constrict the pore mid-length.
Cellular localization	Cell outer membrane.

Images



SDS-PAGE - Recombinant *E. coli* Outer membrane protein C (Tagged) (ab225590)

Discontinuous SDS-PAGE (Tris-Glycine gel) (reduced) with 5% enrichment gel and 15% separation gel.

- Guarantee only valid for products bought direct from Abcam or one of our authorized distributors